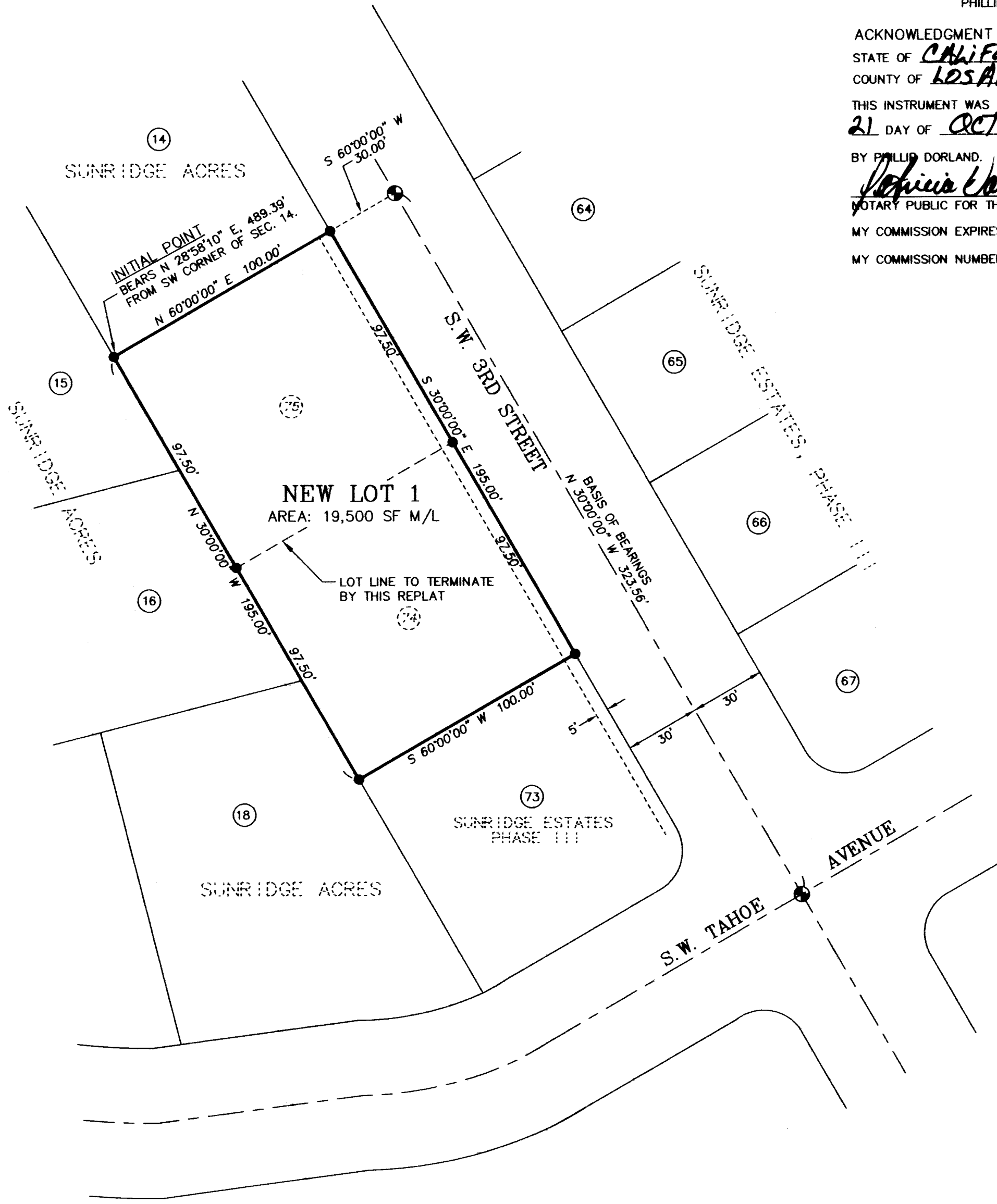


DORLAND REPLAT

A REPLAT OF LOTS 74 AND 75, SUNRIDGE ESTATES PHASE III, AN ADDITION TO PENDLETON, OREGON. LOCATED IN THE SW 1/4 OF SECTION 14, TOWNSHIP 2 NORTH, RANGE 32 EAST, W.M. UMATILLA COUNTY, OREGON
SEPTEMBER, 2015



SCALE: 1 INCH=40 FEET
0 20 40 80



OWNERS DECLARATION

WE, PHILLIP DORLAND AND ESTHER DORLAND, TRUSTEES OF PHILLIP AND ESTHER DORLAND 2010 TRUST, OWNERS OF LOTS 74 AND 75 OF SUNRIDGE ESTATES, PHASE III, DO HEREBY ESTABLISH AND ACKNOWLEDGE THIS REPLAT AS THE OFFICIAL MAP AND PLAT OF "DORLAND REPLAT", A REPLAT OF LOTS LOTS 74 AND 75, SUNRIDGE ESTATES, PHASE III, CITY OF PENDLETON, UMATILLA COUNTY, OREGON, PREPARED IN ACCORDANCE WITH THE PROVISIONS OF ORS CHAPTER 92, AS REVISED, AND THE CITY OF PENDLETON AND UMATILLA COUNTY DEVELOPMENT ORDINANCES.

Phillip Dorland Trustee *Esther Dorland Trustee*
PHILLIP DORLAND, TRUSTEE ESTHER DORLAND, TRUSTEE

ACKNOWLEDGMENT

STATE OF CALIFORNIA
COUNTY OF LOS ANGELES SS

THIS INSTRUMENT WAS ACKNOWLEDGED BEFORE ME THIS 21 DAY OF OCTOBER, 2015

BY PHILLIP DORLAND.
Patricia Valle
NOTARY PUBLIC FOR THE STATE OF CALIFORNIA
MY COMMISSION EXPIRES: NOVEMBER 29-2016
MY COMMISSION NUMBER: 1999421

ACKNOWLEDGMENT

STATE OF CALIFORNIA
COUNTY OF LOS ANGELES SS

THIS INSTRUMENT WAS ACKNOWLEDGED BEFORE ME THIS 21 DAY OF OCTOBER, 2015

BY ESTHER DORLAND.
Patricia Valle
NOTARY PUBLIC FOR THE STATE OF CALIFORNIA
MY COMMISSION EXPIRES: NOVEMBER 29-2016
MY COMMISSION NUMBER: 1999421

APPROVALS

CITY OF PENDLETON
CITY OF PENDLETON PLANNING COMMISSION

THE ACCOMPANYING REPLAT IS HEREBY APPROVED THIS

9 DAY OF November, 2015.

Auto Kain
CHAIRPERSON *W. Hall*
CITY PLANNER

CITY SURVEYOR

THE ACCOMPANYING REPLAT IS HEREBY APPROVED THIS

12 DAY OF November, 2015.

[Signature]
CITY OF PENDLETON SURVEYOR

UMATILLA COUNTY
UMATILLA COUNTY SURVEYOR

I CERTIFY I HAVE EXAMINED THE ACCOMPANYING PLAT, THAT IT COMPLIES WITH THE LAWS OF THE STATE OF OREGON WITH REFERENCE TO THE FILING AND RECORDING OF SUCH PLATS, AND I THEREFORE APPROVE SAID PLAT FOR SIGNATURE BY THE COUNTY COMMISSIONERS OF UMATILLA COUNTY, OREGON.

DATED THIS 16 DAY OF November, 2015.

David H. Kline
UMATILLA COUNTY SURVEYOR

UMATILLA COUNTY COMMISSIONERS

THE ACCOMPANYING REPLAT IS APPROVED FOR FILING AND RECORDING IN THE RECORD OF PLATS OF UMATILLA COUNTY BY THE UNDERSIGNED, BY IT'S ORDER.

DATED THIS 23 DAY OF Nov., 2015.

Greg M. Mink *William E. Johnson*
CHAIRMAN COMMISSIONER
Absent
COMMISSIONER

ASSESSOR AND TAX COLLECTOR

WE, THE ASSESSOR AND THE TAX COLLECTOR OF UMATILLA COUNTY, OREGON, DO HEREBY CERTIFY THAT WE HAVE EXAMINED THE TAX RECORDS RELATIVE TO THE LAND COVERED BY THE ACCOMPANYING REPLAT AND THAT ALL AD VALOREM TAXES AND SPECIAL ASSESSMENTS DUE PURSUANT TO LAW HAVE BEEN ASSESSED AND COLLECTED.

DATED THIS 16 DAY OF November, 2015.

Paul Chalmers *Bettina Engle*
COUNTY ASSESSOR COUNTY TAX COLLECTOR
Bettina Engle County Assessor

SURVEYORS CERTIFICATE & NARRATIVE

I, WILLIAM R. WELLS, A PROFESSIONAL LAND SURVEYOR IN THE STATE OF OREGON, DO HEREBY CERTIFY THAT I HAVE CORRECTLY SURVEYED AND RECOVERED OR MARKED WITH LEGAL MONUMENTS, IN ACCORDANCE WITH O.R.S. CHAPTER 92 AS REVISED, AND THE CITY OF PENDLETON AND UMATILLA COUNTY DEVELOPMENT ORDINANCES, THE LANDS SHOWN ON THE ACCOMPANYING DORLAND REPLAT.

THE SURVEY WAS MADE FROM CONTROLLING MONUMENTS RECOVERED AND DEPICTED ON SUNRIDGE ESTATES III, AN ADDITION TO THE CITY OF PENDLETON, RECORDED AT BOOK 15, PAGE 9, UMATILLA COUNTY PLAT RECORDS.

THE SURVEY WAS MADE BY A 2 PERSON CREW WITH A TRIMBLE GEODETIC GPS RECEIVER. ALL REQUIRED BOUNDARY CORNERS WERE RECOVERED.

REAL PROPERTY DESCRIPTION:

LOTS 74 AND 75, SUNRIDGE ESTATES, PHASE III, AN ADDITION TO THE CITY OF PENDLETON, UMATILLA COUNTY, OREGON RECORDED MAY 25TH, 2006 IN RECORD OF PLATS BOOK 15, PAGE 9, AS INSTRUMENT NO. 2006-5010315, UMATILLA COUNTY OFFICE OF RECORDS.

REGISTERED PROFESSIONAL LAND SURVEYOR

Will R. Wells
WILLIAM R. WELLS, PLS

Will R. Wells
OREGON
JULY 22, 1977
WILLIAM R. WELLS
1106
RENEWS 6/30/16

LEGEND

- - FOUND 5/8" REBAR WITH 1 1/4" RED PLASTIC CAP MARKED "OR PLS 1106, WA PLS 17372", FROM SUNRIDGE ESTATES PHASE III.
- ⊙ - FOUND 2" ALUMINUM CAP ON 5/8" REBAR AT STREET SURFACE SET ON SUNRIDGE ESTATES, PHASE III PLAT.
- ⑭ - INDICATES EXISTING LOT NUMBERS FROM SUNRIDGE ESTATES PHASE III OR SUNRIDGE ACRES.
- ⑭ - INDICATES LOT NUMBER TO TERMINATE BY THIS REPLAT.
- - INDICATES EXISTING PUBLIC UTILITY EASEMENT LINE.

DIMENSIONS REPORTED ON THIS PLAT, WHICH ARE COMMON WITH THOSE OF SUNRIDGE ESTATES, PHASE III, ARE IDENTICAL.

I CERTIFY THIS IS AN EXACT COPY OF THE DORLAND REPLAT.

Will R. Wells
WILLIAM R. WELLS, PLS

RECEIVED BY
Umatilla County Surveyor
Date: 11/30/15
Rec'd By: G. Nensley
No.: 15-118-B

WELLS SURVEYING
200 SE HAILEY SUITE 108
P.O. BOX 1696
PENDLETON, OR 97801
PHONE: (541) 276-6362

DATE: 6/15 DR. BY: DMT
CK. BY: WRW NO: 15-1550

RECORDING INFORMATION, UMATILLA COUNTY OFFICE OF RECORDS:

STATE OF OREGON, COUNTY OF UMATILLA } SS
I certify that this instrument was received and recorded
ON November 24, 2015
at 11:21:41 o'clock Am., in the record of PLATS of said County.
BOOK PAGE Slide
16 17

OFFICE OF COUNTY RECORDS

By: ...David A Stuvland...Records Officer

Fees \$ 78.00 No. 2015-6370062

PROJECT: \DORLANDREPLAT\FINAL

DORLAND REPLAT

LOCATED IN THE SW 1/4 OF SECTION 14, TOWNSHIP 2 NORTH, RANGE 32 EAST, W.M. CITY OF PENDLETON, UMATILLA COUNTY, OREGON.