

APPROVALS
CITY OF PENDLETON

CITY OF PENDLETON PLANNING COMMISSION

THE ACCOMPANYING REPLAT IS HEREBY APPROVED THIS

4 DAY OF September 2014.

[Signature]
CHAIRPERSON CITY PLANNER

CITY SURVEYOR

THE ACCOMPANYING REPLAT IS HEREBY APPROVED THIS

9 DAY OF September 2014.

[Signature]
CITY OF PENDLETON SURVEYOR

UMATILLA COUNTY
UMATILLA COUNTY SURVEYOR

I CERTIFY I HAVE EXAMINED THE ACCOMPANYING PLAT, THAT IT COMPLIES WITH THE LAWS OF THE STATE OF OREGON WITH REFERENCE TO THE FILING AND RECORDING OF SUCH PLATS, AND I THEREFORE APPROVE SAID PLAT FOR SIGNATURE BY THE COUNTY COMMISSIONERS OF UMATILLA COUNTY, OREGON.

DATED THIS 9 DAY OF September 2014.

[Signature]
UMATILLA COUNTY SURVEYOR

UMATILLA COUNTY COMMISSIONERS

THE ACCOMPANYING REPLAT IS APPROVED FOR FILING AND RECORDING IN THE RECORD OF PLATS OF UMATILLA COUNTY BY THE UNDERSIGNED, BY IT'S ORDER.

DATED THIS 11 DAY OF Sept. 2014.

[Signature]
CHAIRMAN
[Signature]
COMMISSIONER
[Signature]
COMMISSIONER

ASSESSOR AND TAX COLLECTOR

WE, THE ASSESSOR AND THE TAX COLLECTOR OF UMATILLA COUNTY, OREGON, DO HEREBY CERTIFY THAT WE HAVE EXAMINED THE TAX RECORDS RELATIVE TO THE LAND COVERED BY THE ACCOMPANYING REPLAT AND THAT ALL AD/VALOREM AND SPECIAL ASSESSMENTS DUE PURSUANT TO LAW HAVE BEEN ASSESSED AND COLLECTED.

DATED THIS 8 DAY OF September 2014.

[Signature]
COUNTY ASSESSOR
[Signature]
COUNTY TAX COLLECTOR

OWNERS DECLARATION

TENTH STREET INVESTMENTS INC., OWNER OF LOT 13 & 14, BLOCK 5, HILLVIEW ADDITION NO. 2, DOES HEREBY ESTABLISH AND ACKNOWLEDGE THIS REPLAT AS THE OFFICIAL MAP AND PLAT OF "GRAYMER REPLAT", A REPLAT OF SAID LOTS 13 & 14, BLOCK 5, HILLVIEW ADDITION NO. 2, IN THE CITY OF PENDLETON UMATILLA COUNTY, OREGON, PREPARED IN ACCORDANCE WITH THE PROVISIONS OF ORS CHAPTER 92, AS REVISED, AND THE CITY OF PENDLETON AND UMATILLA COUNTY ORDINANCES.

TENTH STREET INVESTMENTS, INC.

BY: *[Signature]*
RANDALL C. GRAYMER, VICE PRESIDENT

ACKNOWLEDGMENT

STATE OF OREGON) SS
COUNTY OF UMATILLA)

THIS INSTRUMENT WAS ACKNOWLEDGED BEFORE ME THIS

2 DAY OF September 2014.

BY RANDALL C. GRAYMER

[Signature]
NOTARY PUBLIC FOR THE STATE OF OREGON

MY COMMISSION EXPIRES: 10-14-2016

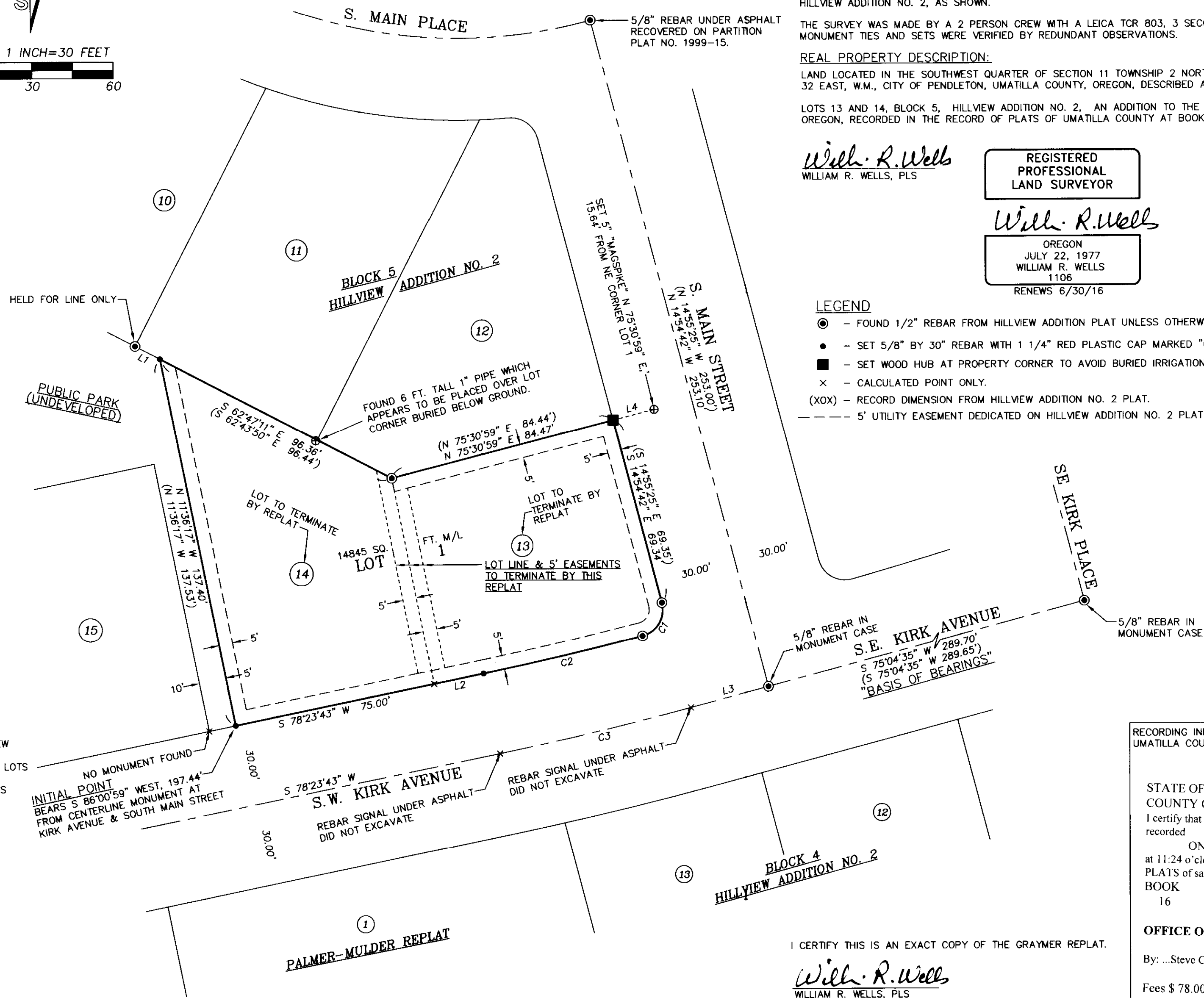
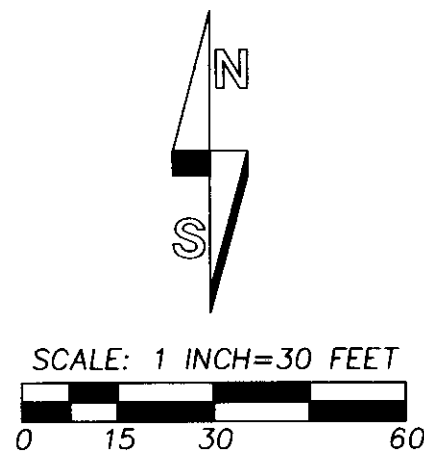
MY COMMISSION NUMBER: 471536

NO	DELTA	RADIUS	LENGTH	CHORD	CHORD BRG
C1	90°17'05"	10.00'	15.76'	14.18'	N 30°28'18" E
(C1)		10.00'	15.76'	14.17'	N 30°26'54" E
C2	2°49'44"	1221.74'	60.32'	60.32'	N 76°58'51" E
(C2)		1221.74'	60.32'	60.31'	N 76°58'50" E
C3	3°19'08"	1251.74'	72.51'	72.50'	N 76°44'09" E
(C3)		1251.74'	72.51'	72.50'	N 76°44'09" E

NO.	BEARING	DISTANCE
L1	S 62°47'11" E	10.32'
(L1)	S 62°43'50" E	9.56'
L2	S 78°23'43" W	18.64'
(L2)	S 78°23'43" W	18.64'
L3	S 75°04'35" W	29.64'
(L3)	S 75°04'35" W	29.64'
L4	N 75°30'59" E	15.64'

GRAYMER REPLAT

A REPLAT OF LOTS 13 AND 14, BLOCK 5, OF HILLVIEW ADDITION NO. 2 SITUATED IN THE SW1/4 SW1/4 OF SECTION 11, TOWNSHIP 2 NORTH, RANGE 32 EAST, W.M., CITY OF PENDLETON, UMATILLA COUNTY, OREGON.
JULY, 2014



SURVEYORS CERTIFICATE & NARRATIVE

I, WILLIAM R. WELLS, A PROFESSIONAL LAND SURVEYOR IN THE STATE OF OREGON, DO HEREBY CERTIFY THAT I HAVE CORRECTLY SURVEYED AND MARKED WITH LEGAL MONUMENTS, IN ACCORDANCE WITH ORS CHAPTER 92, AS REVISED, AND THE CITY OF PENDLETON AND UMATILLA COUNTY DEVELOPMENT ORDINANCES, THE LANDS SHOWN ON THE ACCOMPANYING PLAT OF "GRAYMER REPLAT".

THE SURVEY WAS MADE FROM CONTROLLING MONUMENTS ESTABLISHED ON THE PLAT OF HILLVIEW ADDITION NO. 2, AS SHOWN.

THE SURVEY WAS MADE BY A 2 PERSON CREW WITH A LEICA TCR 803, 3 SECOND TOTAL STATION. MONUMENT TIES AND SETS WERE VERIFIED BY REDUNDANT OBSERVATIONS.

REAL PROPERTY DESCRIPTION:

LAND LOCATED IN THE SOUTHWEST QUARTER OF SECTION 11 TOWNSHIP 2 NORTH, RANGE 32 EAST, W.M., CITY OF PENDLETON, UMATILLA COUNTY, OREGON, DESCRIBED AS FOLLOWS:

LOTS 13 AND 14, BLOCK 5, HILLVIEW ADDITION NO. 2, AN ADDITION TO THE CITY OF PENDLETON, OREGON, RECORDED IN THE RECORD OF PLATS OF UMATILLA COUNTY AT BOOK 11, PAGE 10.

[Signature]
WILLIAM R. WELLS, PLS

REGISTERED PROFESSIONAL LAND SURVEYOR

[Signature]

OREGON
JULY 22, 1977
WILLIAM R. WELLS
1106
RENEWS 6/30/16

LEGEND

- - FOUND 1/2" REBAR FROM HILLVIEW ADDITION PLAT UNLESS OTHERWISE NOTED.
- - SET 5/8" BY 30" REBAR WITH 1 1/4" RED PLASTIC CAP MARKED "OR PLS 1106 WA PLS 17372".
- - SET WOOD HUB AT PROPERTY CORNER TO AVOID BURIED IRRIGATION LINES.
- x - CALCULATED POINT ONLY.
- (XOX) - RECORD DIMENSION FROM HILLVIEW ADDITION NO. 2 PLAT.
- - - 5' UTILITY EASEMENT DEDICATED ON HILLVIEW ADDITION NO. 2 PLAT TO REMAIN.

RECORDING INFORMATION, UMATILLA COUNTY OFFICE OF RECORDS:

STATE OF OREGON, COUNTY OF UMATILLA }
I certify that this instrument was received and recorded
ON September 11, 2014
at 11:24 o'clock Am., in the record of PLATS of said County.
BOOK PAGE Slide
16 05

OFFICE OF COUNTY RECORDS

By: ...Steve Churchill...Records Officer

Fees \$ 78.00 No. 2014-6200636

I CERTIFY THIS IS AN EXACT COPY OF THE GRAYMER REPLAT.

[Signature]
WILLIAM R. WELLS, PLS

RECEIVED BY
Umatilla County Surveyor
Date: 9/11/2014
Rec'd By: G. Hensley
No.: 14-123-B

WELLS SURVEYING
920 SW FRAZER SUITE 102
P.O. BOX 1696
PENDLETON, OR 97801
PHONE: (541) 276-6362

DATE: 07/14 DR. BY: DMT
CK. BY: WRW NO: 14-1492

PROJECT: \GRAYMERFINAL

GRAYMER REPLAT

LOCATED IN THE SW1/4 SW1/4 OF SECTION 11, TOWNSHIP 2 NORTH, RANGE 32 EAST, W.M., CITY OF PENDLETON, UMATILLA COUNTY, OREGON.