

HENDERER REPLAT

A REPLAT OF LOTS 5 & 6 OF BLOCK 4, OF RANCHO VISTA ADDITION, UMATILLA COUNTY, OREGON.
 LOCATED IN THE NE1/4 OF NW1/4 & NW1/4 OF NE1/4 OF SECTION 10, TOWNSHIP 1 NORTH, RANGE 32 EAST, W.M.,
 UMATILLA COUNTY, OREGON.
 JUNE, 2012

APPROVALS

UMATILLA COUNTY SURVEYOR

I CERTIFY I HAVE EXAMINED THE ACCOMPANYING PLAT, THAT IT COMPLIES WITH THE LAWS OF THE STATE OF OREGON WITH REFERENCE TO THE FILING AND RECORDING OF SUCH PLATS, AND THEREFORE APPROVE SAID PLAT FOR SIGNATURE BY THE COUNTY COMMISSIONERS OF UMATILLA COUNTY, OREGON.

DATED THIS 21 DAY OF June, 2012.

David H. Klein
 UMATILLA COUNTY SURVEYOR

UMATILLA COUNTY COMMISSIONERS

THE ACCOMPANYING REPLAT IS APPROVED FOR FILING AND RECORDING IN THE RECORD OF PLATS OF UMATILLA COUNTY BY THE UNDERSIGNED, BY ITS ORDER.

DATED THIS 22nd DAY OF June, 2012.

William Lawrence Quinn
 COMMISSIONER

William B. Hamell
 COMMISSIONER

Absent
 COMMISSIONER

UMATILLA COUNTY PLANNING COMMISSION

THE ACCOMPANYING REPLAT IS HEREBY APPROVED THIS

26th DAY OF June, 2012.

Randy Randall
 CHAIRPERSON

ASSESSOR AND TAX COLLECTOR

WE, THE ASSESSOR AND THE TAX COLLECTOR OF UMATILLA COUNTY, OREGON, DO HEREBY CERTIFY THAT WE HAVE EXAMINED THE TAX RECORDS RELATIVE TO THE LAND COVERED BY THE ACCOMPANYING REPLAT AND THAT ALL AD/VALOREM AND SPECIAL ASSESSMENTS DUE PURSUANT TO LAW HAVE BEEN ASSESSED AND COLLECTED.

DATED THIS 20 DAY OF June, 2012.

Paul Chalmers
 COUNTY ASSESSOR

Bettina G. Wright
 COUNTY TAX COLLECTOR

OWNERS DECLARATION

I, STANLEY E. HENDERER JR., OWNER OF LOTS 5 AND 6, OF BLOCK 4, OF RANCHO VISTA ADDITION, DO HEREBY ESTABLISH AND ACKNOWLEDGE THIS REPLAT AS THE OFFICIAL MAP AND PLAT OF "HENDERER REPLAT", A REPLAT OF LOTS 5 AND 6, OF BLOCK 4 OF RANCHO VISTA ADDITION, IN UMATILLA COUNTY, OREGON.

Stanley E. Henderer Jr.
 STANLEY E. HENDERER JR., OWNER

ACKNOWLEDGEMENT
 STATE OF OREGON) SS
 COUNTY OF UMATILLA)

THIS INSTRUMENT WAS ACKNOWLEDGED BEFORE ME THIS 20
 DAY OF June, 2012.

BY STANLEY E. HENDERER JR.
David M. Judds
 NOTARY PUBLIC FOR THE STATE OF OREGON

MY COMMISSION EXPIRES: 10-14-12
 MY COMMISSION NUMBER: 432519

SURVEYORS CERTIFICATE AND NARRATIVE

I, JASON M. WELLS, A PROFESSIONAL LAND SURVEYOR IN THE STATE OF OREGON, DO HEREBY CERTIFY THAT I HAVE CORRECTLY SURVEYED AND MARKED WITH LEGAL MONUMENTS, IN ACCORDANCE WITH O.R.S. CHAPTER 92, AS REVISED, AND THE UMATILLA COUNTY DEVELOPMENT ORDINANCE, THE LANDS SHOWN IN THE ACCOMPANYING "HENDERER REPLAT".

THE SURVEY WAS MADE FROM CONTROLLING MONUMENTS ESTABLISHED ON THE PLAT OF RANCHO VISTA ADDITION. ALL OF THE ORIGINAL CORNER MONUMENTS WERE FOUND AND HELD, WITH THE EXCEPTION OF THOSE NOTED IN THE LEGEND.

THE SURVEY WAS MADE BY A 2 PERSON CREW USING A LEICA TPC 803 3" TOTAL STATION. MONUMENTS SET WERE VERIFIED BY SEPARATE BACKSIGHT OBSERVATIONS.

REAL PROPERTY DESCRIPTION:

A TRACT OF LAND LOCATED IN THE NORTHEAST QUARTER OF THE NORTHWEST QUARTER, AND THE NORTHWEST QUARTER OF THE NORTHEAST QUARTER OF SECTION 10, TOWNSHIP 1 NORTH, RANGE 32 EAST, W.M., UMATILLA COUNTY, OREGON, DESCRIBED AS FOLLOWS:

LOTS 5 AND 6 OF BLOCK 4, RANCHO VISTA ADDITION TO UMATILLA COUNTY, OREGON, RECORDED IN THE RECORD OF PLATS OF UMATILLA COUNTY AT BOOK 8, PAGE 34.

Jason M. Wells
 JASON M. WELLS

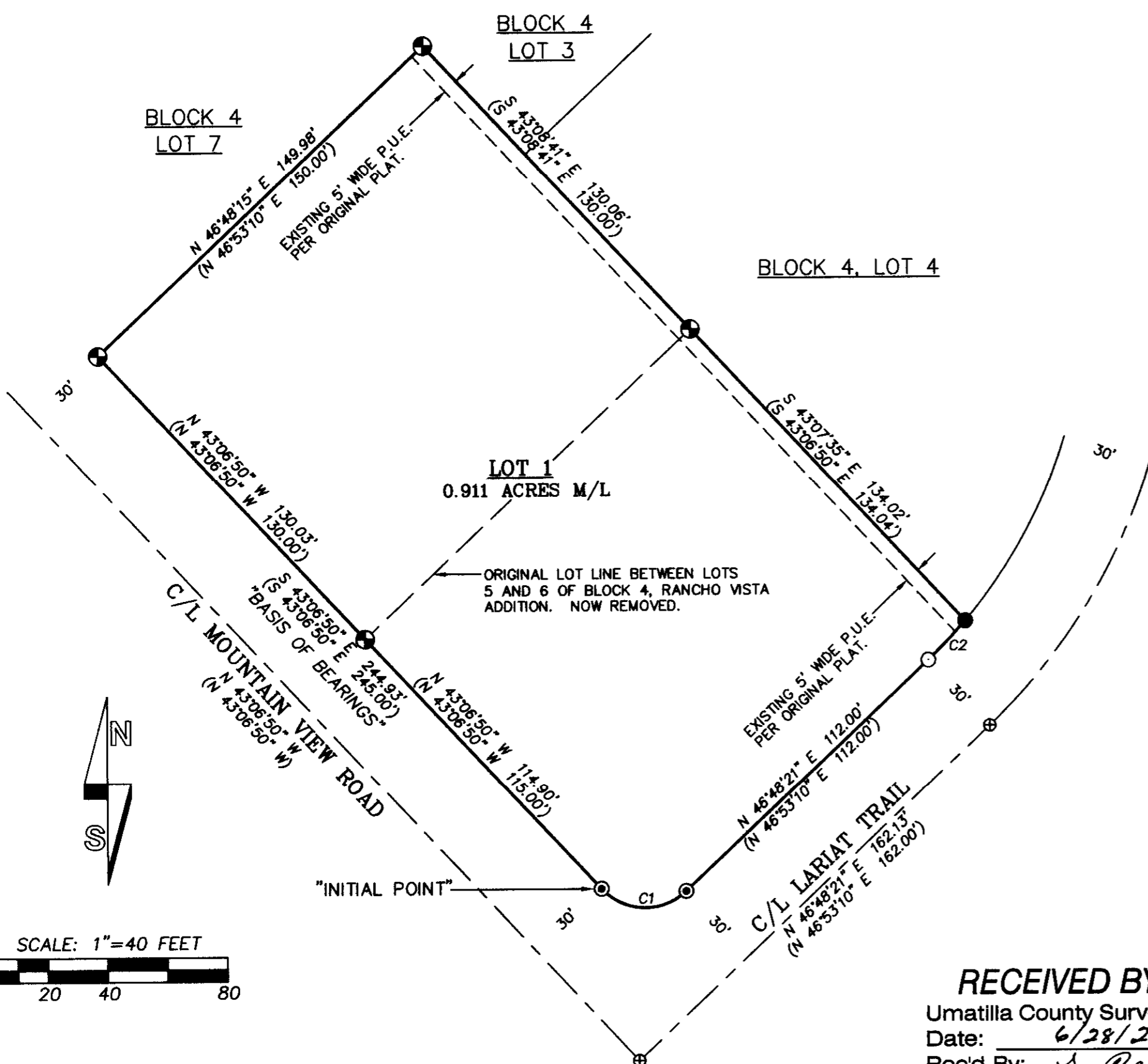
RECEIVED BY
 Umatilla County Surveyor
 Date: 6/28/2012
 Rec'd By: S. Oles
 No.: 12-092-B

I CERTIFY THIS IS AN EXACT COPY OF HENDERER REPLAT.

Jason M. Wells
 JASON M. WELLS, PLS

LEGEND

- FOUND BENT 1/2" IRON PIN FROM ORIGINAL PLAT OF RANCHO VISTA ADDITION, OUT OF POSITION. SET A 5/8"x30" IRON REBAR WITH 1 1/4" PURPLE PLASTIC CAP STAMPED "WELLS SURVEYING 54657 PLS." AT A POINT CALCULATED BY HOLDING RECORD DISTANCES FROM THE MOST NORTHERLY CORNER OF ORIGINAL LOT 5, AND THE POINT OF TANGENT MONUMENT OF CURVE 1 ALONG LARIAT DRIVE OF SAID LOT 5. FROM THIS POINT THE BENT 1/2" PIN BEARS N 46°45' W - 0.40 FEET.
- ORIGINAL MONUMENT NOT FOUND. CALCULATED POINT HOLDING RECORD RADIUS AND ARC LENGTH DISTANCE. SET A 5/8"x24" IRON REBAR WITH 1 1/4" PURPLE PLASTIC CAP MARKED "WELLS SURVEYING 54657 PLS."
- ⊙ FOUND 5/8" IRON PIN FROM THE ORIGINAL PLAT OF RANCHO VISTA ADDITION.
- ⊕ FOUND 1/2" IRON PIN FROM THE ORIGINAL PLAT OF RANCHO VISTA ADDITION.
- ⊕ CALCULATED POINT ONLY. NOTHING SET OR FOUND.
- (XOX) ORIGINAL DIMENSION FROM THE PLAT OF RANCHO VISTA ADDITION.



CURVE NO	DELTA	RADIUS	LENGTH	CHORD	CHORD BRG
C1	90°28'03"	20.00'	31.58'		
(C1)	90°00'00"	20.00'	31.42'		
C2	6°04'34"	170.00'	18.03'	18.02'	N 43°46'04" E
(C2)			18.03'	18.02'	N 43°50'50" E

RECORDING INFORMATION, UMATILLA COUNTY OFFICE OF RECORDS:

STATE OF OREGON, COUNTY OF UMATILLA }
 I certify that this instrument was received and recorded
 ON June 27, 2012
 at 3:15 o'clock P.m., in the record of
 PLATS of said County.
 BOOK PAGE Slide
 15 67

OFFICE OF COUNTY RECORDS

By: ...JEAN HEMPHILL...Records Officer
 Fees \$ 65.00 No. 2012-5930389

PROJECT: \Stanhendreplat

A REPLAT OF LOTS 5 & 6 OF BLOCK 4, RANCHO VISTA ADDITION, UMATILLA COUNTY, OREGON.

LOCATED IN THE NE1/4 OF NW1/4, & NW1/4 OF NE1/4, OF SECTION 10, TOWNSHIP 1 NORTH, RANGE 32 EAST, W.M., UMATILLA COUNTY, OREGON.

REGISTERED PROFESSIONAL LAND SURVEYOR

Jason M. Wells
 OREGON NOVEMBER 29, 2010
 JASON M. WELLS
 54657 PLS
 RENEWS 6/30/12

WELLS SURVEYING
 1 SW NYE AVENUE, SUITE B
 P.O. BOX 1696
 PENDLETON, OR 97801
 PHONE: (541) 276-6362

DATE: 02/12 DR. BY: JMW
 CK. BY: WRW NO: 12-1377