

HABITAT ADDITION

REPLAT of LOTS 4, 5, 6, & 7

BLOCK "H" CARELLE ADDITION

Umatilla County, Oregon LD-5N-682-04
Township 5N., Range 28E., W.M., Section 17
Northeast 1/4 of the Southwest 1/4

For
Oregon Trail Habitat for Humanity
P. O. Box 1365
Pendleton, Oregon 97801

Surveyors Certificate:

I, Ronald V. McKinnis, being a Registered Professional Land Surveyor of the State of Oregon, certify that I have correctly surveyed and monumented the lands portrayed on this Plat according to ORS Chapter 92 of the State of Oregon.

PROPERTY DESCRIPTION:

The property being partitioned is described in the Umatilla County Deed Records R 2003, Pg. 4530096 as: LOTS 4, 5, 6, & 7 of BLOCK "H" CARELLE ADDITION located in the Northeast Quarter of the Southwest Quarter of Section 17, Township 5 North, Range 28 East of the Willamette Meridian, Umatilla County, Oregon. SUBJECT to any and all water rights of way.

NARRATIVE:

This survey is based on the Original Subdivision of the Carelle Addition to Umatilla County / City of Umatilla. I used the found monuments to re-establish the Original Block "H" and Lot corners of lots 4, 5, 6, & 7. I then divided the 4 Original lots into 3 Lots for the development of new homes to be constructed by Habitat for Humanity. The Basis of Bearing for this survey was the found corners at the Northeast corner of Block "H" and the Northeast Corner of Lot 5 along the South edge of Tucker Avenue.

DEDICATION / ACKNOWLEDGEMENT:

We, the undersigned owners of the lands shown on this plat, do hereby dedicate the easements as shown on this Plat. We also acknowledge that we have caused this plat to be created and we recognize this Plat as the Official Plat and Map of the REPLAT as filed in the County of Umatilla, State of Oregon.

Don Waters
Don Waters, Executor, Habitat for Humanity

On this 1st day of August, 2006, the above individual appeared personally before me and is known to me to be the identical individual who executed the plat dedication and acknowledged that he did so freely and voluntarily.

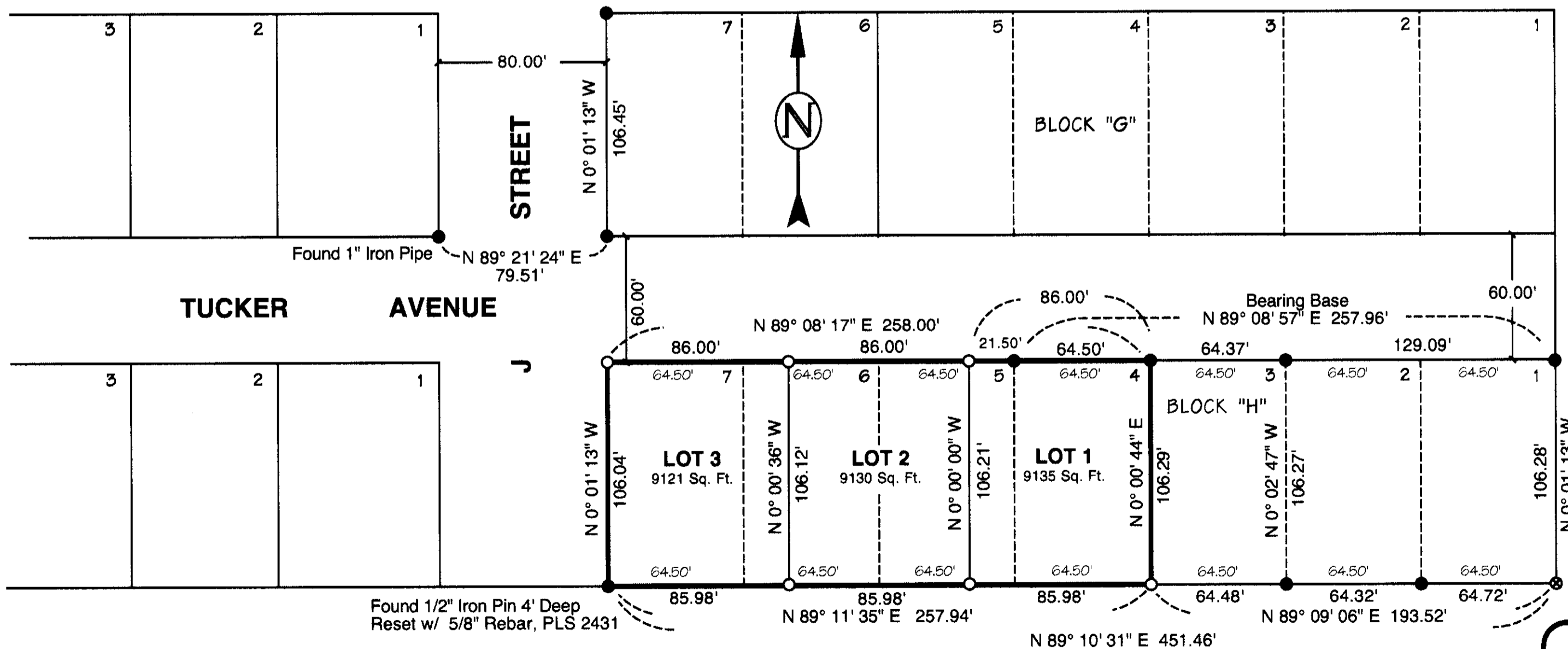
Before me: Carmen Velasco
Notary Public for Oregon

My Printed Name is Carmen Velasco

My Commission Number is 360698

My Commission Expires 3/17/07

CARELLE ADDITION



LEGEND

- Fees \$ 50.00, No. 2006-5050410
SET MONUMENTS - 5/8" x 30" Iron Rebar
W/ Plastic Caps Stamped - L.S. # 2431
- FOUND MONUMENT - 1/2" Rebar
for Carelle Add. or as Noted
- ⊙ CALCULATED POINT - Not Set
- ∞ Carelle Add. RECORD Bearing/Distance
- REPLAT BOUNDARIES

SCALE 1" = 50 Ft.
May, 2006

Rev. 07-07-06

I do hereby certify that this is a true and exact copy of the Original REPLAT as filed for Habitat for Humanity in Umatilla County.

Ronald V. McKinnis

RECEIVED BY
Umatilla County Surveyor
Date 8-06

06-486-B

REGISTERED
PROFESSIONAL
LAND SURVEYOR
Ronald V. McKinnis
OREGON
RONALD V. MCKINNIS
JAN. 23, 1990
2431
Expires 12-31-06

ENGINEERING - LAND SURVEYING - WATER RIGHTS
R. V. MCKINNIS ENGINEERING
79980 Prindle Loop Road
Hermiston, Oregon 97838
(541) -567-2017

APPROVALS:

I certify that I have examined and approved this REPLAT on this 2 day of August, 2006
David H. ...
Umatilla County Surveyor

I certify that I have examined and approved this REPLAT on this 4 day of August, 2006
[Signature]
Umatilla County Planning Dept.

I certify that I have examined and approved this REPLAT on this 1st day of Aug., 2006
Beverly A. Bridgewater
West Extension Irrigation Dist.

I certify that I have examined and approved this REPLAT on this 4th day of August, 2006
[Signature]
Umatilla County Tax Assessor

I certify that I have examined and approved this REPLAT on this 20 day of August, 2006
[Signature]
Umatilla County Tax Collector

I certify that I have examined and approved this REPLAT on this 4th day of August, 2006
Jennia D. Roberts
Umatilla County Commissioner

Emile M. ...
Umatilla County Commissioner
Absent
Umatilla County Commissioner

Recording Information
STATE OF OREGON }
COUNTY OF UMATILLA }
I certify that this instrument was received and recorded
ON August 4, 2006
at 4:00 o'clock Pm., in the record of
PLATS of said County.
BOOK PAGE Slide
15 14

OFFICE OF COUNTY RECORDS

By: JEAN HEMPHILL, Records Officer