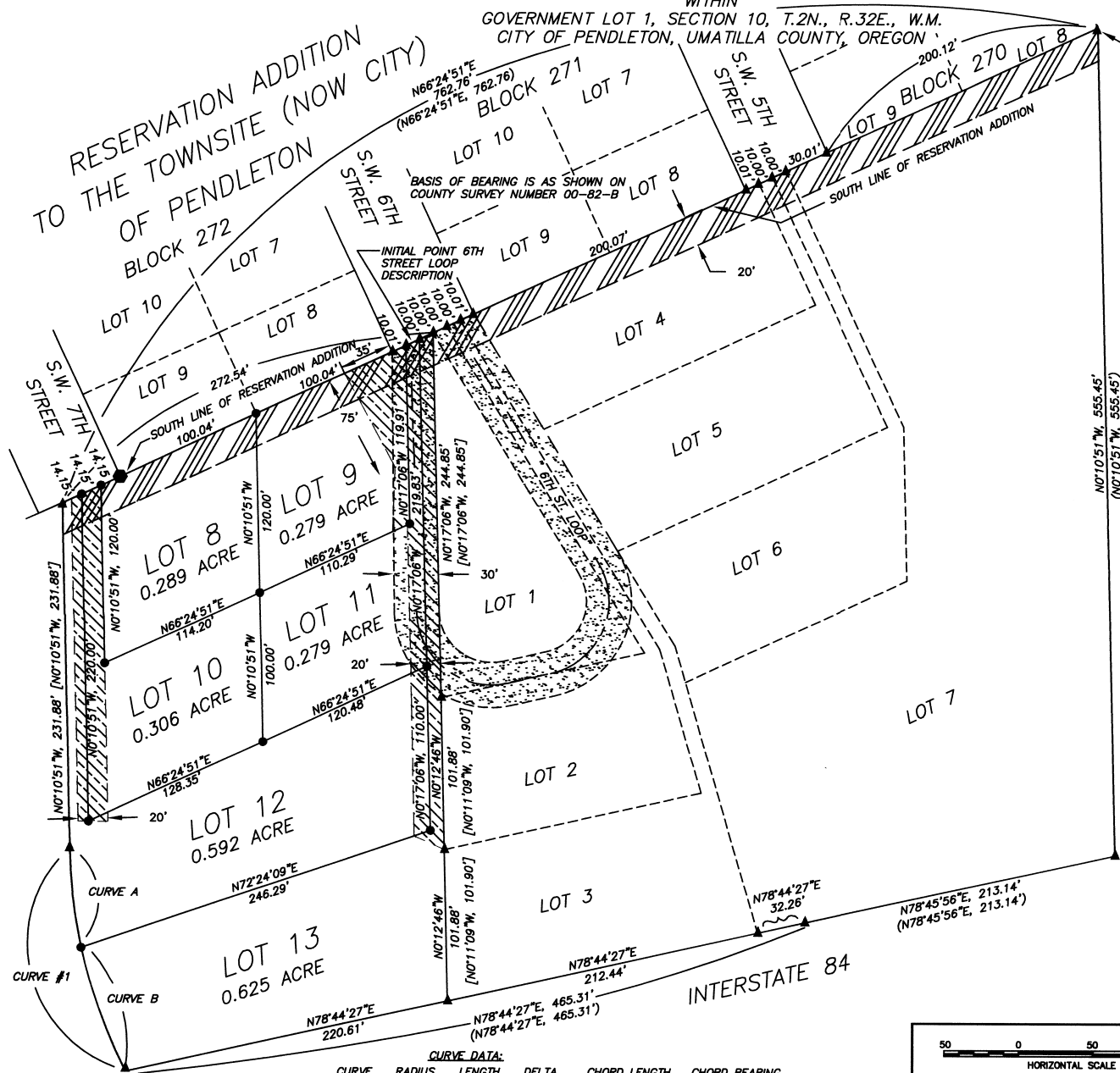


MILLENNIUM ESTATES - PHASE TWO

WITHIN
GOVERNMENT LOT 1, SECTION 10, T.2N., R.32E., W.M.
CITY OF PENDLETON, UMATILLA COUNTY, OREGON

RESERVATION ADDITION
TO THE TOWNSITE (NOW CITY)
OF PENDLETON
BLOCK 272



LEGEND

- ▲ FOUND MONUMENT AS SHOWN IN PHASE ONE OF MILLENNIUM ESTATES SUBDIVISION.
- SET 5/8" X 30" IRON REBAR WITH 3/4" BRASS WASHER ATTACHED, MARKED "PLS 1636".
- SET "PK" NAIL AND 3/4" BRASS WASHER IN TOP OF ROCK RETAINING WALL.
- () RECORD DIMENSION FROM COUNTY SURVEY NO. 00-82-B.
- [] RECORDED DIMENSION FROM PHASE ONE, MILLENNIUM ESTATES SUBDIVISION.
- ▨ EASEMENT FOR INGRESS AND EGRESS; AND PUBLIC UTILITY EASEMENT (NO TREES OR STRUCTURES ALLOWED)
- ▩ EXISTING PUBLIC UTILITY EASEMENT TO CITY OF PENDLETON.
- ▧ EXISTING ROAD EASEMENT AS SHOWN AND DEDICATED ON PHASE ONE, MILLENNIUM ESTATES SUBDIVISION.

THIS IS A TRUE AND EXACT COPY
Dennis L. Gaylord
DENNIS L. GAYLORD

STATE OF OREGON, }
COUNTY OF UMATILLA } ss
I certify that this instrument was received and recorded
ON January 27, 2003
at 3:40 o'clock Pm., in the record of
PLATS of said County.
BOOK PAGE Slide
14 53
OFFICE OF COUNTY RECORDS
By: ...GEORGIA DUNAWAY...Records Officer
Fees \$ 50.00 No. 2003-4290146

CURVE DATA:

CURVE	RADIUS	LENGTH	DELTA	CHORD LENGTH	CHORD BEARING
#1	350.00'	155.97'	25°31'58"	154.683'	N12°56'50"W
A	350.00'	67.81'	11°06'00"	67.70'	N5°43'52"W
B	350.00'	88.16'	14°25'58"	87.93'	N18°29'51"W

50 0 50 100 150
HORIZONTAL SCALE IN FEET

HORIZ. SCALE 1" = 50' DATE JANUARY, 2003

DENNIS L. GAYLORD, PLS
71614 S.W. LAKE DRIVE
PENDLETON, OR 97801
541-276-6260 ©
Mill Creek Drafting & Technical Services
609-688-1986

SHEET
1
of
2

OWNER'S DECLARATION & DEDICATION

I, GREGORY A. SMITH, DO HEREBY DECLARE THAT I HAVE CAUSED THIS SUBDIVISION PLAT TO BE PREPARED, AND DO HEREBY DESIGNATE THIS TO BE THE OFFICIAL PLAT OF "MILLENNIUM ESTATES, PHASE TWO", AND DO HEREBY ACKNOWLEDGE THE EXISTING PUBLIC UTILITY EASEMENT TO THE CITY OF PENDLETON AND DEDICATE THE PUBLIC ACCESS EASEMENT, PUBLIC UTILITY EASEMENTS AND THE PUBLIC EASEMENT FOR PRIVATE UTILITIES, CREATED BY THIS PLAT, AS SHOWN HEREON. RESPONSIBILITY FOR REPAIR AND MAINTENANCE OF ROADWAYS AND DRIVEWAYS NOW EXISTING OR CONSTRUCTED AS A RESULT OF THIS SUBDIVISION, SHALL FOREVER REST JOINTLY WITH THE OWNERS OF THE LOTS CREATED BY THIS SUBDIVISION PLAT.

Gregory A. Smith, President, SS&G, Inc.
GREGORY A. SMITH, PRESIDENT OF SS&G, INC.

SUBSCRIBED AND SWORN BEFORE ME
THIS 22nd DAY OF January, 2003.

Artemiza Huerta
NOTARY PUBLIC FOR ARIZONA - CALIFORNIA
10/29/2005
MY COMMISSION EXPIRES



THIS IS A TRUE AND EXACT COPY.
Dennis L. Gaylord
DENNIS L. GAYLORD

MILLENNIUM ESTATES, PHASE TWO

LOCATED WITHIN
GOVERNMENT LOT 1, SECTION 10 T.2N, R.32E, W.M.
CITY OF PENDLETON, UMATILLA COUNTY, OREGON

LEGAL DESCRIPTION:

A PORTION OF GOVERNMENT LOT NUMBER 1, SECTION 10, TOWNSHIP 2 NORTH, RANGE 32 EAST, WILLAMETTE MERIDIAN, UMATILLA COUNTY, OREGON, FURTHER DESCRIBED AS FOLLOWS:

LOT 8, MILLENNIUM ESTATES, PHASE ONE.

EXCEPTING THEREFROM:

1. A RIGHT-OF-WAY EASEMENT TO PACIFIC POWER & LIGHT CO. RECORDED ON OCTOBER 17, 1941, IN BOOK 160 AT PAGE 314 OF DEED RECORDS, UMATILLA COUNTY, OREGON.
2. A RIGHT-OF-WAY EASEMENT TO CITY OF PENDLETON RECORDED ON JANUARY 2, 1962, IN BOOK 266 AT PAGE 91 OF DEED RECORDS, UMATILLA, OREGON.
3. ACCESS RESTRICTIONS, INCLUDING RIGHT-OF-WAY, TO STATE OF OREGON, HIGHWAY COMMISSION, RECORDED ON JULY 17, 1967, IN BOOK 290 AT PAGE 16, DEED RECORDS, UMATILLA COUNTY, OREGON.

THE ABOVE DESCRIBED PARCEL CONTAINS 2.37 ACRES, MORE OR LESS. PHASE TWO OF MILLENNIUM ESTATES SUBDIVIDES WHAT IS IDENTIFIED AS LOT 8, IN PHASE ONE, INTO SIX LOTS, NUMBERED 8 THROUGH 13. LOTS 1 THROUGH 7, PHASE ONE ARE NOT AFFECTED BY PHASE TWO.

THERE ARE NO WATER RIGHTS APPURTENANT TO THIS PARCEL OF LAND.

**"6TH STREET LOOP"
EASEMENT DESCRIPTION**

A STRIP OF LAND 30 FEET WIDE, 15 FEET EACH SIDE OF THE FOLLOWING DESCRIBED CENTERLINE:

BEGINNING AT A POINT ON THE SOUTH LINE OF THE SURVEY OF THE RESERVATION ADDITION TO THE CITY OF PENDLETON, S66°24'51"W, A DISTANCE OF 46.53 FEET FROM THE MONUMENT MARKING THE SOUTHEAST CORNER OF 6TH STREET AND THE NORTHWEST CORNER OF LOT 4 OF MILLENNIUM ESTATES; THENCE S00°17'06"E, A DISTANCE OF 180.67 FEET; THENCE ON A 50 FOOT RADIUS CURVE TO THE LEFT, THE LONG CHORD BEING S50°46'18"E, A DISTANCE OF 77.15 FEET; THENCE N78°44'27"E, A DISTANCE OF 29.31 FEET; THENCE ON A 50 FOOT RADIUS CURVE TO THE LEFT, THE LONG CHORD BEING N24°18'40"E, A DISTANCE OF 81.34 FEET; THENCE N30°07'12"W, A DISTANCE OF 187.50 FEET, TO THE SAID SOUTH LINE OF THE SURVEY OF THE RESERVATION ADDITION TO THE CITY OF PENDLETON, SAID POINT BEING S66°24'51"W, A DISTANCE OF 15.10 FEET FROM THE SAID MONUMENT MARKING THE SOUTHEAST CORNER OF 6TH STREET AND THE NORTHWEST CORNER OF LOT 4 OF MILLENNIUM ESTATES.

THE SIDE LINES OF THE ABOVE DESCRIBED EASEMENT BEGIN AT AND EXTEND TO THE SAID SOUTH LINE OF THE SURVEY OF THE RESERVATION ADDITION TO THE CITY OF PENDLETON.

NOTE:
SEE COUNTY SURVEY NUMBER 00-82-B FOR ESTABLISHMENT OF EXTERIOR LINES.

REPAIR AND MAINTENANCE OF ALL ROAD IMPROVEMENTS AND DRIVEWAYS LOCATED WITHIN AND UPON THE LANDS COMPRISING THIS SUBDIVISION RESTS ENTIRELY WITH THE OWNERS OF THE LOTS WITHIN THIS SUBDIVISION.

SURVEYOR'S CERTIFICATE

I, DENNIS L. GAYLORD, A REGISTERED PROFESSIONAL LAND SURVEYOR IN THE STATE OF OREGON, HAVE RECOVERED AND/OR MARKED WITH LEGAL MONUMENTS, THE LANDS SHOWN ON THIS PLAT.

Dennis L. Gaylord
DENNIS L. GAYLORD, P.L.S.

REGISTERED PROFESSIONAL LAND SURVEYOR

Dennis L. Gaylord

OREGON
JULY 14, 1978
DENNIS L. GAYLORD
1636

RENEWS JUNE 30, 2003

APPROVALS:

CITY OF PENDLETON

IN OPEN SESSION OF THE PENDLETON PLANNING COMMISSION
ON THE 19th DAY OF December, 2002

SAID MEETING A MATTER OF RECORD, APPROVED
THIS 22nd DAY OF January, 2003.

Vincent R. Culp
CITY OF PENDLETON PLANNING COMMISSION CHAIRMAN
Reifmuller
CITY OF PENDLETON PLANNING DIRECTOR

THE ACCOMPANYING PLAT IS HEREBY APPROVED
THIS 27 DAY OF January, 2003.

James C. ...
CITY OF PENDLETON SURVEYOR

UMATILLA COUNTY

THE ACCOMPANYING PLAT HAS BEEN EXAMINED AND IS HEREBY APPROVED
THIS 24 DAY OF January, 2003.

David H. ...
UMATILLA COUNTY SURVEYOR

APPROVED FOR RECORDING IN THE "RECORD OF TOWN PLATS":
THIS 24th DAY OF JANUARY, 2003.

William S. Harrell
CHAIRMAN
Dennis D. ...
COMMISSIONER
Emile M. ...
COMMISSIONER

WE, THE ASSESSOR AND TAX COLLECTOR FOR UMATILLA COUNTY, OREGON, HAVE EXAMINED THE TAX RECORDS RELATIVE TO THE LAND COVERED BY THE ACCOMPANYING PLAT AND FIND ALL MONIES DUE FOR STATE AND COUNTY TAXES AND ASSESSMENTS THAT COULD CONSTITUTE A LIEN ON SAID LAND HAVE BEEN PAID AND WE HEREBY APPROVE SAID PLAT.

DATED THIS 29th DAY OF January, 2003.

Pat ...
UMATILLA COUNTY ASSESSOR
Shanda ...
UMATILLA COUNTY TAX COLLECTOR

RECORDING INFORMATION
OFFICE OF COUNTY RECORDS:

STATE OF OREGON, }
COUNTY OF UMATILLA }
I certify that this instrument was received and recorded

ON January 27, 2003
at 3:40 o'clock P.m., in the record of
PLATS of said County.
BOOK 14 PAGE 53 Slide

OFFICE OF COUNTY RECORDS
By: ...GEORGIA DUNAWAY...Records Officer
Fees \$ 50.00 No. 2003-4290146

MILLENNIUM ESTATES PHASE II	DENNIS L. GAYLORD, PLS 71614 S.W. LAKE DRIVE PENDLETON, OR 97801 541-276-6260 © <i>Mill Brook Drafting & Technical Services</i> 800-827-1926	SHEET
		2 of 2
DATE: JANUARY, 2003		