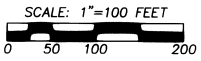


O'HARROW SUBDIVISION

A SUBDIVISION OF PARCEL 3 OF UMATILLA COUNTY PARTITION PLAT NUMBER 1998-10, LOCATED IN THE CITY OF WESTON AND UMATILLA COUNTY, OREGON.
NOVEMBER, 2002



198 11 8 96

APPROVALS

CITY OF WESTON

CITY OF WESTON MAYOR

THE ACCOMPANYING PLAT IS HEREBY APPROVED AND ADOPTED
THIS 15 DAY OF November, 2002.

David C. Crumpton
MAYOR

CITY OF WESTON CITY ENGINEER

THE ACCOMPANYING PLAT IS HEREBY APPROVED AND ADOPTED
THIS 15 DAY OF November, 2002.

L.T. Schumann, P.E.
CITY ENGINEER

UMATILLA COUNTY

UMATILLA COUNTY PLANNING COMMISSION

THE ACCOMPANYING PLAT IS HEREBY APPROVED AND ADOPTED
THIS 20 DAY OF November, 2002.

Michael P. Keller
CHAIRPERSON

SECRETARY

UMATILLA COUNTY SURVEYOR

I, CERTIFY THAT I HAVE EXAMINED THE ACCOMPANYING PLAT, THAT IT COMPLIES WITH THE LAWS OF THE STATE OF OREGON WITH REFERENCE TO THE FILING AND RECORDING OF SUCH PLATS, AND I THEREFORE APPROVE SAID PLAT FOR SIGNATURE BY THE COUNTY COMMISSIONERS OF UMATILLA COUNTY, OREGON.

DATED THIS 20 DAY OF November, 2002.

David H. Kline
UMATILLA COUNTY SURVEYOR

UMATILLA COUNTY ASSESSOR AND TAX COLLECTOR

WE, THE ASSESSOR AND THE TAX COLLECTOR OF UMATILLA COUNTY, OREGON, DO HEREBY CERTIFY THAT WE HAVE EXAMINED THE TAX RECORDS RELATIVE TO THE LAND COVERED BY THE ACCOMPANYING PLAT AND THAT ALL MONETARY SUMS DUE FOR STATE AND COUNTY TAXES AND ASSESSMENTS THAT COULD CONSTITUTE A LIEN ON SAID LAND HAVE BEEN PAID AND WE APPROVE SAID PLAT.

DATED THIS 21st DAY OF November, 2002.

Paul J. Schell
UMATILLA COUNTY ASSESSOR

David J. Schell
UMATILLA COUNTY TAX COLLECTOR

UMATILLA COUNTY COMMISSIONERS

THIS IS TO CERTIFY THAT THE ACCOMPANYING PLAT IS APPROVED FOR FILING AND RECORDING IN THE RECORD OF TOWN PLATS OF UMATILLA COUNTY, OREGON, BY THE UNDERSIGNED, BY IT'S ORDER.

DATED THIS 25 DAY OF November, 2002.

Emile M. Johnson
CHAIRMAN

COMMISSIONER

David J. Schell
COMMISSIONER

REGISTERED
PROFESSIONAL
LAND SURVEYOR

William R. Wells

OREGON
JULY 22, 1977
WILLIAM R. WELLS
1106

RENEWS 6/30/04

OWNER'S DECLARATION

MICHAEL E. O'HARROW AND JAMIE O'HARROW, HUSBAND AND WIFE, OWNERS OF THE LAND SHOWN ON THE ACCOMPANYING PLAT, DO HEREBY ESTABLISH AND ACKNOWLEDGE THIS PLAT AS THE OFFICIAL MAP AND PLAT OF O'HARROW SUBDIVISION, A SUBDIVISION LOCATED IN THE CITY OF WESTON AND UMATILLA COUNTY, OREGON.

WE HEREBY DEDICATE THE EASEMENTS SHOWN OR NOTED ON THIS PLAT FOR PUBLIC USE, UNLESS OTHERWISE NOTED.

Michael E. O'Harrow *Jamie O'Harrow*
MICHAEL E. O'HARROW JAMIE O'HARROW

SUBSCRIBED AND SWORN BEFORE ME, THIS 11 DAY OF November, 2002.

Dawn M. Tubbs
NOTARY PUBLIC FOR THE STATE OF OREGON

COMMISSION NUMBER: 338724

MY COMMISSION EXPIRES: 10-14-2004



TRUST DEED BENEFICIARY'S CONSENT TO SUBDIVISION:

WE, SAMUEL E. HUMBERT AND ROSELLA I. HUMBERT, HUSBAND AND WIFE, DO HEREBY CONSENT TO THIS SUBDIVISION AND DEDICATION OF EASEMENTS.

Samuel E. Humbert *Rosella I. Humbert*
SAMUEL E. HUMBERT ROSELLA I. HUMBERT

SUBSCRIBED AND SWORN BEFORE ME, THIS 11 DAY OF November, 2002.

Cordy H. George
NOTARY PUBLIC FOR THE STATE OF OREGON

COMMISSION NUMBER: 353424

MY COMMISSION EXPIRES: 3-29-06



SURVEYOR'S CERTIFICATE

I, WILLIAM R. WELLS, A PROFESSIONAL LAND SURVEYOR IN THE STATE OF OREGON, DO HEREBY CERTIFY THAT I HAVE CORRECTLY SURVEYED AND MARKED WITH LEGAL MONUMENTS, IN ACCORDANCE WITH O.R.S. CHAPTER 92, AS REVISED, THE LAND SHOWN IN THE ACCOMPANYING PLAT OF O'HARROW SUBDIVISION.

REAL PROPERTY DESCRIPTION:

A PARCEL OF LAND LOCATED IN THE SOUTHEAST QUARTER OF SECTION 22, TOWNSHIP 4 NORTH, RANGE 35 EAST, W.M., CITY OF WESTON, UMATILLA COUNTY, OREGON. DESCRIBED AS FOLLOWS:

PARCEL 3 OF PARTITION PLAT NO. 1998-10, UMATILLA COUNTY PLAT RECORDS.

William R. Wells
WILLIAM R. WELLS PLS 1106

I CERTIFY THIS IS AN EXACT COPY OF O'HARROW SUBDIVISION.
William R. Wells
WILLIAM R. WELLS, PLS

NO.	BEARING	DISTANCE	CITY LIMITS	RECORD DIMENSION
L1	N 89°57'32" W	78.87'	(N89°59'58" W 78.90')R1	
L2	N 00°39'07" W	50.00'	(N00°45'55" W 50.00')R1	
L3	N 89°33'53" E	39.67'	(N89°59'58" W 40.00')R1	
L4	N 00°48'25" W	80.00'	(S0048°58' E 80.00')R1	
L5	N 89°56'11" E	67.08'	(N89°59'58" W 67.08')R1	
L6	N 00°38'37" W	89.83'	(S00°45'58" E 89.79')R1	
L7	S 38°29'34" W	136.74'		
L8	N 38°29'34" E	159.00'		
L9	N 00°46'30" W	46.39'		

- LEGEND**
- - SET 5/8" BY 30" IRON REBAR WITH 1 1/4" YELLOW PLASTIC CAP STAMPED FOR PLS 17273, WA PLS 1106.
 - ⊙ - FOUND 5/8" REBAR, FROM PARTITION PLAT NO. 1998-10.
 - - CALCULATED POINT ONLY, NOT SET OR FOUND.
 - L2 - INDICATES LINE TOO SHORT TO ANNOTATE, SEE SHORT LINE TABLE.
 -
 -
 - (XOX)R1 - RECORD DIMENSIONS FROM PARTITION PLAT NO. 1998-10, UMATILLA COUNTY OFFICE OF RECORDS.

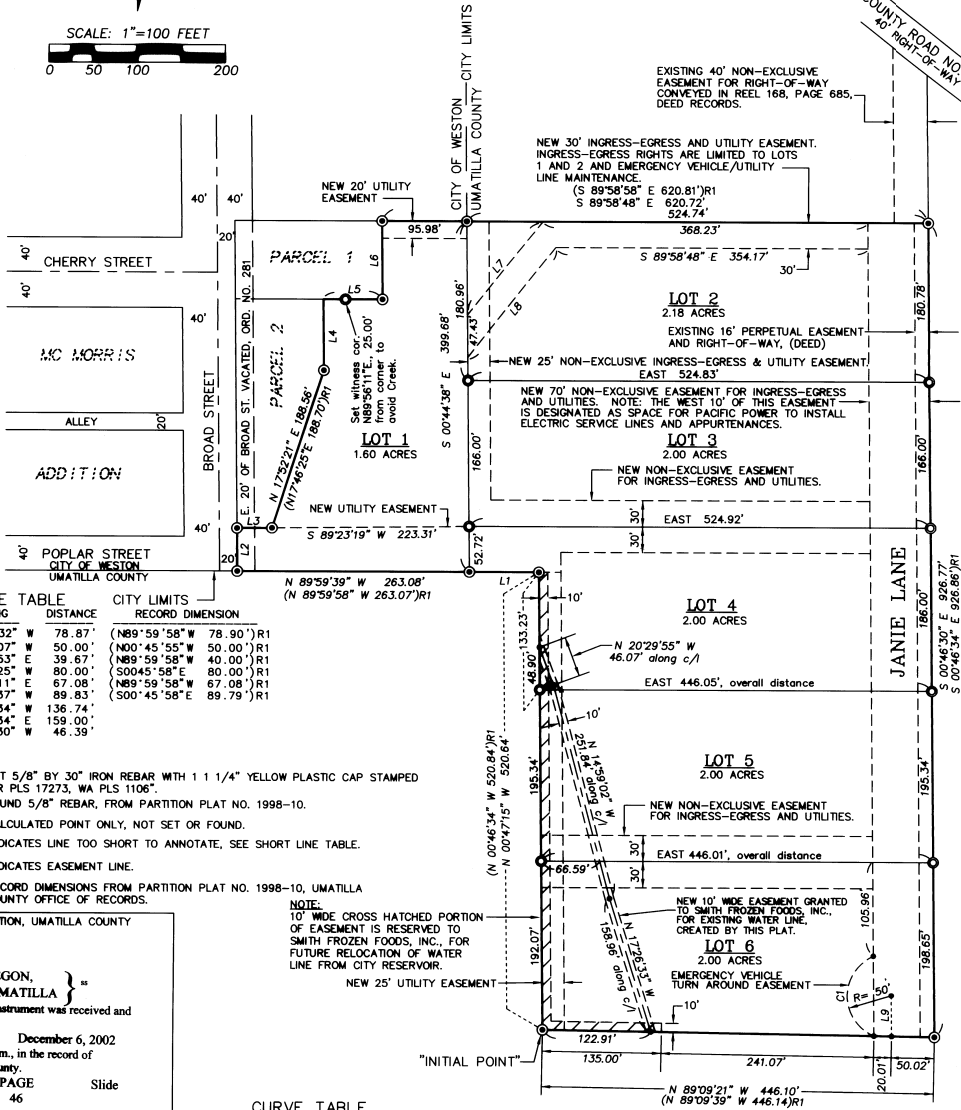
RECORDING INFORMATION, UMATILLA COUNTY OF RECORDS:

STATE OF OREGON, COUNTY OF UMATILLA }
I certify that this instrument was received and recorded
ON December 6, 2002
at 11:15 o'clock Am., in the record of PLATS of said County.
BOOK PAGE Slide
14 46

OFFICE OF COUNTY RECORDS
By: ...GBORGIA DUNAWAY...Records Officer
Fees \$ 50.00 No. 2002-4250582

NO.	DELTA	RADIUS	LENGTH	LONG CHORD
C1	132°50'37"	50.00'	115.93'	S 00°46'30" E 91.65'

NOTE:
LOT 1 IS WITHIN THE WESTON CITY LIMITS. LOTS 2 THROUGH 6 ARE OUTSIDE THE CITY LIMITS.



WILLIAM R. WELLS, PLS
357 N.E. HWY. 11
P.O. BOX 1696
PENDLETON, OR 97801
PHONE: (541) 276-6362

DATE: 02/02 DR. BY: DMT
CK BY: WRW NO: 01-774

PROJECT:
O'HARROW SUBDIVISION
LOCATED IN THE SE1/4 OF SECTION 22, T4N, R35E, W4M, CITY OF WESTON AND UMATILLA COUNTY, OREGON.