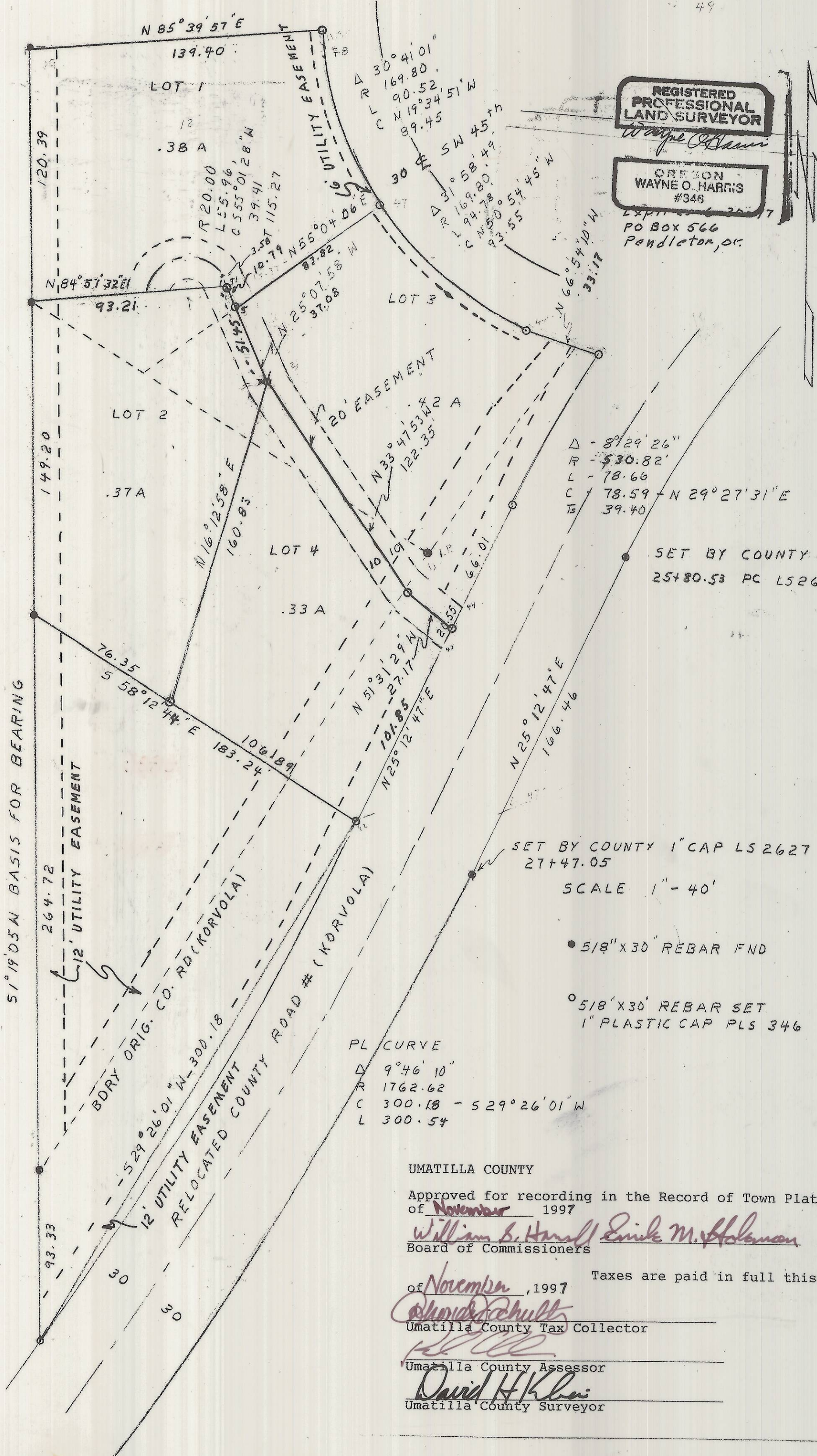


LEEN ADDITION, A
REPLAT OF LOTS 12-14, BLOCK 1,

VALLEY VIEW ESTATES AN ADDITION TO THE CITY OF PENDLETON
UMATILLA COUNTY, OREGON.
SW 1/4, NW 1/4 SEC. 21, T. 2 N. R. 32 E., W.M.



REGISTERED
PROFESSIONAL
LAND SURVEYOR

WAYNE O. HARRIS
#346
PO Box 566
Pendleton, OR

SURVEYOR'S CERTIFICATE AND NARRATIVE

I, Wayne O. Harris, Professional Land Surveyor number 346, registered in the State of Oregon hereby certify that I have correctly surveyed and marked with proper monuments this replat of lots 12-15 of Block 1 of Valley View Estates, an Addition to the City of Pendleton in the County of Umatilla belonging to Lenny and Kelli Leen as recorded on Roll 186 page 1603 Umatilla County Deed Records and Todd and Pauline Davis as recorded on Roll 270 Page 121 said Deed Records. These Parcels had been previously platted on the 4th of April, 1978. Pins were found as shown. There were some discrepancies but since the were original points they were allowed to stand and distances were adjusted. Bearings are based on the monuments found on the West line of Valley View Estates. The new county road alignment was set by the Umatilla County road crew.

LEGAL DESCRIPTION

LOTS 12, 13, 14, 15 in Block 1 of Valley View Estates an Addition in Umatilla County, Oregon including an easement 20 feet in width being 10 feet on either side of the following described center-line; Commencing at the Southeast corner of lot 4 and running thence North 25' 12' 47" East a distance of 101.85 feet to the true point of beginning; thence North 51' 31' 29" West a distance of 27.17 feet; thence North 33' 47' 58" West a distance of 122.35 feet; thence North 25' 07' 58" West a distance of 51.45 feet; thence Northwesterly along a 20 feet radius curve to the left, the long chord bears South 55' 01' 28" West distance of 39.41 feet, a distance of 55.96 feet, FOR ACCESS AND UTILITIES.

OWNERS DECLARATION

Know all men by these presents that we have caused this replat to be prepared and that we hereby declare this to be the official Map of the LEEN ADDITION A REPLAT OF LOTS 12-15, BLOCK 1 VALLEY VIEW ESTATES and that we hereby dedicate the easement to the public forever.

<u>Lenny Leen</u> date <u>11-4-97</u>	<u>Kelli Leen</u> date <u>11-4-97</u>
<u>Todd Davis</u> date <u>11-9-97</u>	<u>Pauline Davis</u> date <u>11-4-97</u>

STATE OF OREGON
COUNTY OF UMATILLA

Subscribed and Sworn before me on this 4th day of November, 1997

Shirley A. Hopper
NOTARY PUBLIC FOR OREGON

My Commission Expires June 23, 1998



CITY OF PENDLETON

I, City of Pendleton Surveyor do hereby certify that I have examined the accompanying replat, that it complies with the statutes of the State of Oregon and the City of Pendleton with reference to the filing and recording of said replat.

Gerald Odman, PLS Date 11/3/97

CITY OF PENDLETON PLANNING COMMISSION hereby approves this replat for filing

N/A Chairman Michael A. Hyde Director 5-16-97

I CERTIFY THIS IS A TRUE COPY.
Wayne O. Harris

UMATILLA COUNTY
Approved for recording in the Record of Town Plats this 5th Day of November 1997
William B. Harrell Ernie M. Holman Jennis D. Roberts
Board of Commissioners

of November, 1997 Taxes are paid in full this 5th day
Colin D. Schultz
Umatilla County Tax Collector

David H. Klein
Umatilla County Assessor
David H. Klein
Umatilla County Surveyor

RECEIVED BY
Umatilla County Surveyor
Date 11-97
Rec'd By AK
No. 97-218-B

STATE OF OREGON, COUNTY OF UMATILLA } ss
I certify that this instrument was received and recorded
ON November 5, 1997
at 3:55 o'clock P.M., in the record of PLATS of said County.
BOOK 13 PAGE 107 Slide
OFFICE OF COUNTY RECORDS
By: Steve Churchill Records Officer
Fees \$ 25.00 No. 1997-3190087