

RIVER VIEW TERRACE SUBDIVISION

TO THE CITY OF UMATILLA,
UMATILLA COUNTY, OREGON

SCALE: 1"=100'

BASIS OF BEARING

Bearing between Peterson Addition INITIAL POINT and the 5/8" iron rod at the intersection of Raymond St. and Dean Ave. is N17°52'30"W as determined by Original Plat Calls recorded in Plat Book 9 Page 14, Umatilla County Records.

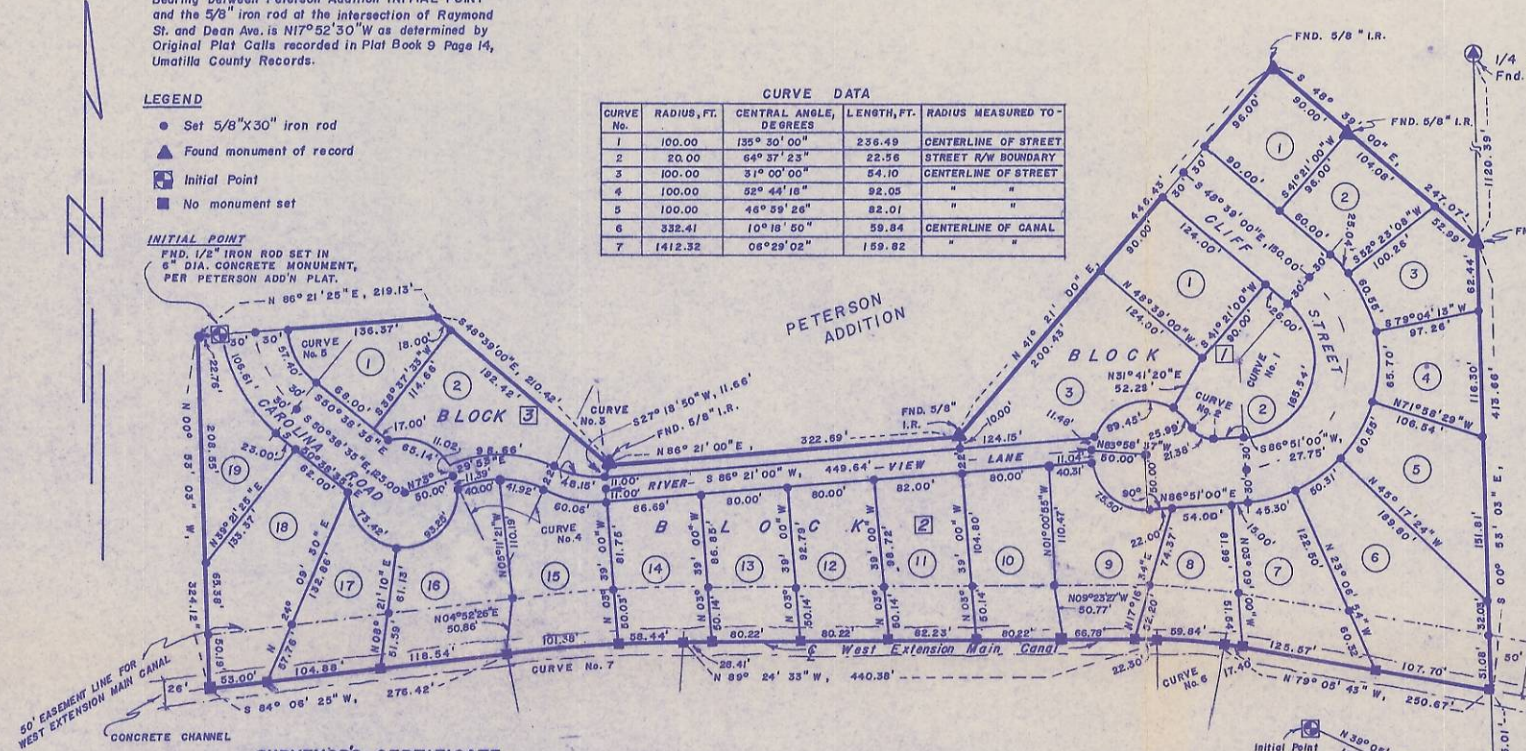
LEGEND

- Set 5/8"x30" iron rod
- ▲ Found monument of record
- Initial Point
- No monument set

INITIAL POINT

FND. 1 1/2" IRON ROD SET IN 6" DIA. CONCRETE MONUMENT, PER PETERSON ADD'N PLAT.

CURVE No.	RADIUS, FT.	CENTRAL ANGLE, DEGREES	LENGTH, FT.	RADIUS MEASURED TO
1	100.00	135° 30' 00"	236.49	CENTERLINE OF STREET
2	20.00	64° 37' 23"	22.56	STREET R/W BOUNDARY
3	100.00	31° 00' 00"	54.10	CENTERLINE OF STREET
4	100.00	32° 44' 18"	92.05	" "
5	100.00	46° 59' 26"	92.01	" "
6	332.41	10° 18' 50"	59.84	CENTERLINE OF CANAL
7	1412.32	06° 29' 02"	159.82	" "



APPROVALS

CITY OF UMATILLA PLANNING COMMISSION
The accompanying plat is hereby approved by resolution and adopted on this 4 day of Aug., 1980 and approval duly filed.

Marilyn E. Johnson, Chairman
Robert Smith, Secretary

CITY ENGINEER
Approved this 23rd day of July, 1980

David J. Bratt, City Engineer / Surveyor

UMATILLA CITY COUNCIL
The accompanying plat is hereby approved by resolution and adopted on this 4 day of Aug., 1980 and approval duly filed.

Ray D. Kusa, Mayor

WEST EXTENSION IRRIGATION DISTRICT
The accompanying plat is hereby approved by resolution and adopted on this 14th day of July, 1980 and approval duly filed.

Leo O. Lytle, Chairman

STATE OF OREGON, COUNTY OF UMATILLA, } ss
I, J. Dean Fouquette, Sr., County Clerk, certify that this instrument was received and recorded ON Aug. 7, 1980

at 3:00 o'clock PM in the record of Town Plat of said County in Book 12 Page 30

J. DEAN FOUQUETTE, SR.
County Clerk
By Betty Jo Browning Deputy
Fees \$ 25.00 No. 5678

SURVEYOR'S CERTIFICATE

STATE OF OREGON) COUNTY OF UMATILLA) ss

I, Thomas F. Lagler, being first duly sworn, do depose and say that I am a duly registered surveyor of the State of Oregon, and that I have correctly surveyed and marked with legal monuments the land represented on the above plat, the exterior boundaries of which are described as follows:

Beginning at the Initial Point of Peterson Addition to the City of Umatilla, Umatilla County, Oregon at which point I found a 6" diameter concrete monument containing a 1/2" diameter iron rod, located N 39° 05' 04" W, a distance of 1871.35 feet from a brass monument set as the corner of Section 18, T2N, R29E, W4E, said point being called in the Peterson Addition plat to be located N 39° 21' 30" W, 1869.21 feet from the S.E. corner said Section 18, and also being the INITIAL POINT of River View Terrace Subdivision;
Thence N 86° 21' 25" E, a distance of 196.37 feet; Thence S 48° 39' 00" E, a distance of 210.42 feet; Thence N 86° 21' 00" E, a distance of 322.69 feet; Thence N 41° 21' 00" E, a distance of 446.43 feet; Thence S 48° 39' 00" E, a distance of 247.07 feet; Thence S 00° 53' 03" E, a distance of 413.66 feet; Thence N 79° 05' 43" W, a distance of 250.67 feet; Thence along a 332.41 foot radius curve concave to the south a distance of 59.84 feet to a point the Long Chord of which bears N 84° 15' 08" W at a distance 59.76 feet. Thence N 69° 24' 33" W a distance of 440.38 feet; Thence along a 1412.32 foot radius curve concave to the south a distance of 159.82 feet to a point the Long Chord of which bears S 67° 20' 56" W at a distance of 159.74 feet; Thence S 84° 06' 25" W, a distance of 276.42 feet; Thence N 00° 53' 03" W, a distance of 324.12 feet; Thence N 86° 21' 25" E, a distance of 22.76 feet to the INITIAL POINT.

REGISTERED PROFESSIONAL LAND SURVEYOR
THOMAS F. LAGLER
1242

Thomas F. Lagler
Thomas F. Lagler

STATE OF OREGON) COUNTY OF UMATILLA) ss

Be it hereby known by these presents that the undersigned does hereby establish and acknowledge the accompanying plat as the official map and plat of RIVER VIEW TERRACE SUBDIVISION to the City of Umatilla, Umatilla County, Oregon, and that the undersigned owner of the land on the accompanying plat does hereby dedicate to the use of the public forever the streets and avenues designated on said plat together with a six foot wide easement adjacent to all lot boundaries and street rights of way for installation and maintenance of public utilities

DEDICATION

INLAND EMPIRE BANK
A CORPORATION

BY: *Roger S. Bounds*
President Date 7/31/80
BY: *Ernie Loomis*
Cashier Date 7/31/80

RVT DEVELOPMENT CORPORATION

BY: *Eugene Watkins*
President Date 2/12/80

Be it remembered that on this 12 day of February, 1980 personally appeared before me *Eugene Watkins*, who is known to me to be the identical person described in and who executed the above instrument, and who acknowledged to me that he executed the same freely and voluntarily.

Shelma E. Owen
Notary Public of Oregon
My Commission expires 4/9/83

CORPORATE ACKNOWLEDGEMENT:

On this 31 day of July, 1980 appeared Roger S. Bounds and Ernie Loomis both to me personally known, who being duly sworn, did say that he, the said Roger S. Bounds is the President, and he Ernie Loomis is the Cashier of Inland Empire Bank, the within named Corporation, and the seal affixed to said instrument is the Corporate seal of said Corporation, and that the instrument was signed and sealed in behalf of said Corporation by authority of its Board of Directors, and Roger S. Bounds and Ernie Loomis acknowledged said instrument to be the free act and deed of said Corporation.

BY: *W. L. ...*
NOTARY PUBLIC OF OREGON. My Commission expires March 2, 1981

Subscribed and sworn before me this 11 day of February, 1980.
Shelma E. Owen
NOTARY PUBLIC FOR OREGON
My commission expires 4/9/83

UMATILLA COUNTY ASSESSOR AND TAX COLLECTOR

I, James T. White Sr. and I, D. L. Bratt, respectively Assessor and Tax Collector of Umatilla County, Oregon, each hereby certify that we have examined the tax records relative to the land covered by the accompanying plat, and that all monies due for state and county taxes and assessments that could now constitute a lien on said land have been paid and we hereby approve said plat, dated this 6 day of August, 1980

James T. White, Assessor *D. L. Bratt*, Tax Collector

UMATILLA COUNTY COMMISSION

This is to certify that the accompanying plat is approved for filing and placed in the record of town plats of Umatilla County, Oregon by the undersigned by its order dated the 6 day of August, 1980, and recorded in the County Journal , page .

Robert K. Stoddard, Chairman
Fred Bull, Commissioner
Commissioner

UMATILLA COUNTY CLERK

ATTEST: I, J. Dean Fouquette Sr. County Clerk of Umatilla County, Oregon, do hereby certify that the above named were on the date of said order above specified and are now the duly qualified, elected, sworn and acting chairman and commissioners of said county; that the signatures are the genuine signatures thereof and the seal hereto affixed is the seal of my office.

J. Dean Fouquette Sr.
County Clerk

RIVER VIEW TERRACE SUBDIVISION

seal attached
I certify this to be a true copy of original.
Eugene Watkins