

I, J. DEAN FOUQUETTE, SR., COUNTY CLERK, CERTIFY THAT THIS INSTRUMENT WAS RECEIVED AND RECORDED ON AUGUST 1, 1979, AT 8:00 O'CLOCK A.M. IN THE RECORD OF TOWN PLATS OF SAID COUNTY IN BOOK 12 PAGE 12.

J. Dean Fouquette, Sr. BY *Billy Downing* DEPUTY COUNTY CLERK FEES \$17.00 NO. 54578

DEDICATION:
 KNOW ALL MEN BY THESE PRESENTS: THAT THE UNDERSIGNED OWNERS OF THE LAND SHOWN ON THE ACCOMPANYING PLAT, DO HEREBY DEDICATE TO THE USE OF THE PUBLIC FOREVER THE STREETS AND AVENUES DESIGNATED ON SAID PLAT AND A 6' CONTINUOUS EASEMENT ON ALL LOTS, SAID EASEMENT BEING PARALLEL TO ALL LOT LINES, IS HEREBY DEDICATED BY THE DEDICATOR FOR SEWER, WATER, ELECTRICITY, LIGHT, GAS, TELEPHONE, TELEVISION AND OTHER UTILITIES AND FOR THEIR INSTALLATION AND MAINTENANCE, IRRESPECTIVE OF WHETHER THE SAME MAY BE INSTALLED BEFORE OR AFTER SALE BY THE DEDICATORS HEREIN. THAT UNDERSIGNED PARTIES DO HEREBY ESTABLISH AND ACKNOWLEDGE THE ACCOMPANYING PLAT AS THE OFFICIAL MAP AND PLAT OF VANTAGE NORTH PHASE I, UMATILLA CO., OR.

Jim M. Vickery *Donald E. Neumann* *Danny Cox* *Kenneth Batty*
 JIM M. VICKERY, PRESIDENT DONALD E. NEUMANN, SEC. DANNY COX KENNETH BATTY

STATE OF OREGON) S.S.
 COUNTY OF OREGON)
 ON THIS 30th DAY OF July, 1979 PERSONALLY APPEARED DANNY COX AND KENNETH BATTY KNOWN TO ME TO BE THE IDENTICAL PERSONS WHO EXECUTED THE ABOVE DEDICATION AND WHO PERSONALLY ACKNOWLEDGED TO ME THAT THEY EXECUTED SAME FREELY AND VOLUNTARILY.

SUBSCRIBED AND SWORN BEFORE ME THIS 30th DAY OF July, 1979.
Denny D. Hallbrook MY COMMISSION EXPIRES 5-16-80
 NOTARY PUBLIC FOR OREGON

STATE OF OREGON) S.S.
 COUNTY OF UMATILLA)
 ON THIS 30th DAY OF July, 1979 PERSONALLY APPEARED JIM M. VICKERY AND DONALD E. NEUMANN WHO, BEING DULY SWORN, EACH FOR HIMSELF AND NOT ONE FOR THE OTHER DID SAY THAT THE FORMER IS THE PRESIDENT AND THE LATTER IS THE SECRETARY OF NOKIA DEVELOPMENT, INC., AN OREGON CORPORATION AND THAT THE SEAL AFFIXED TO THE FOREGOING INSTRUMENT IS THE CORPORATE SEAL OF SAID CORPORATION AND SAID INSTRUMENT WAS SIGNED AND SEALED IN BEHALF OF SAID CORPORATION BY AUTHORITY OF ITS BOARD OF DIRECTORS, AND THEY ACKNOWLEDGED SAID INSTRUMENT TO BE THEIR VOLUNTARY ACT AND DEEDS.

Denny D. Hallbrook MY COMMISSION EXPIRES 5-16-80
 NOTARY PUBLIC FOR OREGON

DEDICATION ENJOINMENT
 INLAND EMPIRE BANK OF HERMISTON, OREGON, A CORPORATION, FOR THE PURPOSE OF CONSENTING TO THIS DEDICATION, HEREBY JOINS IN THE ABOVE DEDICATION. IN WITNESS WHEREOF, INLAND EMPIRE BANK OF HERMISTON, OREGON, BY ITS AUTHORITY OF ITS BOARD OF DIRECTORS, HAS CAUSED THESE PRESENTS TO BE SIGNED BY ITS PRESIDENT AND CASHIER AND THE CORPORATE SEAL TO BE AFFIXED THIS 30th DAY OF July, 1979.

Roger S. Bounds *Ernest B. Loomis*
 ROGER S. BOUNDS, PRESIDENT ERNEST B. LOOMIS, CASHIER

STATE OF OREGON) S.S.
 COUNTY OF UMATILLA)
 ON THIS 30th DAY OF July, 1979, BEFORE ME PERSONALLY APPEARED THE ABOVE NAMED ROGER S. BOUNDS, PRESIDENT AND ERNEST B. LOOMIS, CASHIER OF INLAND EMPIRE BANK OF HERMISTON, OREGON, WHO ACKNOWLEDGED THE ABOVE INSTRUMENT TO BE THE TRUE ACT AND DEED OF SAID CORPORATION.

SUBSCRIBED AND SWORN BEFORE ME THIS 30th DAY OF July, 1979.
Janet S. Bush MY COMMISSION EXPIRES 2-22-80
 NOTARY PUBLIC FOR OREGON

CITY OF STANFIELD PLANNING COMMISSION
 THE ACCOMPANYING PLAT IS HEREBY APPROVED AND ADOPTED ON THIS 30th DAY OF July, 1979, AND APPROVAL DULY FILED.

Lois E. Christensen *Siida S. Taylor*
 CHAIRMAN SECRETARY

STANFIELD CITY COUNCIL
 THE ACCOMPANYING PLAT IS HEREBY APPROVED AND ADOPTED ON THIS 30th DAY OF July, 1979, AND APPROVAL DULY FILED.

CITY ENGINEER
 APPROVED THIS 30th DAY OF Aug., 1979.
John Parante D.S. MAYOR
John Parante D.S. CITY ENGINEER

UMATILLA COUNTY COMMISSION
 THIS IS TO CERTIFY THAT THE ACCOMPANYING PLAT IS APPROVED FOR FILING AND PLACED IN THE RECORD OF TOWN PLATS OF UMATILLA COUNTY, OREGON, BY THE UNDERSIGNED BY ITS ORDER DATED THE 21st DAY OF July, 1979 AND RECORDED IN THE COUNTY JOURNAL _____ PAGE _____

Forrest K. Starnell *Jack Halverson* *John Egan*
 CHAIRMAN COMMISSIONER COMMISSIONER

UMATILLA COUNTY CLERK
 UMATILLA COUNTY ASSESSOR AND TAX COLLECTOR
 I, JAMES T. WHITE, SR. AND I, D.L. BRATT, RESPECTIVELY ASSESSOR AND TAX COLLECTOR OF UMATILLA COUNTY, OREGON EACH HEREBY CERTIFY THAT WE HAVE EXAMINED THE TAX RECORDS RELATIVE TO THE LAND COVERED BY THE ACCOMPANYING PLAT, AND THAT ALL MONIES DUE FOR STATE AND COUNTY TAXES AND ASSESSMENTS THAT COULD NOW CONSTITUTE A LIEN ON SAID LAND HAVE BEEN PAID AND WE HEREBY APPROVE SAID PLAT, DATED THIS 21st DAY OF July, 1979.

James T. White *D. L. Bratt*
 COUNTY ASSESSOR COUNTY TAX COLLECTOR

SURVEYORS CERTIFICATE

I, DONALD L. STAEBLER, BEING FIRST DULY SWORN, DO DEPOSE AND SAY THAT I AM A DULY REGISTERED SURVEYOR OF THE STATE OF OREGON, AND THAT I HAVE CORRECTLY SURVEYED AND MARKED WITH LEGAL MONUMENTS THE LAND REPRESENTED ON THE ACCOMPANYING PLAT; AT THE INITIAL POINT I FOUND A BRASS CAP PROPERLY STAMPED MARKING THE LOCATION OF THE S.E. CORNER OF SECTION 30, T4N, R29E E.W.M.; THENCE N89°54'53"W ALONG THE SOUTH LINE OF THE SAID SECTION 30 A DISTANCE OF 1368.035 FEET; THENCE N01°50'31"E A DISTANCE OF 265.893 FEET; THENCE ALONG THE ARC OF A 1635.000 FOOT RADIUS CIRCULAR CURVE TO THE RIGHT A DISTANCE OF 18.398 FEET (CHORD BEARS N87°50'08"W AND IS 18.398 FEET LONG); THENCE N02°29'12"E A DISTANCE OF 270.000 FEET; THENCE ALONG THE ARC OF A 1365.000 FOOT RADIUS CIRCULAR CURVE TO THE LEFT A DISTANCE OF 906.804 FEET (CHORD BEARS N73°27'18"E AND IS 890.220 FEET LONG); THENCE N54°25'25"E A DISTANCE OF 90.000 FEET; THENCE S35°34'35"E A DISTANCE OF 80.000 FEET; THENCE ALONG THE ARC OF A 15.000 FOOT RADIUS CIRCULAR CURVE TO THE LEFT A DISTANCE OF 23.562 FEET (CHORD BEARS S80°34'35"E AND IS 21.213 FEET LONG); THENCE N54°25'25"E A DISTANCE OF 325.000 FEET; THENCE ALONG THE ARC OF A 20.000 FOOT RADIUS CIRCULAR CURVE TO THE LEFT A DISTANCE OF 31.416 FEET (CHORD BEARS N09°25'25"E AND IS 28.284 FEET LONG) TO A POINT ON THE WESTERLY RIGHT OF WAY LINE OF U.S. HIGHWAY NO. 395; THENCE S35°34'35"E ALONG THE SAID WESTERLY RIGHT OF WAY LINE OF U.S. HIGHWAY NO. 395 A DISTANCE OF 120.000 FEET; THENCE ALONG THE ARC OF A 20.000 FOOT RADIUS CIRCULAR CURVE TO THE LEFT A DISTANCE OF 31.416 FEET (CHORD BEARS N80°34'35"W AND IS 28.284 FEET LONG); THENCE S54°25'25"W A DISTANCE OF 325.000 FEET; THENCE ALONG THE ARC OF A 15.000 FOOT RADIUS CIRCULAR CURVE TO THE LEFT A DISTANCE OF 23.562 FEET (CHORD BEARS S09°25'25"W AND IS 21.213 FEET LONG); THENCE S35°34'35"E A DISTANCE OF 158.431 FEET; THENCE ALONG THE ARC OF A 30.000 FOOT RADIUS CIRCULAR CURVE TO THE LEFT A DISTANCE OF 20.390 FEET (CHORD BEARS S55°02'52"E AND IS 20.000 FEET LONG); THENCE ALONG THE ARC OF A 60.000 FOOT RADIUS CIRCULAR CURVE TO THE RIGHT A DISTANCE OF 135.028 FEET (CHORD BEARS S10°02'51"E AND IS 108.284 FEET LONG); THENCE S35°34'35"E A DISTANCE OF 346.398 FEET TO A POINT ON THE EAST LINE OF THE SAID SECTION 30; THENCE S0°01'23"E ALONG THE EAST LINE OF THE SAID SECTION 30 A DISTANCE OF 160.893 FEET TO THE INITIAL POINT.

VANTAGE NORTH PHASE I

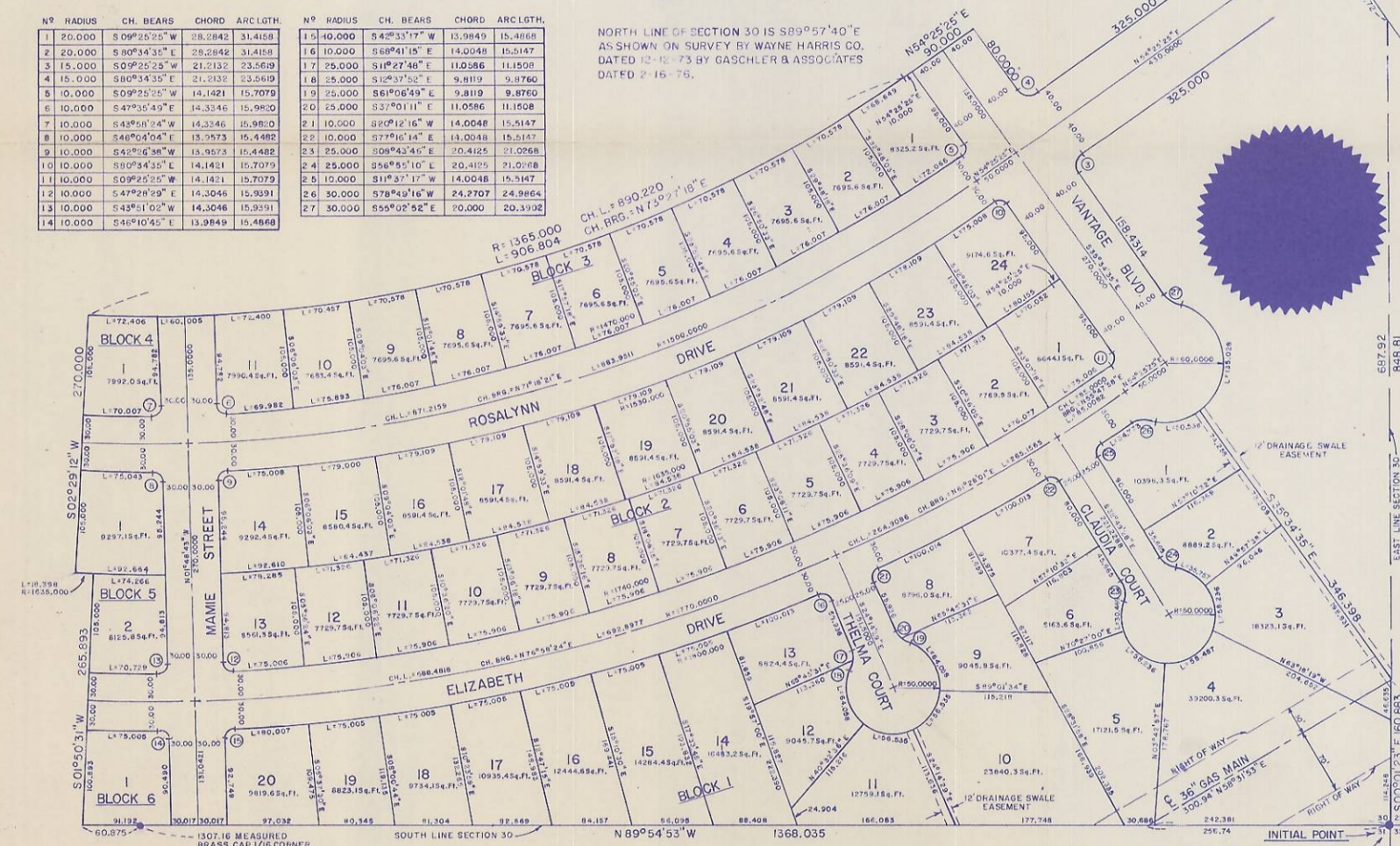
LOCATED IN THE SOUTH 1/2 OF THE S.E. 1/4 OF SEC. 30, T4N, R29E W.M. UMATILLA COUNTY, OREGON.



Donald L. Staebler
 DONALD L. STAEBLER

Donald L. Staebler
 DONALD L. STAEBLER P.E.
 SUBSCRIBED AND SWORN TO BEFORE ME THIS 26th DAY OF July, 1979.
Denny D. Hallbrook MY COMMISSION EXPIRES 5-16-80
 NOTARY PUBLIC FOR OREGON

CURVE DATA				BEARING BASE					
Nº	RADIUS	CH. BEARS	CHORD ARCLGTH.	Nº	RADIUS	CH. BEARS	CHORD ARCLGTH.		
1	20.000	S09°25'25"W	28.2842	31.4158	15	10.000	S42°33'17"W	15.9849	15.4868
2	20.000	S80°34'35"E	28.2842	31.4158	16	10.000	S68°41'15"E	14.0048	15.5147
3	15.000	S09°25'25"W	21.2132	23.5619	17	25.000	S11°27'46"E	11.0586	11.1508
4	15.000	S80°34'35"E	21.2132	23.5619	18	25.000	S12°37'52"E	9.8119	9.8760
5	10.000	S09°25'25"W	14.1421	15.7079	19	25.000	S61°06'49"E	9.8119	9.8760
6	10.000	S47°35'49"E	14.3346	15.9820	20	25.000	S37°00'11"E	11.0586	11.1508
7	10.000	S43°58'24"W	14.3346	15.9820	21	10.000	S20°21'18"W	14.0048	15.5147
8	10.000	S46°04'04"E	15.9573	16.4482	22	10.000	S77°46'14"E	14.0048	15.5147
9	10.000	S42°06'38"W	15.9673	16.4482	23	25.000	S08°43'46"E	20.4125	21.0268
10	10.000	S80°34'35"E	14.1421	15.7079	24	25.000	S56°55'10"E	20.4125	21.0268
11	10.000	S09°25'25"W	14.1421	15.7079	25	10.000	S11°37'17"W	14.0048	15.5147
12	10.000	S47°28'29"E	14.3045	15.9391	26	30.000	S78°49'16"W	24.2707	24.9864
13	10.000	S43°51'02"W	14.3045	15.9391	27	30.000	S55°02'52"E	20.0000	20.3392
14	10.000	S46°10'45"E	13.9849	15.4868					



FOUND BRASS CAP MARKING THE CORNER COMMON TO SECTIONS 29, 30, 31 & 32, T4N, R29E.W.M.