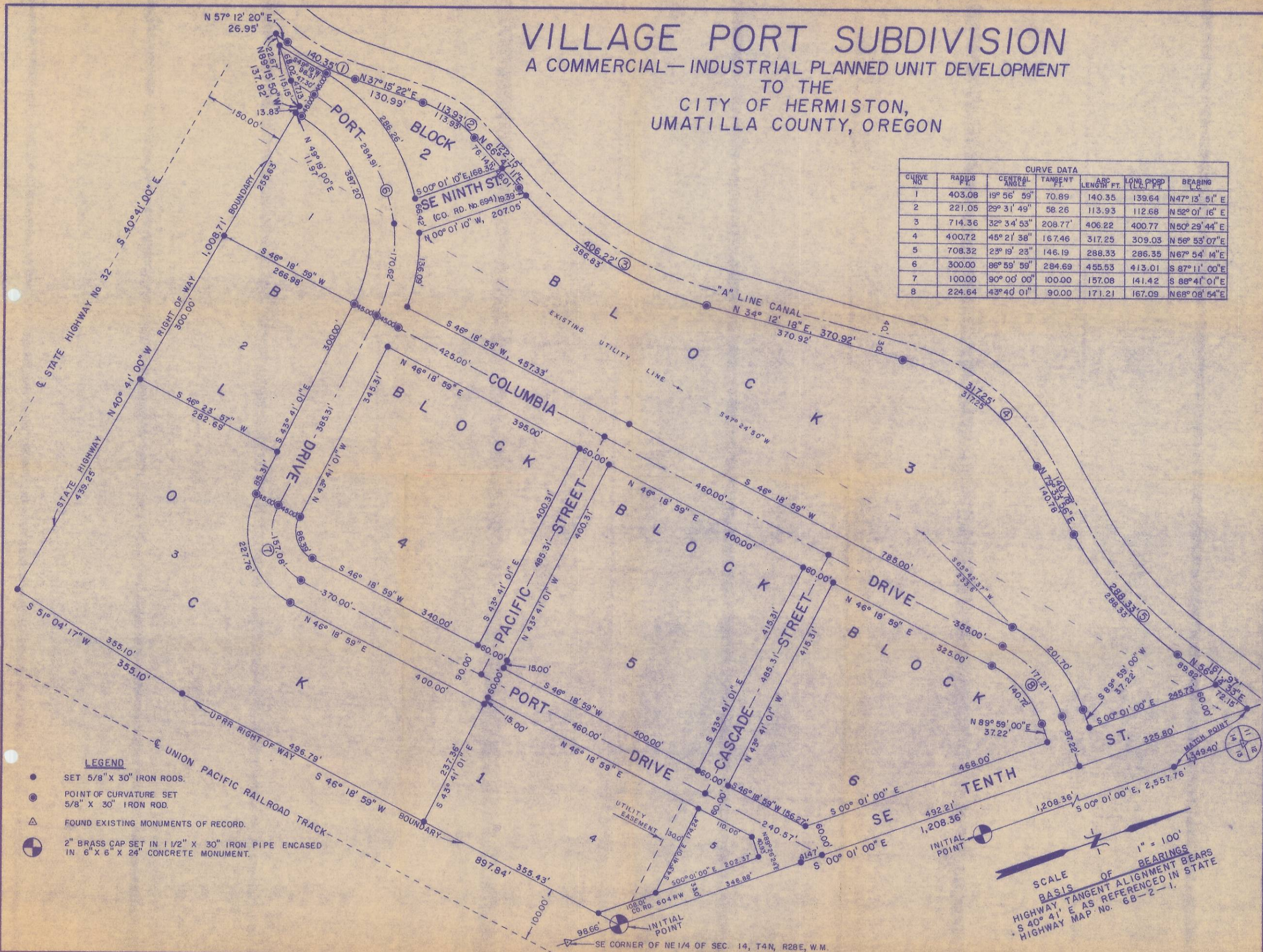


VILLAGE PORT SUBDIVISION

A COMMERCIAL—INDUSTRIAL PLANNED UNIT DEVELOPMENT
TO THE
CITY OF HERMISTON,
UMATILLA COUNTY, OREGON

CURVE DATA						
CURVE NO.	RADIUS FT.	CENTRAL ANGLE	TANGENT FT.	ARC LENGTH FT.	LONG CHORD (L.C.) FT.	BEARING
1	403.08	19° 56' 59"	70.89	140.35	139.64	N47° 13' 51" E
2	221.05	29° 31' 49"	58.26	113.93	112.68	N52° 01' 16" E
3	714.36	32° 34' 53"	208.77	406.22	400.77	N50° 29' 44" E
4	400.72	45° 21' 38"	167.46	317.25	309.03	N56° 53' 07" E
5	708.32	23° 19' 23"	146.19	288.33	286.35	N67° 54' 14" E
6	300.00	86° 59' 59"	284.69	455.53	413.01	S 87° 11' 00" E
7	100.00	90° 00' 00"	100.00	157.08	141.42	S 88° 41' 01" E
8	224.64	43° 40' 01"	90.00	171.21	167.09	N68° 08' 54" E



LEGEND

- SET 5/8" X 30" IRON RODS.
- ⊙ POINT OF CURVATURE SET 5/8" X 30" IRON ROD.
- △ FOUND EXISTING MONUMENTS OF RECORD.
- ⊕ 2" BRASS CAP SET IN 1 1/2" X 30" IRON PIPE ENCASED IN 6" X 6" X 24" CONCRETE MONUMENT.

SCALE OF BEARINGS
BASIS TANGENT ALIGNMENT BEARS
S 40° 41' E AS REFERENCED IN STATE
HIGHWAY MAP No. 6B-2-1.

1" = 100'

SE CORNER OF NE 1/4 OF SEC. 14, T4N, R28E, W.M.

VILLAGE PORT SUBDIVISION

ENGINEERS CERTIFICATE

STATE OF OREGON)SS
COUNTY OF UMATILLA)

I, Thomas F. Logier, being first duly sworn, do depose and say that I am a duly registered engineer of the State of Oregon, and that I have correctly surveyed and marked with legal monuments the land represented on the above plat as follows:

Commencing at the northeast corner of Section 14, T4N, R28E, W.M.; thence S 00° 01' 00" E along the east boundary of said section 2,557.76 feet to the INITIAL POINT; thence S 46° 18' 59" W, 897.84 feet; thence S 51° 04' 17" W, 355.10 feet; thence N 40° 41' 00" W, 1,008.71 feet; thence N 89° 15' 50" W, 137.82 feet; thence N 57° 12' 20" E, 26.95 feet; thence on a 403.08 foot radius curve to the left 140.35 feet to the point at which the long chord bears N 47° 13' 51" E, 139.64 feet; thence N 37° 15' 22" E, 130.99 feet; thence on a 221.05 foot radius curve to the right 113.93 feet to the point at which the long chord bears N 52° 01' 16" E, 112.68 feet; thence N 66° 47' 11" E, 122.15 feet; thence on a 714.36 foot radius curve to the left 406.22 feet to the point at which the long chord bears N 50° 29' 44" E, 400.77 feet; thence N 34° 12' 18" E, 370.92 feet; thence on a 400.12 foot radius curve to the right 317.25 feet to the point at which the long chord bears N 56° 53' 07" E, 309.03 feet; thence N 79° 33' 56" E, 140.78 feet; thence on a 708.32 foot radius curve to the left 288.33 feet to the point at which the long chord bears N 67° 54' 14" E, 286.35 feet; thence N 56° 14' 33" E, 161.97 feet; thence S 00° 01' 00" E, 1,208.36 feet to the INITIAL POINT.



Thomas F. Logier
Thomas F. Logier, P.E.

Subscribed and sworn before me
this 13 day of October, 1976.

Thelma E. Owen
Notary Public for Oregon
My commission expires 4/9/79

DEDICATION

Be it hereby known by these presents that the undersigned parties do hereby establish and acknowledge the accompanying plat as the official map and plat of VILLAGE PORT SUBDIVISION to the City of Hermiston, Umatilla County, Oregon, and that the undersigned owners of the land on accompanying plat do hereby dedicate to the use of the public forever the streets and avenues designated on said plat together with a 5.00 foot utility easement adjacent to said street and avenue rights of way.

Edwin E. Sheets
EDWIN E. SHEETS

Minnie K. Sheets
MINNIE K. SHEETS

STATE OF OREGON)SS
COUNTY OF UMATILLA)

Be it remembered that on this 13 day of October, 1976, personally appeared before me the above signed persons who are known to me to be the same persons who executed the above instrument and who acknowledged to me that they executed the same freely and voluntarily.

Thelma E. Owen
Notary Public for Oregon

My commission expires 4/9/79

APPROVALS

CITY OF HERMISTON PLANNING COMMISSION

The accompanying plat is hereby approved by resolution and adopted on this 14 day of FEBRUARY, 1977 and approval duly filed.

Samuel Cooper, Chairman *[Signature]*, Secretary

CITY ENGINEER

Approved this 14TH day of FEBRUARY, 1977.

Patrick D. Napothan, City Engineer

HERMISTON CITY COUNCIL

The accompanying plat is hereby approved by resolution and adopted on this 14 day of FEBRUARY, 1977 and approval duly filed.

L. P. Gray, Mayor

HERMISTON IRRIGATION DISTRICT

The accompanying plat is hereby approved by resolution and adopted on this 12 day of OCTOBER, 1976 and approval duly filed.

Hugh Thompson, Chairman

UMATILLA COUNTY ASSESSOR AND TAX COLLECTOR

I, James T. White, Sr. and I, D. L. Bratt, respectively Assessor and Tax Collector of Umatilla County, Oregon, each hereby certify that we have examined the tax records relative to the land covered by the accompanying plat, and that all monies due for state and county taxes and assessments that could now constitute a lien on said land have been paid and we hereby approve said plat, dated this 29 day of MARCH, 1977.

James T. White Sr. County Assessor *D. L. Bratt* County Tax Collector

UMATILLA COUNTY COMMISSION

This is to certify that the accompanying plat is approved for filing and placed in the record of town plats of Umatilla County, Oregon, by the undersigned by its order dated the 14 day of FEBRUARY, 1977, and recorded in the County Journal _____, page _____.

Frank L. Stead Chairman *Bubara Lynn* Commissioner *Jimb Whitson* Commissioner

UMATILLA COUNTY CLERK

ATTEST: I, Jesse M. Bell, County Clerk of Umatilla County, Oregon, do hereby certify that the above named were on the date of said order above specified and are now the duly qualified, elected, sworn and acting chairman and commissioners of said county; that the signatures are the genuine signatures thereof and the seal hereto affixed is the seal of my office.

Jesse M. Bell
County Clerk