

STATE OF OREGON. } 55
 COUNTY OF UMATILLA. }
 I, Jesse M. Bell, County Clerk, certify that
 this instrument was received and recorded
 on AUG 16, 1976
 at 4:10 o'clock P.M. in the record
 of Town Plat... of said County in
 Book Page
 11 1

Declaration of Covenants
 Roll 8... Page 1151...

WESTVIEW ESTATES

LOCATED IN THE SOUTH 1/2 OF THE SOUTH EAST 1/4 OF THE
 NORTH EAST 1/4 OF SECTION 9, T4N, R 28E. W. M.
 UMATILLA COUNTY, OREGON



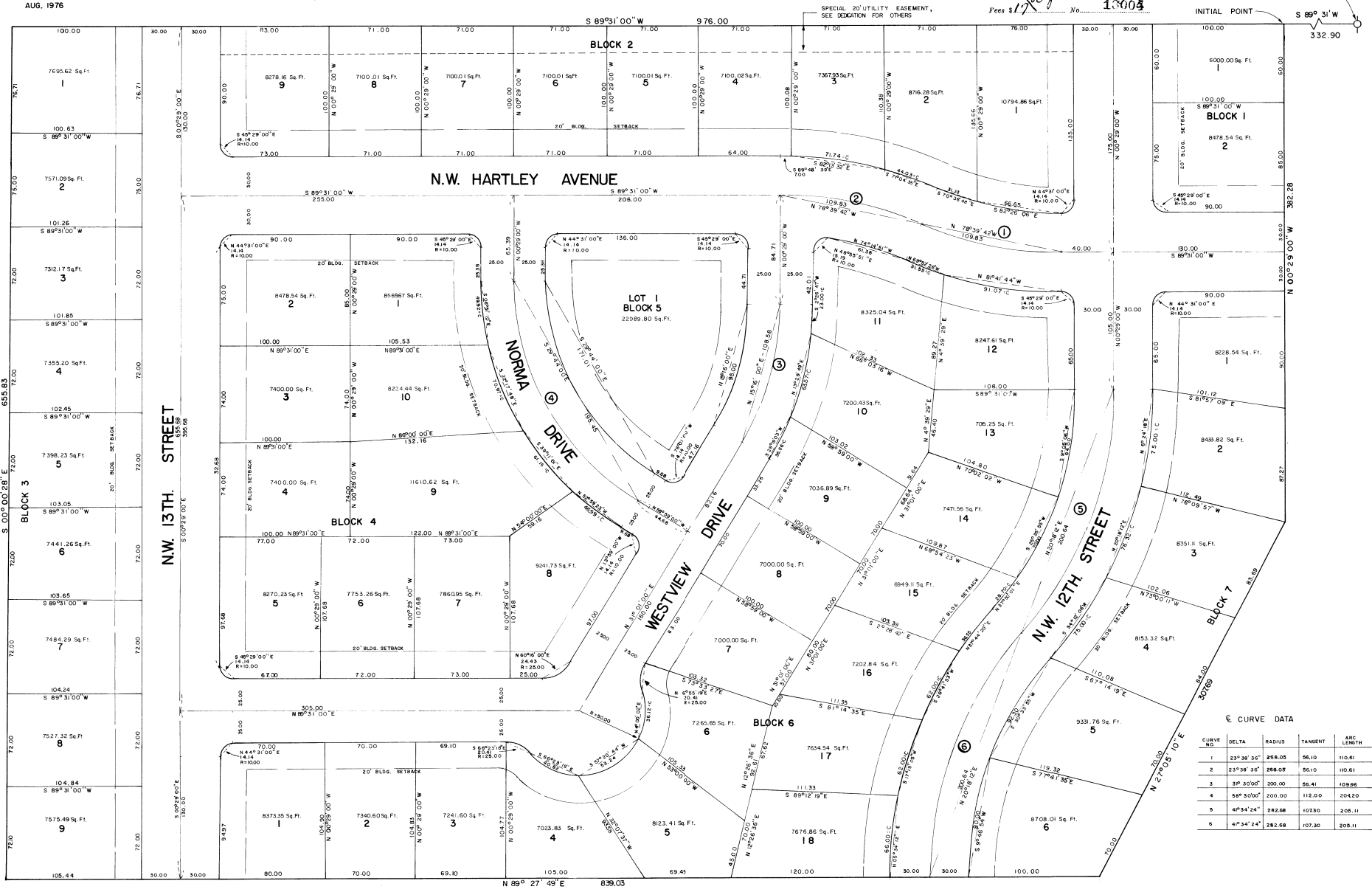
OWNER & DEVELOPER: NORPO DEVELOPMENT, INC.
 P.O. BOX 126
 HERMISTON, OREGON

ENGINEER: DONALD L. STAEBLER
 OF NORPO DEVELOPMENT INC.

JESSIE M. BELL
 County Clerk
 By *Betty Brown* Deputy
 Fees \$170.00 No. 13004

N.E. COR. S. 1/2, SE. 1/4, N.E. 1/4,
 SECTION 9, T4N, R 28E. W.M.

SCALE 1"=50'
 AUG. 1976



© CURVE DATA

CURVE NO.	DELTA	RADIUS	TANGENT	ARC LENGTH
1	23° 36' 34"	276.05	56.10	110.61
2	23° 36' 34"	286.05	56.10	109.61
3	3° 30' 00"	200.00	56.41	109.96
4	58° 30' 00"	200.00	112.00	204.20
5	4° 34' 24"	282.68	103.30	205.11
6	4° 34' 24"	282.68	107.30	205.11

WESTVIEW ESTATES

LOCATED IN THE SOUTH 1/2 OF THE SOUTH EAST 1/4 OF THE NORTH EAST 1/4 OF SECTION 9, T4N, R28E. W. M. UMATILLA COUNTY, OREGON

ENGINEERS CERTIFICATE

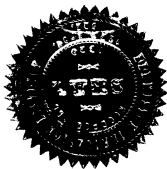
I, DONALD L. STAEBLER, BEING FIRST DULY SWORN, DO DEPOSE AND SAY THAT I AM A DULY REGISTERED ENGINEER OF THE STATE OF OREGON, AND THAT I HAVE CORRECTLY SURVEYED AND MARKED WITH LEGAL MONUMENTS THE LAND REPRESENTED ON THE ACCOMPANYING PLAT; AT THE INITIAL POINT I SET A 5/8" X 36" IRON ROD IN CONCRETE 6" BELOW THE SURFACE OF THE GROUND (6" DIA. X 32" CONCRETE) AND LOCATED S 89°31'00"W 332.90 FEET FROM THE N.E. CORNER OF THE S. 1/2 OF THE S.E. 1/4 OF THE N.E. 1/4 OF SECTION 9, T4N, R28E.W.M.; THENCE S 89°31'00"W A DISTANCE OF 976.00 FEET; THENCE S 0°28' E A DISTANCE OF 655.83 FEET; THENCE N 89°27'49"E ALONG A LINE MUTUALLY AGREED UPON AS THE PROPERTY LINE AS IT IS RECORDED IN ROLL 7 ON PAGE 836 OF THE UMATILLA COUNTY DEED RECORDS, A DISTANCE OF 839.03 FEET TO THE SW. CORNER OF THAT TRACT CONVEYED TO CLARA MAE WHITNEY AS IT IS RECORDED IN BOOK 338 ON PAGE 612 OF THE UMATILLA COUNTY DEED RECORDS; THENCE N 27°05'10"E ALONG THE WESTERLY LINE OF THE SAID WHITNEY TRACT A DISTANCE OF 307.69 FEET; THENCE N 0°29' W ALONG THE WEST BOUNDARY OF NORRA COMMERCIAL ADDITION N# 1 TO THE CITY OF HERMISTON, OREGON A DISTANCE OF 382.28 FEET TO THE INITIAL POINT.



Donald L. Staebler
DONALD L. STAEBLER

SUBSCRIBED AND SWORN TO BEFORE ME THIS 3rd DAY OF August, 1976

Mary Jo Hallbrook MY COMMISSION EXPIRES 5-16-80
NOTARY PUBLIC FOR OREGON



HERMISTON IRRIGATION DISTRICT

THE ACCOMPANYING PLAT IS HEREBY APPROVED BY RESOLUTION OF THE UNDERSIGNED'S BOARD OF DIRECTORS ADOPTED THIS 10th DAY OF AUGUST, 1976

Hugh Thompson CHAIRMAN *Paul A. Brewer* SECRETARY

CITY OF HERMISTON PLANNING COMMISSION

THE ACCOMPANYING PLAT IS HEREBY APPROVED BY RESOLUTION AND ADOPTED ON THIS 11th DAY OF AUGUST, 1976, AND APPROVAL DULY FILED.

Bernard W. Capen
CHAIRMAN

HERMISTON CITY COUNCIL

THE ACCOMPANYING PLAT IS HEREBY APPROVED BY RESOLUTION AND ADOPTED ON THIS 9th DAY OF AUGUST, 1976, AND APPROVAL DULY FILED.

L.P. Gray
MAYOR

CITY ENGINEER

APPROVED THIS 12th DAY OF AUGUST, 1976

Patrick D. Napabano
CITY ENGINEER

DEDICATION:

KNOW ALL MEN BY THESE PRESENTS: THAT THE UNDERSIGNED OWNERS OF THE LAND SHOWN ON THE ACCOMPANYING PLAT, DO HEREBY DEDICATE TO THE USE OF THE PUBLIC FOREVER THE STREETS AND AVENUES DESIGNATED ON SAID PLAT AND A 6' CONTINUOUS EASEMENT ON ALL LOTS, SAID EASEMENT BEING PARALLEL TO ALL LOT LINES, IS HEREBY DEDICATED BY THE DEDICATOR FOR SEWER, WATER, ELECTRICITY, LIGHT, GAS, TELEPHONE, TELEVISION AND OTHER UTILITIES AND FOR THEIR INSTALLATION AND MAINTENANCE, IRRESPECTIVE OF WHETHER THE SAME MAY BE INSTALLED BEFORE OR AFTER SALE BY THE DEDICATORS HEREIN. THAT THE UNDERSIGNED PARTIES DO HEREBY ESTABLISH AND ACKNOWLEDGE THE ACCOMPANYING PLAT AS THE OFFICIAL MAP AND PLAT OF WESTVIEW ESTATES, UMATILLA COUNTY, OREGON.



Jim M. Vickery
JIM M. VICKERY, PRESIDENT

Donald E. Neumann
DONALD E. NEUMANN, SECRETARY

FIRST FEDERAL SAVINGS AND LOAN ASSOCIATION OF PENDELTON, OREGON, A CORPORATION, FOR THE PURPOSE OF CONSENTING TO THIS DEDICATION HEREBY JOINS IN THE ABOVE DEDICATION. IN WITNESS WHEREOF, FIRST FEDERAL SAVINGS AND LOAN ASSOCIATION OF PENDELTON, OREGON, BY ITS AUTHORITY OF ITS BOARD OF DIRECTORS HAS CAUSED THESE PRESENTS TO BE SIGNED BY ITS PRESIDENT AND SECRETARY AND THE CORPORATE SEAL TO BE AFFIXED THIS 13th DAY OF AUGUST, 1976.



Robert W. Reese
PRESIDENT

Margene Thurman
SECRETARY

STATE OF OREGON) S.S.
COUNTY OF UMATILLA)

ON THIS 13th DAY OF AUGUST, 1976, BEFORE ME PERSONALLY APPEARED THE ABOVE NAMED ROBERT W. REESE, PRESIDENT AND MARGENE THURMAN, SECRETARY OF FIRST FEDERAL SAVINGS AND LOAN ASSOCIATION OF PENDELTON, OREGON, ACKNOWLEDGED THE ABOVE INSTRUMENT TO BE THE FREE ACT AND DEED OF SAID CORPORATION.

Kalvin B. Garton MY COMMISSION EXPIRES 9-8-78
NOTARY PUBLIC FOR OREGON

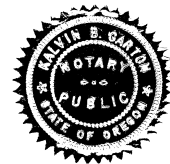
STATE OF OREGON) S.S.
COUNTY OF UMATILLA)

ON THIS 10th DAY OF AUGUST, 1976 PERSONALLY APPEARED JIM M. VICKERY AND DONALD E. NEUMANN WHO, BEING DULY SWORN, EACH FOR HIMSELF AND NOT ONE FOR THE OTHER DID SAY THAT THE FORMER IS THE PRESIDENT AND THE LATTER IS THE SECRETARY OF NORRA DEVELOPMENT, INC., AN OREGON CORPORATION AND THAT THE SEAL AFFIXED TO THE FOREGOING INSTRUMENT IS THE CORPORATE SEAL OF SAID CORPORATION AND SAID INSTRUMENT WAS SIGNED AND SEALED IN BEHALF OF SAID CORPORATION BY AUTHORITY OF ITS BOARD OF DIRECTORS AND THEY ACKNOWLEDGED SAID INSTRUMENT TO BE THEIR VOLUNTARY ACT AND DEEDS.



Mary Jo Hallbrook
NOTARY PUBLIC FOR OREGON

5-16-80
MY COMMISSION EXPIRES



UMATILLA COUNTY ASSESSOR AND TAX COLLECTOR

I, RODNEY W. ESSELTON AND I, D. L. BRATT, RESPECTIVELY ASSESSOR AND TAX COLLECTOR OF UMATILLA COUNTY, OREGON, EACH HEREBY CERTIFY THAT WE HAVE EXAMINED THE TAX RECORDS RELATIVE TO THE LAND COVERED BY THE ACCOMPANYING PLAT, AND THAT ALL MONIES DUE FOR STATE AND COUNTY TAXES AND ASSESSEMENTS THAT COULD NOW CONSTITUTE A LEIN ON SAID LAND HAVE BEEN PAID AND WE HEREBY APPROVE SAID PLAT, DATED THIS 16th DAY OF AUGUST, 1976

Rodney W. Esselton
COUNTY ASSESSOR

D. L. Bratt
COUNTY TAX COLLECTOR

UMATILLA COUNTY COMMISSION

THIS IS TO CERTIFY THAT THE ACCOMPANYING PLAT IS APPROVED FOR FILING AND PLACED IN THE RECORD OF TOWN PLATS OF UMATILLA COUNTY, OREGON, BY THE UNDERSIGNED BY ITS ORDER DATED THE 16th DAY OF AUGUST, 1976, AND RECORDED IN THE COUNTY JOURNAL _____, PAGE _____.

Frank K. Smith
CHAIRMAN

Barbara Lynch
COMMISSIONER

Raymond Brown
COMMISSIONER

UMATILLA COUNTY CLERK

ATTEST: I, JESSIE M. BELL, COUNTY CLERK OF UMATILLA COUNTY, OREGON DO HEREBY CERTIFY THAT THE ABOVE NAMED WERE ON THE DATE OF SAID ORDER ABOVE SPECIFIED AND ARE NOW THE DULY QUALIFIED, ELECTED, SWORN AND ACTING CHAIRMAN AND COMMISSIONERS OF SAID COUNTY; THAT THE ABOVE SIGNATURES ARE THE GENUINE SIGNATURES THEREOF AND THE SEAL HERETO AFFIXED IS THE SEAL OF MY OFFICE.



Jessie M. Bell
COUNTY CLERK