

STATE OF OREGON }
 COUNTY OF UMATILLA }
 I, Jessie M. Bell, County Clerk, certify that
 this instrument was recorded and recorded
 ON _____
 at _____ o'clock _____ M. in the record
 of _____ of said County in
 Book _____ Page _____

BOOK 10 PAGE 27

NORPA COMMERCIAL ADDITION No 1

LOCATED IN THE SOUTH 1/2 of the SE 1/4 of the NE 1/4 of
 SECTION 9, T4N, R28E, W.M.
 UMATILLA COUNTY, OREGON

JESSIE M. BELL
 County Clerk

By Betty Brown Deputy
 Fees \$10.00 No. 588405

DEDICATION:

KNOW ALL MEN BY THESE PRESENTS: THAT THE UNDERSIGNED OWNERS OF THE LAND SHOWN ON THE ACCOMPANYING PLAT, DO HEREBY DEDICATE TO THE USE OF THE PUBLIC FOREVER THE STREETS DESIGNATED ON SAID PLAT AND A 6' CONTINUOUS EASEMENT ON ALL LOTS, SAID EASEMENT BEING PARALLEL TO ALL LOT LINES, IS HEREBY DEDICATED BY THE DEDICATORS FOR SEWER, WATER, GAS, TELEPHONE, TELEVISION AND OTHER UTILITIES AND FOR THEIR INSTALLATION AND MAINTENANCE, IRRESPECTIVE OF WHETHER THE SAME MAY BE INSTALLED BEFORE OR AFTER SALE BY THE DEDICATORS HEREIN. THAT THE UNDERSIGNED PARTIES DO HEREBY ESTABLISH AND ACKNOWLEDGE THE ACCOMPANYING PLAT AS THE OFFICIAL MAP AND PLAT OF NORPA COMMERCIAL ADDITION No 1, UMATILLA COUNTY, OREGON.

Jim M. Vickery PRESIDENT
Donald E. Neumann SECRETARY

STATE OF OREGON)
 COUNTY OF UMATILLA) S.S.

ON THIS 3rd DAY OF April, 1976 PERSONALLY APPEARED JIM M. VICKERY AND DONALD E. NEUMANN WHO, BEING DULY SWORN, EACH FOR HIMSELF AND NOT ONE FOR THE OTHER DID SAY THAT THE FORMER IS THE PRESIDENT AND THE LATTER IS THE SECRETARY OF NORPA DEVELOPMENT, INC., AN OREGON CORPORATION AND THAT THE SEAL AFFIXED TO THE FOREGOING INSTRUMENT IS THE CORPORATE SEAL OF SAID CORPORATION AND SAID INSTRUMENT WAS SIGNED AND SEALED IN BEHALF OF SAID CORPORATION BY AUTHORITY OF IT'S BOARD OF DIRECTORS AND THEY ACKNOWLEDGED SAID INSTRUMENT TO BE THEIR VOLUNTARY ACTS AND DEEDS.

Betty Brown NOTARY PUBLIC FOR OREGON
 MY COMMISSION EXPIRES _____

UMATILLA COUNTY ASSESSOR AND TAX COLLECTOR

I, RODNEY W. ESSELTON AND I, D. L. BRATT, RESPECTIVELY ASSESSOR AND TAX COLLECTOR OF UMATILLA COUNTY, OREGON, EACH HEREBY CERTIFY THAT WE HAVE EXAMINED THE TAX RECORDS RELATIVE TO THE LAND COVERED BY THE ACCOMPANYING PLAT, AND THAT ALL MONIES DUE FOR STATE AND COUNTY TAXES AND ASSESSMENTS THAT COULD NOW CONSTITUTE A LEIN ON SAID LAND HAVE BEEN PAID AND WE HEREBY APPROVE SAID PLAT, DATED THIS 5th DAY OF April, 1976.

R.W. Esselton COUNTY ASSESSOR
D.L. Bratt COUNTY TAX COLLECTOR

UMATILLA COUNTY COMMISSION

THIS IS TO CERTIFY THAT THE ACCOMPANYING PLAT IS APPROVED FOR FILING AND PLACED IN THE RECORD OF TOWN PLATS OF UMATILLA COUNTY, OREGON, BY THE UNDERSIGNED BY ITS ORDER DATED THE 5th DAY OF April, 1976, AND RECORDED IN THE COUNTY JOURNAL _____, PAGE _____

Fred K. Stovall CHAIRMAN
Barbara Lynch COMMISSIONER
Raymond Brown COMMISSIONER

UMATILLA COUNTY CLERK

ATTEST: I, JESSIE M. BELL, COUNTY CLERK OF UMATILLA COUNTY, OREGON DO HEREBY CERTIFY THAT THE ABOVE NAMED WERE ON THE DATE OF SAID ORDER ABOVE SPECIFIED AND ARE NOW THE DULY QUALIFIED, ELECTED, SWORN AND ACTING CHAIRMAN AND COMMISSIONER OF SAID COUNTY; THAT THE ABOVE SIGNATURES ARE THE GENUINE SIGNATURES THEREOF AND THE SEAL HERETO AFFIXED IS THE SEAL OF MY OFFICE.

Jessie M. Bell
 COUNTY CLERK

ENGINEERS CERTIFICATE

I, DONALD L. STAEBLER, BEING FIRST DULY SWORN, DO DEPOSE AND SAY THAT I AM A DULY REGISTERED ENGINEER OF THE STATE OF OREGON, AND THAT I HAVE CORRECTLY SURVEYED AND MARKED WITH LEGAL MONUMENTS THE LAND REPRESENTED ON THE ACCOMPANYING PLAT; AT THE INITIAL POINT I SET A 5/8" x 36" IRON ROD IN CONCRETE 6" BELOW THE SURFACE OF THE GROUND (6" DIA. x 36" CONCRETE) AND LOCATED N89°31'00"W 332.90 FEET FROM THE NORTHEAST CORNER OF THE SOUTH 1/2 OF THE SOUTHEAST 1/4 OF THE NORTHEAST 1/4 OF SECTION 9, T4N, R28E, W.M. THENCE S00°29'00"W 392.28 FEET TO A POINT ON THE WESTERLY LINE OF THAT TRACT OF LAND CONVEYED TO CLARA MAE WHITNEY AS IT IS RECORDED IN BOOK 338 ON PAGE 612 OF THE UMATILLA COUNTY DEED RECORDS; THENCE N27°05'10"E ALONG THE WESTERLY LINE OF THE SAID WHITNEY TRACT 55.05 FEET TO THE NORTHWEST CORNER THEREOF; THENCE S84°45'50"E ALONG THE NORTHERLY LINE OF THE SAID WHITNEY TRACT 276.93 FEET TO A POINT ON THE WESTERLY RIGHT OF WAY LINE OF BUTTERCREEK ROAD ALSO KNOWN AS NW ELEVENTH STREET; THENCE N00°30'59"W ALONG THE SAID WESTERLY RIGHT OF WAY LINE AND PARALLEL TO THE EAST LINE OF THE SAID SECTION 9 A DISTANCE OF 217.85 FEET; THENCE S89°31'00"W 115.00 FEET; THENCE N00°30'59"W AND PARALLEL WITH THE EAST LINE OF THE SAID SECTION 9 A DISTANCE OF 145.00 FEET TO A POINT; THENCE S89°31'00"W 184.90 FEET TO THE INITIAL POINT.

Donald L. Staebler

Donald L. Staebler
 DONALD L. STAEBLER, P.E.

SUBSCRIBED AND SWORN TO BEFORE ME THIS 8th DAY OF March, 1976

Christine J. Halkhouse MY COMMISSION EXPIRES 6-9-77
 NOTARY PUBLIC FOR OREGON

HERMISTON IRRIGATION DISTRICT

THE ACCOMPANYING PLAT IS HEREBY APPROVED BY RESOLUTION OF THE UNDERSIGNED'S BOARD OF DIRECTORS, ADOPTED THIS 4th DAY OF March, 1976

Hugh Thompson CHAIRMAN
Christine A. Brewer SECRETARY

CITY OF HERMISTON PLANNING COMMISSION

THE ACCOMPANYING PLAT IS HEREBY APPROVED BY RESOLUTION AND ADOPTED ON THIS 5th DAY OF March, 1976, AND APPROVAL DULY FILED.

Reynold A. Pappas
 CHAIRMAN

HERMISTON CITY COUNCIL

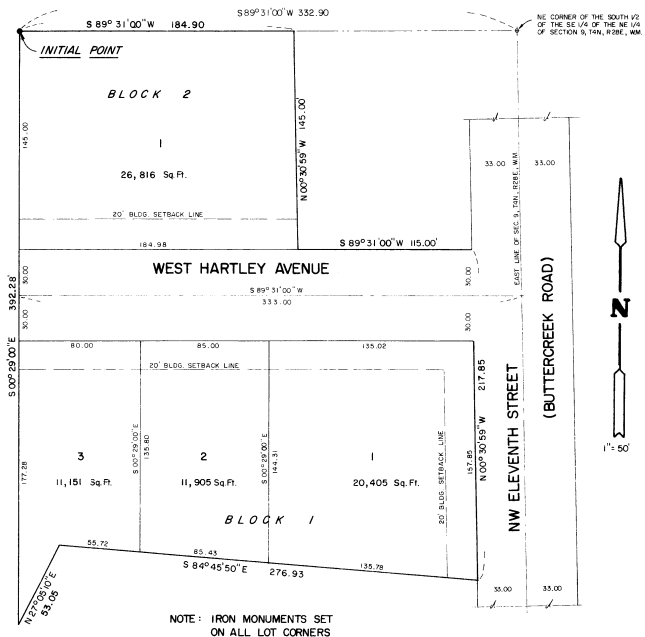
THE ACCOMPANYING PLAT IS HEREBY APPROVED BY RESOLUTION AND ADOPTED ON THIS 8th DAY OF MARCH, 1976, AND APPROVAL DULY FILED.

John P. Gray
 MAYOR

CITY ENGINEER

APPROVED THIS 8th DAY OF MARCH, 1976

Patrick D. Hays
 CITY ENGINEER



NOTE: IRON MONUMENTS SET ON ALL LOT CORNERS

OWNER & SUBDIVIDER:
 NORPA DEVELOPMENT, INC.
 HERMISTON, OREGON

