

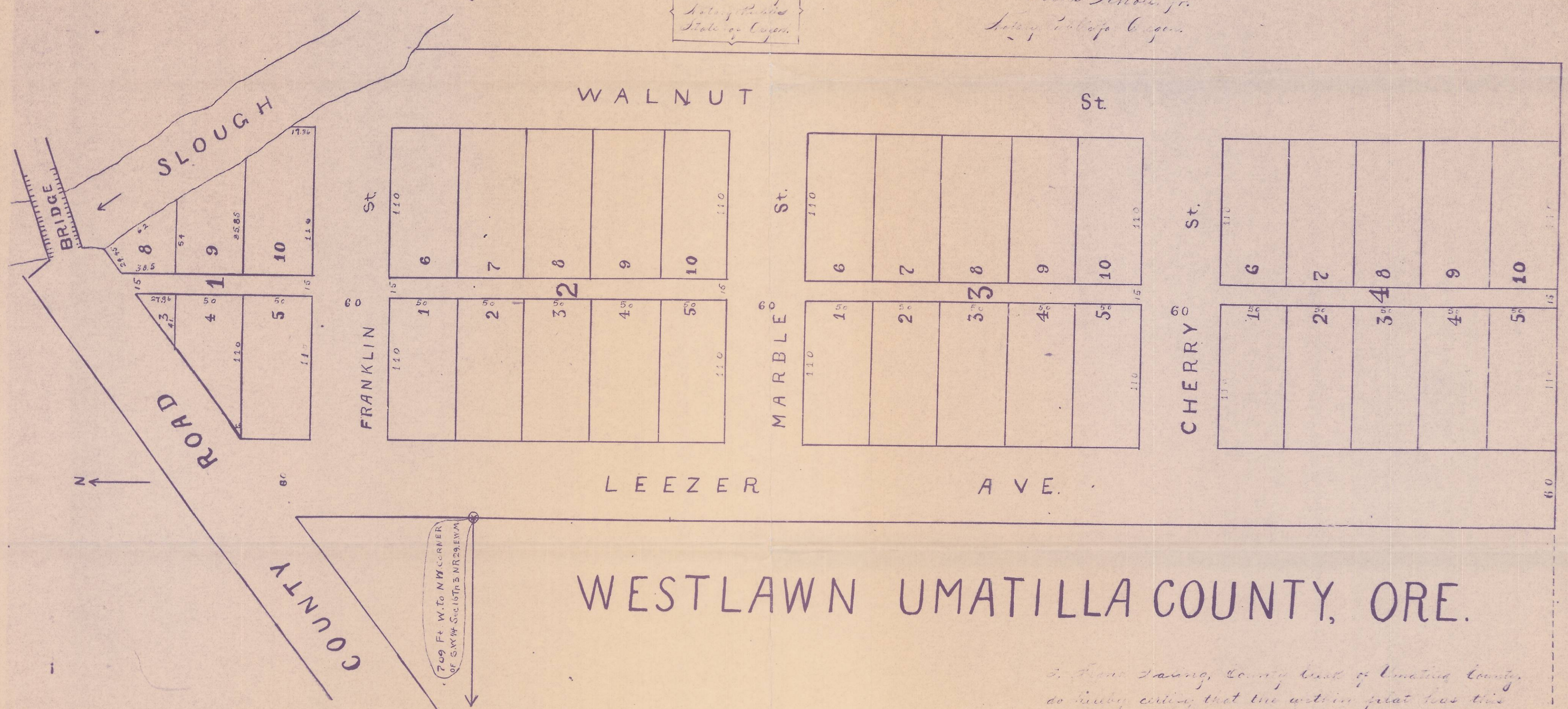
Know all men by these presents that we, J. H. Lewis and Anna Lewis, husband and wife, of Essex, Umatilla Co. State of Oregon, do hereby dedicate to the use of the public all the streets and alleys in Westlawn, as shown by the plat hereto attached and made a part of Westlawn. Westlawn is located in a part of lots the S. 1/4 of the S. 1/4 of the S. 1/4 and the S. 1/4 of the S. 1/4 of Section 36, Twp. 3, North Range 29, E. 1/4 W. and is a subset of Essex, Umatilla Co. Oregon.

Witness - J. D. Ballitt
 Lewis Scholze, Jr.
 Anna Lewis

Acknowledged before me this 15th day of June, 1905.

Louis Scholze, Jr.
 Notary Public
 State of Oregon

Louis Scholze, Jr.
 Notary Public
 State of Oregon



WESTLAWN UMATILLA COUNTY, ORE.

I, Frank Lansing, County Clerk of Umatilla County, do hereby certify that the within plat has this day been approved by the County Court and a County Clerk, dated this 19th day of June 1905.

Frank Lansing, Clerk
 By R. T. Brown, Deputy

County Court
 Umatilla County
 State of Oregon

RECEIVED BY
 Umatilla County Surveyor
 Date: 5/23/2012
 Recd By: S. Oles
 No.: 12-019-B

STATE OF OREGON, }
 County of Umatilla, } ss.
 This instrument was filed for record on
 the 22nd day of June, A.D. 1905
 at 2:20 o'clock P.M. and duly recorded
 in Vol. 2 of Plats
 Page 64
 By J. D. Ballitt, Recorder
 Fees \$5.00 No. 30432