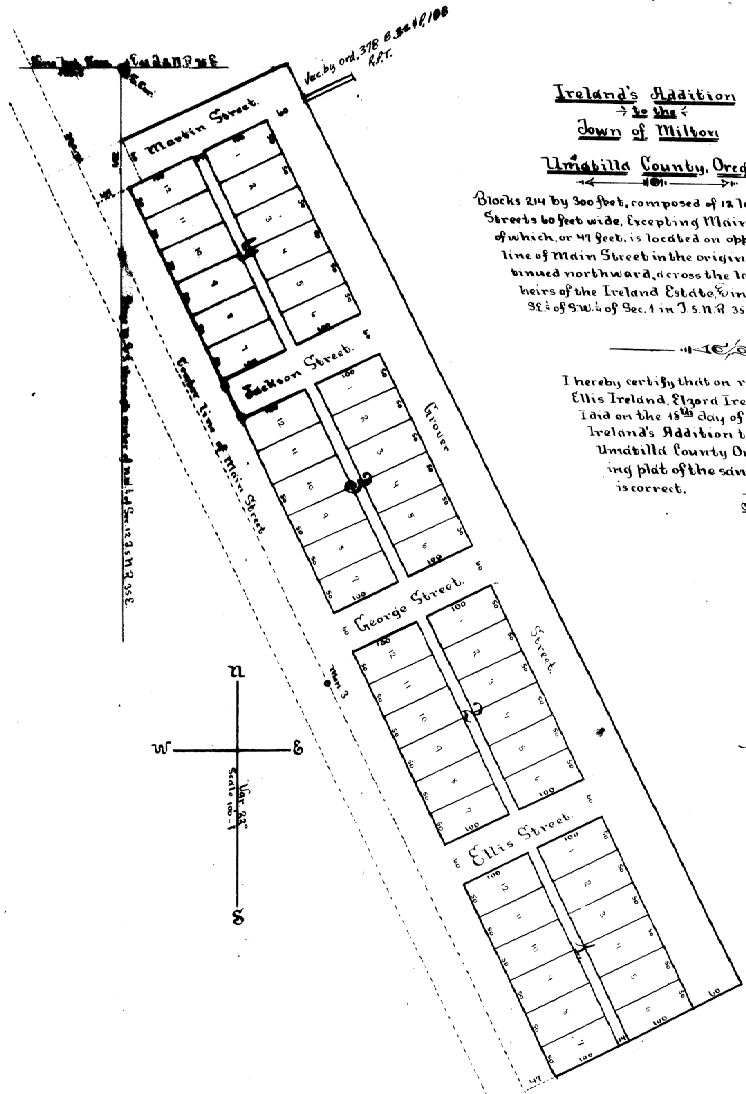


BK 1

110
p. 110



Ireland's Addition
to the
Town of Milton

Umatilla County, Oregon.

Blocks 214 by 300 feet, composed of 12 lots, 50 by 100 ft. each.
Streets 60 feet wide, excepting Main, 94 feet wide, one half
of which, or 47 feet, is located on opposite sides of the center
line of Main Street in the original town of Milton, con-
tinued northward, across the land belonging to the
heirs of the Ireland Estate, in NE 1/4 of NW 1/4 of Sec. 12, 1/4
SE 1/4 SW 1/4 of Sec. 1 in T. 5. N. R. 35 E. W. 11.

I hereby certify that on request of SE Ireland,
Ellis Ireland, Elgard Ireland & George Ireland
laid on the 15th day of April A. D. 1889, Survey
Ireland's Addition to the Town of Milton,
Umatilla County Oregon, & the accompany-
ing plat of the same, herewith submitted
is correct.

Jno. C. Arnold
Surveyor

Filed April 20th 1889.
G. A. Hartman, Clerk.