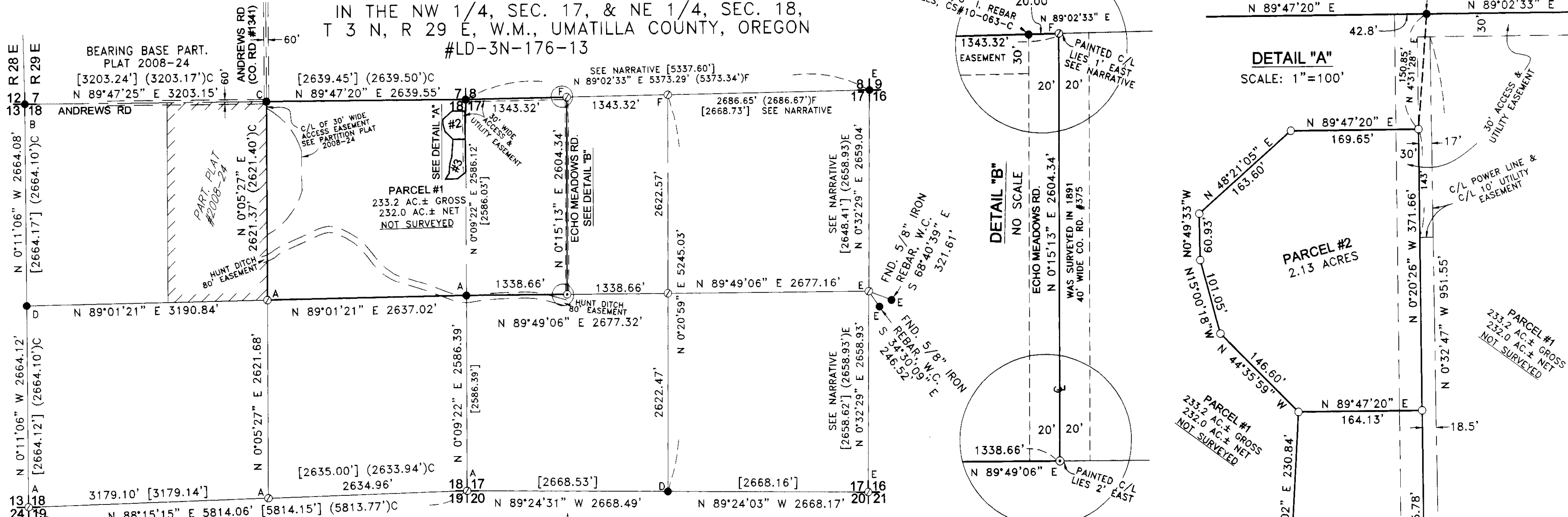


PARTITION PLAT 2013-09

IN THE NW 1/4, SEC. 17, & NE 1/4, SEC. 18,
T 3 N, R 29 E, W.M., UMATILLA COUNTY, OREGON
#LD-3N-176-13



APPROVALS:

UMATILLA COUNTY SURVEYOR

APPROVED THIS 30 DAY OF May, 2013

David H. Edwards
UMATILLA COUNTY SURVEYOR

WESTLAND IRRIGATION DISTRICT

APPROVED THIS 29 DAY OF April, 2013

Mike Wick
MANAGER

UMATILLA COUNTY PLANNING DEPARTMENT

APPROVED THIS 5th DAY OF June, 2013

W. Mabbett
UMATILLA COUNTY PLANNING DIRECTOR

UMATILLA COUNTY TAX COLLECTOR

TAXES ARE PAID IN FULL

APPROVED THIS 30 DAY OF May, 2013

Bettina Givens
UMATILLA COUNTY TAX COLLECTOR

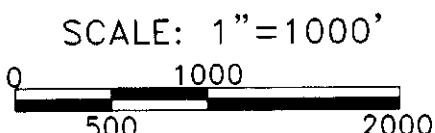
STATE OF OREGON,
COUNTY OF UMATILLA }
I certify that this instrument was received and recorded

ON June 5, 2013
at 3:15 o'clock P.m., in the record of
PLATS of said County.
YEAR NUMBER Slide
2013 09

OFFICE OF COUNTY RECORDS

By: ...Steve Churchill... Records Officer

Fees \$ 73.00 No. 2013-6060134



SURVEYOR'S CERTIFICATE:

I, G. DENNIS EDWARDS, AM A REGISTERED SURVEYOR OF THE STATE OF OREGON AND HAVE MARKED WITH PROPER MONUMENTS THE LAND SHOWN HEREON.

THE PURPOSE OF THIS PARTITION IS TO SEPARATE TWO HOMES FROM A FARMING OPERATION. I BASED THE BEARINGS ON MY PARTITION PLAT 2008-24. I COMPUTED THE LOCATION OF SOME SECTION AND 1/4 CORNERS FROM ENGLISH'S COUNTY SURVEY OF THIS TOWNSHIP (CS#11-38-C) EXCEPT FOR THE LINE COMMON TO SECTIONS 8 AND 17. FOR THAT LINE I USED HADDOCK'S CORNER AT THE NE COR. OF SECTION 17 (98-155-C) AND FOR THE 1/4 CORNER I USED THE COMPUTED LOCATION FROM MY PARTITION PLAT 2006-28. ENGLISH USED A MONUMENT APPROXIMATELY 37 FEET WESTERLY OF SAID NE CORNER AND SET A MONUMENT ABOUT 18 FEET WESTERLY OF THE QUARTER CORNER. ENGLISH'S W 1/16 CORNER WOULD FALL OVER 9' WEST OF THE C/L OF AS BUILT ECHO MEADOWS ROAD WHICH IS SUPPOSE TO RUN ALONG THE 1/16 TH LINE.

DESCRIPTION: THIS TRACT OF LAND IS DESCRIBED AS TRACTS 2 AND 3 IN A DEED TO JEFFRY AND CYNTHIA SPIKE ON REEL 350, PAGE 317 UMATILLA COUNTY DEED RECORDS AND IS DESCRIBED AS THE WEST HALF OF THE NW 1/4 OF SECTION 17 AND THE NE 1/4 OF SECTION 18, T 3 N, R 29 E, W.M., UMATILLA COUNTY, OREGON. EXCEPTING COUNTY ROAD RIGHT OF WAY.

RECEIVED BY
Umatilla County Surveyor
Date: 6/11/2013
Rec'd By: [Signature]
No.: 13-190-B

REGISTERED PROFESSIONAL LAND SURVEYOR

OREGON
JULY 16, 1971
G. DENNIS EDWARDS
9 5 1
RENEWS 12/31/2013

OWNER'S DECLARATION:

WE THE OWNERS OF THE HEREON DESCRIBED LAND, HEREBY DECLARE THAT WE HAVE CAUSED THIS PLAT TO BE PREPARED. WE ACKNOWLEDGE THE EASEMENTS AND ROADWAYS AS SHOWN. WE HEREBY DEDICATE AN EASEMENT FOR INGRESS AND EGRESS AND UTILITIES OVER A STRIP OF LAND 30 FEET IN WIDTH AND OVER A 50' RADIUS CUL-DE-SAC AS SHOWN ALONG THE NORTH LINE OF PARCEL 1 AND ALONG THE EAST LINE OF PARCELS 2 AND 3 FOR THE USE OF ALL THREE PARCELS.

WE ALSO DEDICATE A 10' WIDE UTILITY EASEMENT ALONG AN EXISTING OVER HEAD POWER LINE WHICH RUNS SOUTHERLY JUST EAST OF PARCELS 2 AND 3 FOR THE USE OF ALL THREE PARCELS.

WE ALSO DEDICATE AN EASEMENT FOR A WELL, PUMP HOUSE, AND WATER LINE EASEMENT FOR A JOINT USE AGREEMENT BETWEEN PARCELS 1 AND 3 FOR A WELL NEAR THE SOUTH LINE OF PARCEL 3.

Jeffrey C. Spike *Cynthia M. Spike*
JEFFREY C. SPIKE, OWNER CYNTHIA M. SPIKE, OWNER

STATE OF OREGON }
COUNTY OF UMATILLA }
BEFORE ME THIS 24 DAY OF May, 2013
APPEARED JEFFRY C. SPIKE, OWNER AND CYNTHIA M. SPIKE, OWNER AND ACKNOWLEDGED THE FOREGOING DECLARATION.

David Wm. Hadley
NOTARY PUBLIC FOR OREGON
DAVID W.M. HADLEY
COMMISSION NO. 443795
MY COMMISSION EXPIRES 12-22-13

- LEGEND:**
- FOUND 2 1/2" OR 2 3/8" BRASS CAP AS NOTED BELOW, UNLESS NOTED AS 5/8" IRON REBAR
 - A ● ENGLISH CS#11-38-C
 - B ● EDWARDS PARTITION PLAT 2006-13
 - C ● EDWARDS PARTITION PLAT 2008-24
 - D ● STAEBLER 1972
 - E ● HADDOCK CS#98-155-C
 - SET 5/8"X30" IRON REBAR WITH PLASTIC CAP #951
 - ⊙ SET RR SPIKE STAMPED 951
 - ⊕ COMPUTED LOCATION FROM ENGLISH CS#11-38-C
 - ⊖ COMPUTED LOCATION FROM HADDOCK CS#98-155-C
 - ⊗ COMPUTED LOCATION FROM EDWARDS PARTITION PLAT 2006-28
- (000) OF RECORD, FROM SURVEYS AS LABELED ABOVE
(000) OF RECORD, ENGLISH CS#11-38-C

DETAIL "A"
SCALE: 1"=100'

DETAIL "C"
SCALE: 1"=50'

THIS IS AN EXACT COPY: *G. Dennis Edwards*
G. DENNIS EDWARDS

JOB# S1301002
EDWARDS SURVEYING P.O. BOX 763
541-567-3336 HERMISTON, OREGON 97838
DRAWN BY JMC