

PARTITION PLAT FOR TIM WEIDERT

IN A PORTION OF THE SW 1/4 OF SECTION 20
AND A PORTION OF THE NW 1/4 OF SECTION 29
TOWNSHIP 3 NORTH, RANGE 32 EAST, W.M.
UMATILLA COUNTY, OREGON

PARTITION PLAT NO. 2012-18

BASIS OF BEARINGS

OREGON STATE PLANE COORDINATE SYSTEM, NORTH ZONE, NAD 83(2007) DERIVED FROM GLOBAL POSITIONING SYSTEM (GPS) TIES TO THE FOLLOWING NATIONAL GEODETIC SURVEY CONTROL POINTS:

PUBLISHED GRID COORDINATES (INTERNATIONAL SURVEY FEET)
PENDAIR: PID: RB1369 N. 742,612.59 E. 8,622,663.31 EPOCH DATE: 2007.00
PENDLETON: PID: RB1368 N. 733,999.71 E. 8,642,421.55 EPOCH DATE: 2007.00
SPARKS: PID: RB1372 N. 707,983.50 E. 8,636,719.10 EPOCH DATE:

THE DISTANCES SHOWN HEREON ARE GROUND. MULTIPLY THE GROUND DISTANCE BY THE COMBINED GRID FACTOR OF 1.0001275969 TO OBTAIN THE GRID DISTANCE.

CONTROL SPECIFICATIONS AND ACCURACY METHOD OF SURVEY AND EQUIPMENT USED:

THE CONTROL ESTABLISHED AND USED IN THIS SURVEY IS IN COMPLIANCE WITH THE FEDERAL GEODETIC CONTROL COMMITTEE'S "GEOMETRIC GEODETIC ACCURACY STANDARDS AND SPECIFICATIONS FOR USING GPS RELATIVE POSITIONING TECHNIQUES". SOME OF THE RECOVERED CORNERS, CONTROLLING CORNERS AND REESTABLISHED CORNERS SHOWN HEREON WERE TIED WITH TRIMBLE R8 GPS GEODETIC RECEIVERS USING REAL TIME KINEMATIC METHODS, CORNERS THAT WERE OBSTRUCTED BY BUILDINGS, TREES AND CANYONS WERE TIED AND SET WITH A TRIMBLE S6 DIGITAL ONE SECOND TOTAL STATION FROM ESTABLISHED GPS CONTROL POINTS. GPS CONTROL POINTS ESTABLISHED IN THIS SURVEY WERE VERIFIED BY ADDITIONAL OBSERVATIONS ON DIFFERENT DAYS.

LEGEND

- ()R- INDICATES RECORD DIMENSIONS, SEE SURVEY REFERENCE
- ⊙ INDICATES SECTION CORNER ANNOTATION, SEE SECTION CORNER NOTES ON SHEET 2
- CH CHAINS
- CO COUNTY
- GOV'T GOVERNMENT
- RD ROAD

SECTION CORNER SYMBOL LEGEND

- INDICATES FOUND AND ACCEPTED EVIDENCE OF ORIGINAL CORNER POSITION. REESTABLISHED OBLITERATED CORNER POSITION AND SET A 3-1/4" ALUMINUM CAP (STAMPED AS SHOWN ON SHEET 2) ON A 2-1/4" ALUMINUM PIPE. SEE LAND CORNER RECORD FILED CONCURRENTLY WITH THIS PARTITION PLAT
- INDICATES FOUND AND HELD BRASS CAP AS SHOWN IN SURVEY AS REFERENCED HEREON. SEE LAND CORNER RECORD FILED WITH THE UMATILLA COUNTY SURVEYORS OFFICE FOR COMPLETE CORNER AND MONUMENT DETAILS
- INDICATES COMPUTED POSITION ONLY, NO MONUMENT FOUND OR SET IN THIS SURVEY

RECORDING INFORMATION
UMATILLA COUNTY OFFICE OF RECORDS

STATE OF OREGON,
COUNTY OF UMATILLA }
I certify that this instrument was received and recorded
ON September 19, 2012
at 1:00 o'clock P.m., in the record of
PLATS of said County.
YEAR NUMBER Slide
2012 18

I CERTIFY THIS IS AN EXACT COPY OF PARTITION PLAT NO. 2012-18

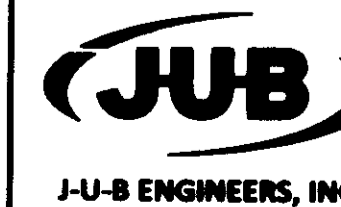
John J. Shea
JOHN J. SHEA, PROFESSIONAL LAND SURVEYOR
REGISTRATION NO. 2751

RECEIVED BY
Umatilla County Surveyor
Date: 10/4/2012
Rec'd By: J. Des
No.: 12-126-B

OFFICE OF COUNTY RECORDS
By: JEAN HEMPHILL, Records Officer
Fees \$ 73.00 No. 2012-5960289

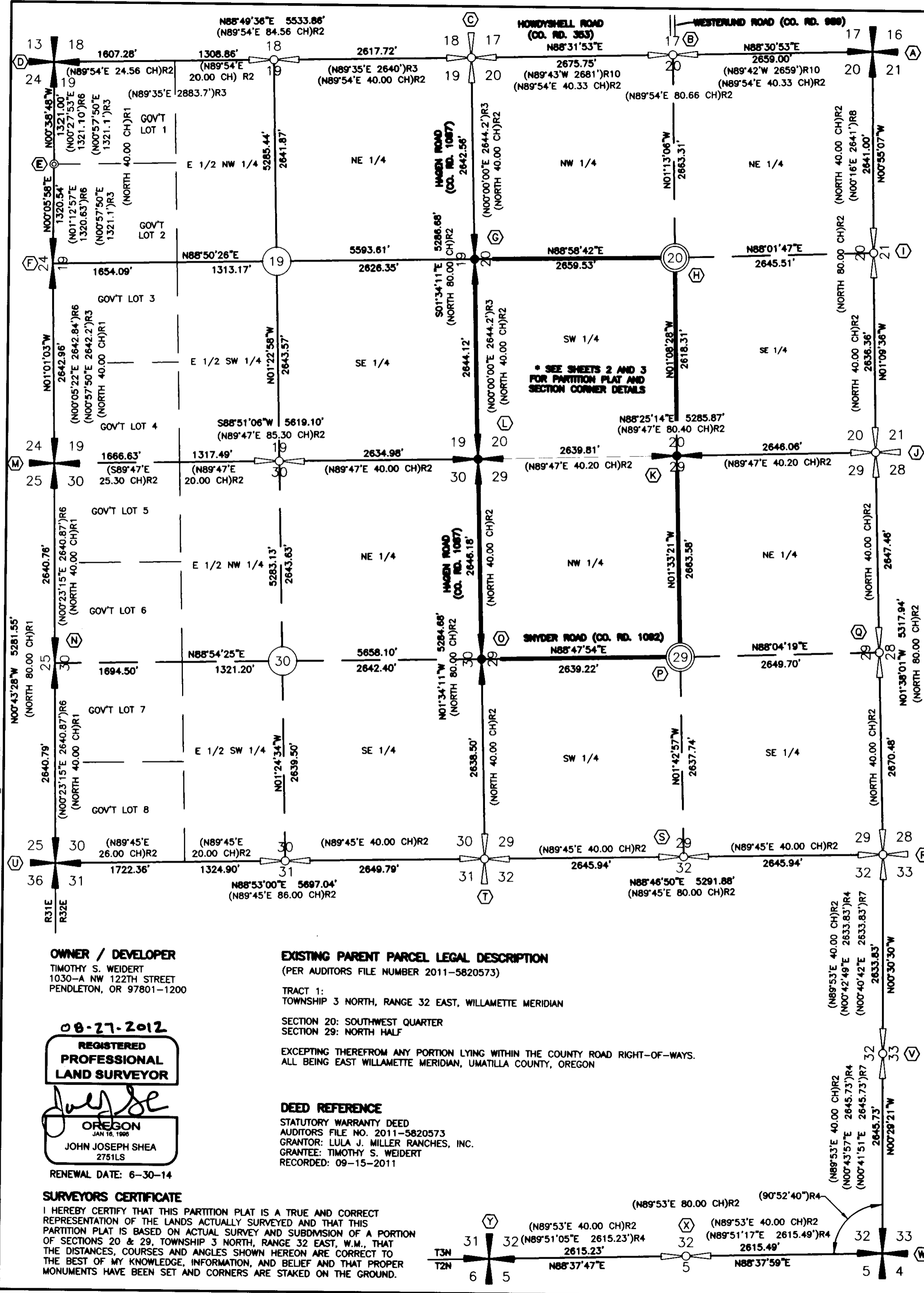
PARTITION PLAT

IN A PORTION OF THE SW1/4 OF SECTION 20 AND A
PORTION OF THE NW 1/4 OF SECTION 29, T3N, R32E, W.M.
UMATILLA COUNTY, OREGON



J-U-B ENGINEERS, INC.
2810 W. CLEARWATER, STE. 201
KENNEWICK, WA 99336
PHONE: 509-783-2144

CALC: JJS DWG: JJS CHK: JJS SHEET 1 OF 4
DATE: AUGUST 27, 2012 PRJ.NO. 30-11-049



OWNER / DEVELOPER
TIMOTHY S. WEIDERT
1030-A NW 122TH STREET
PENDLETON, OR 97801-1200

08-27-2012
REGISTERED
PROFESSIONAL
LAND SURVEYOR

John J. Shea
OREGON
JAN 16, 1990
JOHN JOSEPH SHEA
2751LS
RENEWAL DATE: 6-30-14

SURVEYORS CERTIFICATE

I HEREBY CERTIFY THAT THIS PARTITION PLAT IS A TRUE AND CORRECT REPRESENTATION OF THE LANDS ACTUALLY SURVEYED AND THAT THIS PARTITION PLAT IS BASED ON ACTUAL SURVEY AND SUBDIVISION OF A PORTION OF SECTIONS 20 & 29, TOWNSHIP 3 NORTH, RANGE 32 EAST, W.M., THAT THE DISTANCES, COURSES AND ANGLES SHOWN HEREON ARE CORRECT TO THE BEST OF MY KNOWLEDGE, INFORMATION, AND BELIEF AND THAT PROPER MONUMENTS HAVE BEEN SET AND CORNERS ARE STAKED ON THE GROUND.

EXISTING PARENT PARCEL LEGAL DESCRIPTION

(PER AUDITORS FILE NUMBER 2011-5820573)
TRACT 1:
TOWNSHIP 3 NORTH, RANGE 32 EAST, WILLAMETTE MERIDIAN

SECTION 20: SOUTH-WEST QUARTER
SECTION 29: NORTH HALF

EXCEPTING THEREFROM ANY PORTION LYING WITHIN THE COUNTY ROAD RIGHT-OF-WAYS. ALL BEING EAST WILLAMETTE MERIDIAN, UMATILLA COUNTY, OREGON

DEED REFERENCE

STATUTORY WARRANTY DEED
AUDITORS FILE NO. 2011-5820573
GRANTOR: LULA J. MILLER RANCHES, INC.
GRANTEE: TIMOTHY S. WEIDERT
RECORDED: 09-15-2011

SECTION CORNER NOTES & MONUMENT DESCRIPTIONS

(A) NORTHEAST CORNER SECTION 20, T3N, R32E, W.M. ACCEPTED CORNER. FOUND IRON PIPE WITH 2-3/8" BRASS CAP SET IN SURVEY REFERENCE NO. 8, SEE LAND CORNER RECORD 04-114-B. BRASS CAP IS 1.5' BELOW GROUND SURFACE AT EAST SIDE OF OLD FENCE POST, VISITED 10-19-2011.

(J) SOUTHEAST CORNER SECTION 20, T3N, R32E, W.M. ACCEPTED CORNER. HELD LONE RAILROAD TIE FENCE POST AT THE INTERSECTION OF FIELD LINES NORTH AND WEST. NO NEW MONUMENT SET IN THIS SURVEY, FENCE POST AND FIELD LINES VISITED ON 10-20-2011.

(P) CENTER 1/4 CORNER SECTION 29, T3N, R32E, W.M. INDICATES FOUND AND ACCEPTED EVIDENCE OF ORIGINAL CORNER POSITION, HELD THE CENTERLINE OF SNYDER ROAD AS THE EAST-WEST CENTERLINE OF SECTION 29, HELD A FOUND CONCRETE FENCE POST SOUTH OF SNYDER ROAD AS A POINT ON THE NORTH-SOUTH CENTERLINE OF SECTION 29, HELD THE INTERSECTION OF THE CENTERLINE OF SNYDER ROAD AND A LINE FROM SAID CONCRETE FENCE POST NORTH TO THE INTERSECTION OF THE NORTH AND EAST FIELD LINE AT THE NORTH 1/4 CORNER OF SECTION 29. REESTABLISHED OBLITERATED CORNER POSITION AND SET A 3-1/4" ALUMINUM CAP (STAMPED AS SHOWN BELOW) ON A 2-1/4" x 18" ALUMINUM PIPE WITH DEEP-1 MAGNET SET IN CONCRETE, BURIED 15" BELOW GRAVEL ROAD SURFACE. SEE LAND CORNER RECORD FILED CONCURRENTLY WITH THIS PARTITION PLAT, MONUMENT AND REFERENCE OBJECTS SET 07-09-2012

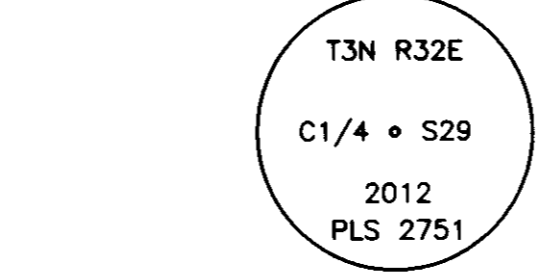
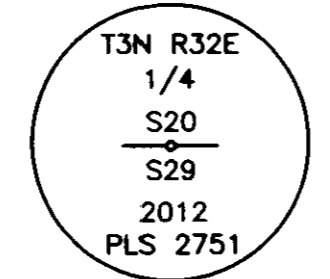
PARTITION PLAT FOR TIM WEIDERT IN A PORTION OF THE SW 1/4 OF SECTION 20 AND A PORTION OF THE NW 1/4 OF SECTION 29 TOWNSHIP 3 NORTH, RANGE 32 EAST, W.M. UMATILLA COUNTY, OREGON

PARTITION PLAT NO. 2012-18

(B) NORTH 1/4 CORNER SECTION 20, T3N, R32E, W.M. CALCULATED CORNER. CORNER OBLITERATED, HELD THE INTERSECTION OF THE CENTERLINE OF HOWDYSHHELL ROAD (CO. RD. 1096) TO THE WEST AND CENTERLINE OF WESTERSUND ROAD (CO. RD. 989) TO THE NORTH AS SHOWN IN SURVEY REFERENCE NO. 8. NO MONUMENT FOUND OR SET IN THIS SURVEY, FIELD VERIFIED ROAD CENTERLINE INTERSECTION ON 10-19-2011.

(K) SOUTH 1/4 CORNER SECTION 20, T3N, R32E, W.M. INDICATES FOUND AND ACCEPTED EVIDENCE OF ORIGINAL CORNER POSITION, HELD INTERSECTION OF FIELD LINES NORTH AND EAST. REESTABLISHED OBLITERATED CORNER POSITION AND SET A 3-1/4" ALUMINUM CAP (STAMPED AS SHOWN BELOW) ON A 2-1/4" x 18" ALUMINUM PIPE WITH DEEP-1 MAGNET SET IN CONCRETE, BURIED 18" BELOW GROUND SURFACE. SEE LAND CORNER RECORD FILED CONCURRENTLY WITH THIS PARTITION PLAT, MONUMENT AND REFERENCE OBJECTS SET 07-02-2012

(C) NORTHWEST CORNER SECTION 20, T3N, R32E, W.M. CALCULATED CORNER. CORNER OBLITERATED, HELD THE INTERSECTION OF THE CENTERLINE OF HOWDYSHHELL ROAD (CO. RD. 1096) TO THE EAST AND THE CENTERLINE OF HAGEN ROAD (CO. RD. 1087) TO THE SOUTH AS SHOWN IN SURVEY REFERENCE NO. 8. NO MONUMENT FOUND OR SET IN THIS SURVEY, FIELD VERIFIED ROAD CENTERLINE INTERSECTION ON 10-19-2011.



(Y) SOUTHWEST CORNER SECTION 32, T3N, R32E, W.M. ACCEPTED CORNER. FOUND IRON PIPE WITH 2-1/2" BRASS CAP AS SHOWN IN SURVEY REFERENCE NO. 4, NO LAND CORNER RECORD FOUND, VISITED 10-20-2011

THIS SURVEY WAS PREPARED AT THE REQUEST OF TIM WEIDERT IN OCTOBER 2011. THE PURPOSE OF THIS SURVEY WAS TO PREPARE A 3-LOT PARTITION PLAT IN THE SOUTHWEST QUARTER OF SECTION 20 AND THE NORTHWEST QUARTER OF SECTION 29, TOWNSHIP 3 NORTH, RANGE 32 EAST OF THE WILLAMETTE MERIDIAN, UMATILLA COUNTY, OREGON. PRELIMINARY FIELD WORK WAS PERFORMED ON OCTOBER 19 & 20, 2011 BY STEVEN DAY, JAKE DAY AND JOHN J. SHEA, EQUIPMENT USED IN THIS SURVEY WAS A TRIMBLE 5800 GEODETIC GPS RECEIVER OPERATED IN REAL TIME KINEMATIC MODE AND A ONE-SECOND TRIMBLE S8 ROBOTIC TOTAL STATION BOTH UTILIZING ELECTRONIC DATA COLLECTORS. PARTITION PLAT CORNER MONUMENTS WERE SET ON JULY 02, 2012 BY STEVEN DAY AND FELIPE HERNANDEZ USING A COMBINATION OF THE AFOREMENTIONED EQUIPMENT.

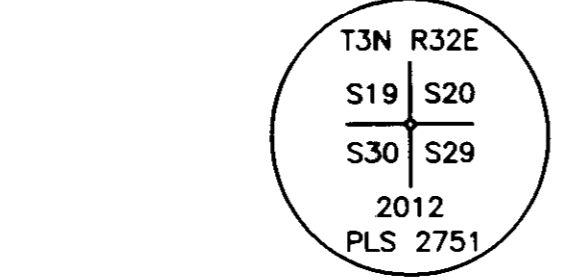
(D) NORTHWEST CORNER SECTION 19, T3N, R32E, W.M. ACCEPTED CORNER. FOUND IRON PIPE WITH 2-3/8" BRASS CAP AS SET IN SURVEY REFERENCE NO. 6, SEE LAND CORNER RECORD 06-462-C. BRASS CAP IS 1.2' BELOW GROUND SURFACE, VISITED 10-19-2011.

(L) SOUTHWEST CORNER SECTION 20, T3N, R32E, W.M. INDICATES FOUND AND ACCEPTED EVIDENCE OF ORIGINAL CORNER POSITION, HELD CENTERLINE OF HAGEN ROAD (SEE ROAD ESTABLISHMENT) AS THE WEST LINE OF SECTION 20, HELD A LINE FROM SOUTHEAST CORNER OF SECTION 20 TO SOUTH 1/4 CORNER OF SECTION 20 AND EXTENDED SAID LINE WESTERLY TO ITS INTERSECTION WITH THE NORTH-SOUTH CENTERLINE OF HAGEN ROAD. REESTABLISHED OBLITERATED CORNER POSITION AND SET A 3-1/4" ALUMINUM CAP (STAMPED AS SHOWN BELOW) ON A 2-1/4" x 12" ALUMINUM PIPE WITH DEEP-1 MAGNET SET IN CONCRETE, BURIED 6" BELOW GRAVEL ROAD SURFACE. SEE LAND CORNER RECORD FILED CONCURRENTLY WITH THIS PARTITION PLAT, MONUMENT AND REFERENCE OBJECTS SET 07-02-2012

(Q) EAST 1/4 CORNER SECTION 29, T3N, R32E, W.M. CALCULATED POSITION. CORNER OBLITERATED. HELD THE CENTERLINE OF SNYDER ROAD AS THE EAST-WEST CENTERLINE OF SECTION 29, HELD A LINE BETWEEN THE FOUND FENCE POST AT THE NORTHEAST CORNER OF SECTION 29 AND THE CALCULATED POSITION OF THE SOUTHEAST CORNER OF SECTION 29 AS SHOWN IN SURVEY REFERENCE NO. 4 AS THE EAST LINE OF THE SOUTHEAST QUARTER OF SECTION 29, CALCULATED THE EAST QUARTER CORNER POSITION BY PROPORTIONATE MEASUREMENT BASED ON GLO PLAT. NO MONUMENT FOUND OR SET IN THIS SURVEY, FIELD TIES TO SNYDER ROAD WERE MADE ON 10-20-2011

RESEARCH INTO THE ESTABLISHMENT OF TOWNSHIP 32 EAST SHOWS THAT THE TOWNSHIP WAS SURVEYED UNDER TWO SEPARATE CONTRACTS ISSUED BY THE GENERAL LAND OFFICE BY ORDER OF THE SURVEYOR GENERAL. THE PERMETER TOWNSHIP LINES WERE SURVEYED UNDER CONTRACT NUMBER 100, FIELD WORK WAS PERFORMED UNDER THE DIRECTION OF DEPUTY SURVEYOR, D.S. PAYNE IN AUGUST OF 1861, THE SUBSEQUENT TOWNSHIP SUBDIVISION WAS PERFORMED UNDER CONTRACT NUMBER 107, FIELD WORK WAS PERFORMED UNDER THE DIRECTION OF DEPUTY SURVEYOR, DANIEL CHAPLUN IN SEPTEMBER OF 1864.

(E) WEST 1/16 CORNER SECTION 19, T3N, R32E, W.M. ACCEPTED CORNER. FOUND 1" IRON PIPE AS SET IN SURVEY REFERENCE NO. 3 AND SHOWN IN SURVEY REFERENCE NO. 8. IRON PIPE IS 2.2' BELOW GROUND SURFACE, VISITED 10-19-2011.



(R) SOUTHEAST CORNER SECTION 29, T3N, R32E, W.M. CALCULATED POSITION. CORNER OBLITERATED. HELD THE CALCULATED POSITION OF THE SOUTHEAST CORNER OF SECTION 29 AS SHOWN IN SURVEY REFERENCE NO. 4, BASED ON TIES TO FOUND MONUMENTS AT THE SOUTHEAST CORNER AND SOUTHWEST CORNER OF SECTION 32. NO MONUMENT FOUND OR SET IN THIS SURVEY, SECTION 32 MONUMENTS VISITED 10-20-2011

ACCORDING TO THE OFFICIAL TRANSCRIBED FIELD NOTES FOR BOTH SURVEY CONTRACTS MOST CORNER MONUMENTATION CONSISTED OF POSTS, CHARRED STAKES, TRENCHES, PITS, ETC. RESEARCH AT THE UMATILLA COUNTY SURVEYORS OFFICE PRODUCED COPIES OF FIELD NOTES AND UNDATED SURVEY DRAWINGS SHOWING RETRACEMENT SURVEYS MADE BY THE OFFICE OF THE UMATILLA COUNTY SURVEYOR IN WHICH THEY SHOW FINDING THE ORIGINAL POSTS, CHARRED STAKES AND OTHER EVIDENCE OF THE ORIGINAL CORNER MONUMENTATION, ACCORDING TO THE NOTES AND DRAWINGS THE COUNTY SURVEYOR PERPETUATED THE CORNER LOCATION BY PLACING STONES. VERY FEW SURVEYS HAVE BEEN MADE IN THE TOWNSHIP SINCE THE ORIGINAL GENERAL LAND OFFICE SURVEYS AND THE LATER RETRACEMENT SURVEYS BY THE UMATILLA COUNTY SURVEYOR. THE TOWNSHIP IS MADE UP OF IN LARGE PART BY A COMBINATION OF MISCELLANEOUS FARMLAND, DESERT AND COUNTY ROADS. UMATILLA COUNTY ROAD ESTABLISHMENT RECORDS SHOWN THAT MOST OF THESE ROADS WERE ESTABLISHED ALONG SECTION LINES. AS A RESULT OF THE EXTENSIVE FARMING AND ROAD CONSTRUCTION WITHIN THE TOWNSHIP MOST SECTION CORNERS MONUMENTS HAVE BEEN OBLITERATED. MODERN DAY SURVEYS WITHIN THE TOWNSHIP HAVE RELIED ALMOST EXCLUSIVELY ON THE LOCATION OF AS-CONSTRUCTED COUNTY ROADS, FARM FIELD CULTIVATION LINES, FARM BERM LINES (AN INDICATOR OF AN ORIGINAL FENCE LINE), LINES OF POSSESSION AND OCCUPATION AS THE BEST REMAINING EVIDENCE OF THE ORIGINAL CORNER LOCATIONS. THIS SURVEY SHALL FOLLOW THE SAME METHODOLOGY FOR THE RE-ESTABLISHMENT OF OBLITERATED SECTION CORNERS.

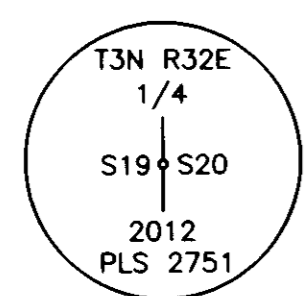
(F) WEST 1/4 CORNER SECTION 19, T3N, R32E, W.M. ACCEPTED CORNER. FOUND IRON PIPE WITH 2-3/8" BRASS CAP AS SET IN SURVEY REFERENCE NO. 6, SEE LAND CORNER RECORD 06-462-C. BRASS CAP IS AT GROUND SURFACE, 0.7' SW OF LONE POWER POLE, VISITED 10-19-2011.

(M) NORTHWEST CORNER SECTION 30, T3N, R32E, W.M. ACCEPTED CORNER. FOUND IRON PIPE WITH 2-3/8" BRASS CAP AS SET IN SURVEY REFERENCE NO. 6, SEE LAND CORNER RECORD 06-462-C. BRASS CAP IS 1.3' BELOW GROUND SURFACE, VISITED 10-19-2011.

(S) SOUTH 1/4 CORNER SECTION 29, T3N, R32E, W.M. CALCULATED POSITION. CORNER OBLITERATED. HELD LINE BETWEEN THE CALCULATED POSITIONS OF THE SOUTHEAST CORNER AND THE SOUTHWEST CORNER OF SECTION 29. CALCULATED THE SOUTH QUARTER CORNER BY PROPORTIONATE MEASUREMENT BASED ON GLO PLAT. NO MONUMENT FOUND OR SET IN THIS SURVEY

WE BEGAN THE SURVEY BY LOCATING EXISTING MONUMENTATION ALONG THE WEST AND SOUTH LINES OF THE TOWNSHIP AS WELL AS INTERIOR SECTION CORNER MONUMENTS AND LOCAL CORNER MONUMENTS AS SET IN RECENT SURVEYS. WE ALSO MADE TIES TO ALL COUNTY ROAD CENTERLINES, FIELD LINES, FIELD BERMS AND FENCES WITHIN ONE MILE OF THE PROJECT SITE AND COMPARED THE RELATIVE DISTANCES BETWEEN THESE POSSESSION AND OCCUPATION LINES WITH THE DISTANCES SHOWN ON THE ORIGINAL GENERAL LAND OFFICE SURVEYS AND SUBSEQUENT SURVEYS, THE RELATIONSHIP OF DISTANCES WAS ACCEPTABLE AND I HELD THE AFOREMENTIONED LINES AS THE BEST REMAINING EVIDENCE OF THE ORIGINAL CORNER MONUMENT LOCATIONS. SOME CORNER POSITIONS WERE ESTABLISHED USING PROPORTIONATE MEASUREMENT.

(G) WEST 1/4 CORNER SECTION 20, T3N, R32E, W.M. INDICATES FOUND AND ACCEPTED EVIDENCE OF ORIGINAL CORNER POSITION, HELD CENTERLINE OF HAGEN ROAD AS THE WEST LINE OF SECTIONS 20 & 29. REESTABLISHED OBLITERATED CORNER POSITION AND SET A 3-1/4" ALUMINUM CAP (STAMPED AS SHOWN BELOW) ON A 2-1/4" x 12" ALUMINUM PIPE WITH DEEP-1 MAGNET SET IN CONCRETE, BURIED 6" BELOW GRAVEL ROAD SURFACE. SEE LAND CORNER RECORD FILED CONCURRENTLY WITH THIS PARTITION PLAT, MONUMENT AND REFERENCE OBJECTS SET 07-02-2012



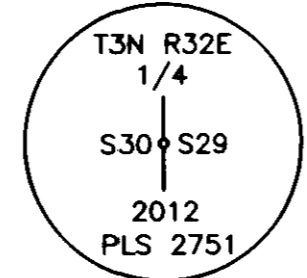
(N) WEST 1/4 CORNER SECTION 30, T3N, R32E, W.M. ACCEPTED CORNER. FOUND IRON PIPE WITH 2-3/8" BRASS CAP AS SET IN SURVEY REFERENCE NO. 6, SEE LAND CORNER RECORD 06-462-C. BRASS CAP IS 1.3' BELOW GROUND SURFACE, VISITED 10-19-2011.

(T) SOUTHWEST CORNER SECTION 29, T3N, R32E, W.M. CALCULATED POSITION. CORNER OBLITERATED. CALCULATED POSITION PER GLO PLAT DATA, HELD THE FOUND MONUMENT AT THE SOUTHWEST CORNER OF SECTION 30 AND THE CALCULATED POSITION OF THE SOUTHEAST CORNER OF SECTION 29. CALCULATED THE SOUTHWEST CORNER BY PROPORTIONATE MEASUREMENT. NO MONUMENT FOUND OR SET IN THIS SURVEY

SHEET 1 OF THIS PARTITION PLAT SHOWS THE SECTION SUBDIVISION AND MAKES REFERENCE TO EVIDENCE FOUND AND USED AS WELL AS MONUMENTS THAT WERE SET IN THIS SURVEY. SHEET 2 SHOWS THE ACTUAL PARTITION OF THE SUBJECT PARCEL INTO 3 PARCELS AND SHEET 3 INCLUDES THE NEW LEGAL DESCRIPTIONS FOR ALL 3 PARCELS, DIAGRAMS OF NEW SECTION CORNER BRASS CAP MONUMENTS WITH STAMPING, AS WELL AS COUNTY APPROVAL SIGNATURE BLOCKS.

(H) CENTER 1/4 CORNER SECTION 20, T3N, R32E, W.M. INDICATES FOUND AND ACCEPTED EVIDENCE OF ORIGINAL CORNER POSITION, HELD LONE RAILROAD TIE FENCE POST IN EAST-WEST & SOUTH FIELD LINES, FENCE POST AND FIELD LINES VERIFIED ON 10-20-2011. REESTABLISHED OBLITERATED CORNER POSITION AND SET A 3-1/4" ALUMINUM CAP (STAMPED AS SHOWN BELOW) ON A 2-1/4" x 18" ALUMINUM PIPE WITH DEEP-1 MAGNET SET IN CONCRETE, SET FLUSH WITH GROUND SURFACE. SEE LAND CORNER RECORD FILED CONCURRENTLY WITH THIS PARTITION PLAT, MONUMENT AND REFERENCE OBJECTS SET 07-02-2012

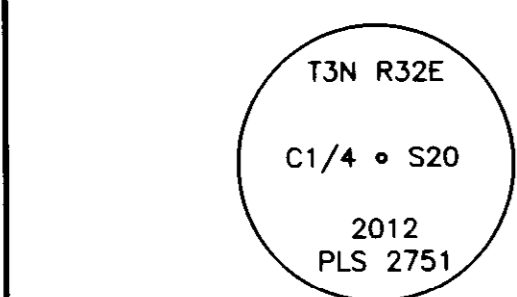
(O) WEST 1/4 CORNER SECTION 29, T3N, R32E, W.M. INDICATES FOUND AND ACCEPTED EVIDENCE OF ORIGINAL CORNER POSITION, HELD THE CENTERLINE OF HAGEN ROAD AS THE WEST LINE OF SECTION 29 AND HELD THE CENTERLINE OF SNYDER ROAD AS THE EAST-WEST CENTERLINE OF SECTION 29, HELD INTERSECTION OF SAID ROAD CENTERLINES AS THE WEST 1/4 CORNER. REESTABLISHED OBLITERATED CORNER POSITION AND SET A 3-1/4" ALUMINUM CAP (STAMPED AS SHOWN BELOW) ON A 2-1/4" x 12" ALUMINUM PIPE WITH DEEP-1 MAGNET SET IN CONCRETE, BURIED 6" BELOW GRAVEL ROAD SURFACE. SEE LAND CORNER RECORD FILED CONCURRENTLY WITH THIS PARTITION PLAT, MONUMENT AND REFERENCE OBJECTS SET 07-09-2012



(U) SOUTHWEST CORNER SECTION 30, T3N, R32E, W.M. ACCEPTED CORNER. FOUND IRON PIPE WITH 2-3/8" BRASS CAP AS SET IN SURVEY REFERENCE NO. 6, SEE LAND CORNER RECORD 06-462-C. BRASS CAP IS 1.0' BELOW GROUND SURFACE, VISITED 10-19-2011.

RECORDING INFORMATION UMATILLA COUNTY OFFICE OF RECORDS

STATE OF OREGON, COUNTY OF UMATILLA } I certify that this instrument was received and recorded ON September 19, 2012 at 1:00 o'clock Pm., in the record of PLATS of said County. YEAR 2012 NUMBER 18 Slide OFFICE OF COUNTY RECORDS By: JEAN HEMPHILL, Records Officer Fees \$ 73.00 No. 2012-5960289



(V) EAST 1/4 CORNER SECTION 32, T3N, R32E, W.M. CALCULATED POSITION. CORNER OBLITERATED. HELD THE POSITION OF THE BRASS CAP AS SHOWN IN SURVEY REFERENCE NO. 4, BASED ON TIES TO FOUND MONUMENTS AT THE SOUTHEAST CORNER AND SOUTHWEST CORNER OF SECTION 32. NO MONUMENT FOUND OR SET IN THIS SURVEY, SECTION 32 MONUMENTS VISITED 10-20-2011

(W) SOUTHEAST CORNER SECTION 32, T3N, R32E, W.M. ACCEPTED CORNER. FOUND IRON PIPE WITH 2-1/2" BRASS CAP AS SHOWN IN SURVEY REFERENCE NO. 4, NO LAND CORNER RECORD FOUND, VISITED 10-20-2011

I CERTIFY THIS IS AN EXACT COPY OF PARTITION PLAT NO. 2012-18 JOHN J. SHEA, PROFESSIONAL LAND SURVEYOR REGISTRATION NO. 2751



PARTITION PLAT IN A PORTION OF THE SW1/4 OF SECTION 20 AND A PORTION OF THE NW 1/4 OF SECTION 29, T3N, R32E, W.M. UMATILLA COUNTY, OREGON J-U-B ENGINEERS, INC. 2810 W. CLEARWATER, STE. 201 KENNEWICK, WA 99336 PHONE: 509-783-2144 CALC: JJS DWG: JJS CHK: JJS SHEET 2 OF 4 DATE: AUGUST 27, 2012 PRJ.NO. 30-11-049

(I) EAST 1/4 CORNER SECTION 20, T3N, R32E, W.M. ACCEPTED CORNER. HELD HUB AND TACK AT THE SOUTH SIDE OF A LONE RAILROAD TIE FENCE POST AT THE INTERSECTION OF FIELD LINES NORTH, SOUTH, EAST AND WEST AS SHOWN IN SURVEY REFERENCE NO. 8. HUB AND TACK, FENCE POST AND FIELD LINES VISITED ON 10-20-2011.

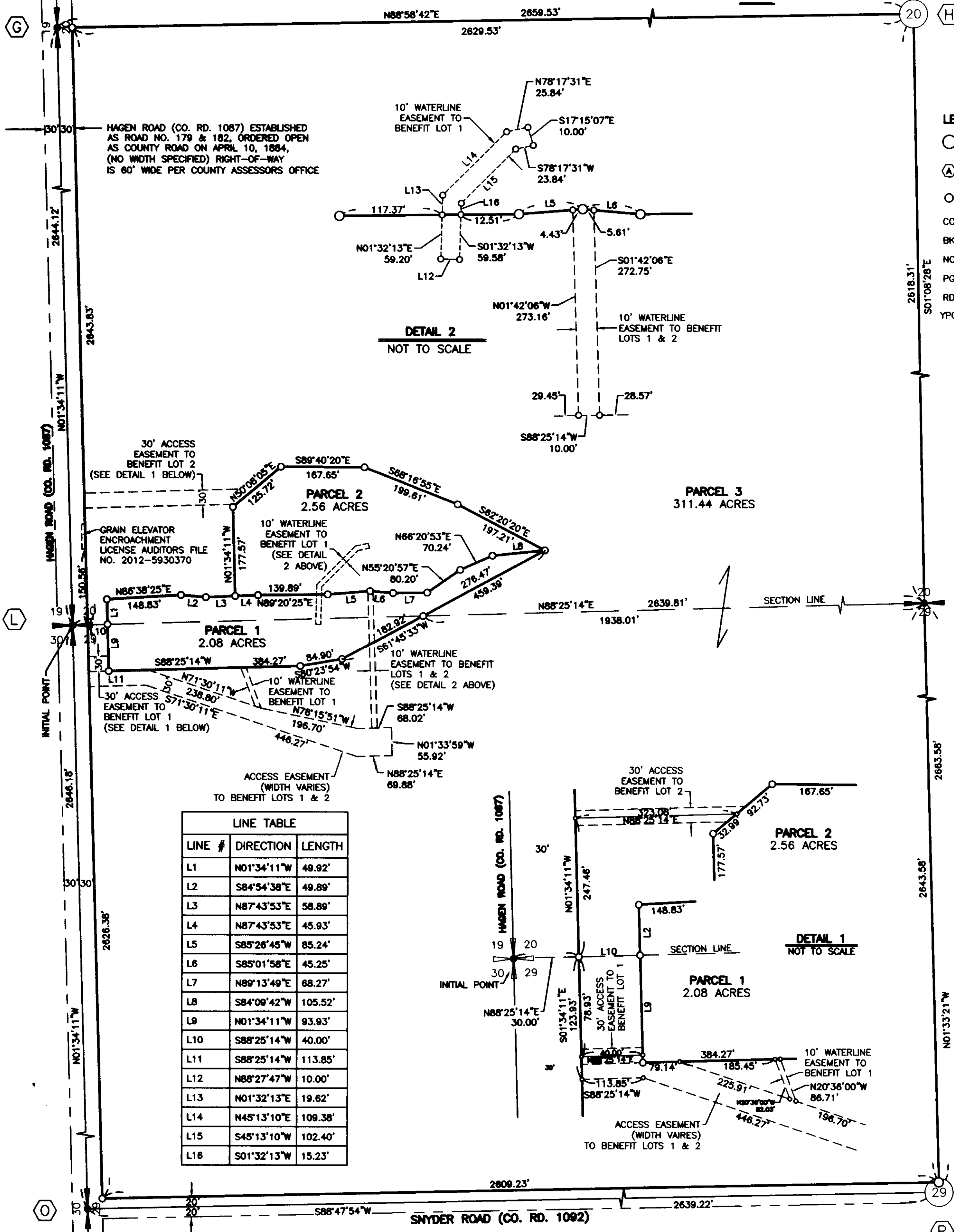
RECEIVED BY Umatilla County Surveyor Date: 10/4/2012 Rec'd By: J. Oles No.: 12-126-B

Plot Date: 9/14/2012 9:43 AM Plotted By: Mary M. Ganske
 Date Created: 10/31/2011 \K\K\FILES\PUBLIC\PROJECT\JUB\30-11-049 - WEIDERT FARMS ON-CALL ENGCAD\MODEL\30-11-049_C-PB.DWG

PARTITION PLAT FOR TIM WEIDERT

IN A PORTION OF THE SW 1/4 OF SECTION 20
 AND A PORTION OF THE NW 1/4 OF SECTION 29
 TOWNSHIP 3 NORTH, RANGE 32 EAST, W.M.
 UMATILLA COUNTY, OREGON

PARTITION PLAT NO. 2012-18



- LEGEND**
- INDICATES 5/8" x 30" IRON REBAR WITH YELLOW PLASTIC CAP STAMPED: "SHEA 2751" SET IN THIS SURVEY
 - △ INDICATES SECTION CORNER ANNOTATION, SEE SECTION CORNER NOTES ON SHEET 2
 - INDICATES CALCULATED POSITION ONLY, NO MONUMENT FOUND OR SET IN THIS SURVEY
 - CO COUNTY
 - BK BOOK
 - NO. NUMBER
 - PG PAGE
 - RD ROAD
 - YPC YELLOW PLASTIC CAP

LINE TABLE

LINE #	DIRECTION	LENGTH
L1	N01°34'11"W	49.92'
L2	S84°54'38"E	49.89'
L3	N87°43'53"E	58.89'
L4	N87°43'53"E	45.93'
L5	S85°26'45"W	85.24'
L6	S85°01'58"E	45.25'
L7	N89°13'49"E	68.27'
L8	S84°09'42"W	105.52'
L9	N01°34'11"W	93.93'
L10	S88°25'14"W	40.00'
L11	S88°25'14"W	113.85'
L12	N88°27'47"W	10.00'
L13	N01°32'13"E	19.62'
L14	N45°13'10"E	109.38'
L15	S45°13'10"W	102.40'
L16	S01°32'13"W	15.23'

RECORDING INFORMATION
 UMATILLA COUNTY OFFICE OF RECORDS

STATE OF OREGON, }
 COUNTY OF UMATILLA }
 I certify that this instrument was received and recorded
 ON September 19, 2012
 at 1:00 o'clock Pm., in the record of
 PLATS of said County.
 YEAR NUMBER Slide
 2012 18

OFFICE OF COUNTY RECORDS
 By: JEAN HEMPHILL, Records Officer
 Fees \$ 73.00 No. 2012-5960289

SURVEYORS CERTIFICATE

I HEREBY CERTIFY THAT THIS PARTITION PLAT IS A TRUE AND CORRECT REPRESENTATION OF THE LANDS ACTUALLY SURVEYED AND THAT THIS PARTITION PLAT IS BASED ON ACTUAL SURVEY AND SUBDIVISION OF A PORTION OF SECTIONS 20 & 29, TOWNSHIP 3 NORTH, RANGE 32 EAST, W.M., THAT THE DISTANCES, COURSES AND ANGLES SHOWN HEREON ARE CORRECT TO THE BEST OF MY KNOWLEDGE, INFORMATION, AND BELIEF AND THAT PROPER MONUMENTS HAVE BEEN SET AND CORNERS ARE STAKED ON THE GROUND.

08-27-2012
 REGISTERED
**PROFESSIONAL
 LAND SURVEYOR**

John J. Shea
 JOHN JOSEPH SHEA
 2751LS
 RENEWAL DATE: 6-30-14

I CERTIFY THIS IS AN EXACT COPY OF PARTITION PLAT NO. 2012-18

John J. Shea
 JOHN J. SHEA, PROFESSIONAL LAND SURVEYOR
 REGISTRATION NO. 2751

RECEIVED BY
 Umatilla County Surveyor
 Date: 10/4/2012
 Rec'd By: J. Res
 No.: 12-126-B

PARTITION PLAT

IN A PORTION OF THE SW1/4 OF SECTION 20 AND A PORTION OF THE NW 1/4 OF SECTION 29, T3N, R32E, W.M. UMATILLA COUNTY, OREGON

J-U-B ENGINEERS, INC.
 2810 W. CLEARWATER, STE. 201
 KENNEWICK, WA 99336
 PHONE: 509-783-2144

JUB
 J-U-B ENGINEERS, INC.

CALC: JJS DWG: JJS CHK: JJS SHEET 3 OF 4
 DATE: AUGUST 27, 2012 PRJ.NO. 30-11-049

PARTITION PLAT FOR TIM WEIDERT

IN A PORTION OF THE SW 1/4 OF SECTION 20
AND A PORTION OF THE NW 1/4 OF SECTION 29
TOWNSHIP 3 NORTH, RANGE 32 EAST, W.M.
UMATILLA COUNTY, OREGON

PARTITION PLAT NO. 2012- 18

APPROVALS

LAND PARTITION APPROVAL NO. LUD-147-12

UMATILLA COUNTY PLANNING DIRECTOR APPROVAL

EXAMINED AND APPROVED BY THE UMATILLA COUNTY PLANNING DIRECTOR
[Signature] 9-18-12
UMATILLA COUNTY PLANNING DIRECTOR DATE

UMATILLA COUNTY SURVEYOR APPROVAL

EXAMINED AND APPROVED BY THE UMATILLA COUNTY SURVEYOR
[Signature] 9/10/2012
UMATILLA COUNTY SURVEYOR DATE

TAX COLLECTOR APPROVAL

THIS IS TO CERTIFY THAT ALL TAXES AND ASSESSMENTS WHICH
ARE NOW DUE AND PAYABLE ACCORDING TO THE RECORDS OF
UMATILLA COUNTY HAVE BEEN FULLY PAID.

[Signature] 9/17/2012
UMATILLA COUNTY TAX COLLECTOR DATE

OWNERS DEDICATION

I TIMOTHY S. WEIDERT, DO HEREBY ACKNOWLEDGE THIS PARTITION PLAT WAS
PREPARED WITH MY KNOWLEDGE AND CONSENT AND PARTITIONED IN
ACCORDANCE WITH OREGON REVISED STATUTE CHAPTER 92, AS REVISED
AND THE UMATILLA COUNTY DEVELOPMENT ORDINANCE.

[Signature]
TIMOTHY S. WEIDERT

ACKNOWLEDGMENT

STATE OF OREGON
COUNTY OF UMATILLA

I CERTIFY THAT I KNOW OR HAVE SATISFACTORY EVIDENCE THAT TIMOTHY S.
WEIDERT SIGNED THIS INSTRUMENT AND ACKNOWLEDGED IT TO BE HIS FREE
AND VOLUNTARY ACT FOR THE USES AND PURPOSES MENTIONED IN THE
INSTRUMENT.

[Signature]
NOTARY PUBLIC FOR THE STATE OF OREGON

DATED September 17, 2012

MY COMMISSION EXPIRES September 5, 2014

COMMISSION NUMBER 451168

RECORDING INFORMATION UMATILLA COUNTY OFFICE OF RECORDS

STATE OF OREGON, }
COUNTY OF UMATILLA } ss
I certify that this instrument was received and
recorded
ON September 19, 2012
at 1:00 o'clock Pm., in the record of
PLATS of said County.
YEAR NUMBER Slide
2012 18

RECEIVED BY
Umatilla County Surveyor
Date: 10/4/2012
Rec'd By: [Signature]
No.: 12-126-B

OFFICE OF COUNTY RECORDS
By: ...JEAN HEMPHILL...Records Officer
Fees \$ 73.00 No. 2012-5960289

SURVEY REFERENCES

- (XX CH)R1 - RECORD DIMENSION FROM GENERAL LAND OFFICE SURVEY BY DEPUTY SURVEYOR, DOLPHUS S. PAYNE, CONTRACT NO. 100, DATED AUGUST 1, 1861
- (XX CH)R2 - RECORD DIMENSION FROM GENERAL LAND OFFICE SURVEY BY DEPUTY SURVEYOR, DANIEL CHAPLIN, CONTRACT NO. 107, DATED SEPTEMBER 21, 1864
- (X.XX)R3 - RECORD DIMENSION FROM SURVEY NUMBER Q-521-C BY FRANK HAYES, UNDATED
- (X.XX)R4 - RECORD DIMENSION FROM SURVEY NUMBER 89-123-B BY PENDLETON ENGINEERING DEPARTMENT, DATED AUGUST 01, 1978
- (X.XX)R5 - RECORD DIMENSION FROM BOUNDARY LINE ADJUSTMENT SURVEY NUMBER 01-144-C BY WILLIAM WELLS, DATED JULY 2001
- (X.XX)R6 - RECORD DIMENSION FROM SURVEY NUMBER 06-462-C BY WILLIAM WELLS DATED APRIL 2006
- (X.XX)R7 - RECORD DIMENSION FROM SURVEY NUMBER 06-606-C BY STEPHEN HADDOCK DATED OCTOBER 2006

08-27-2012
REGISTERED
PROFESSIONAL
LAND SURVEYOR
[Signature]
OREGON
JAN 10, 1980
JOHN JOSEPH SHEA
2751LS
RENEWAL DATE: 6-30-14


I CERTIFY THIS IS AN EXACT COPY OF PARTITION PLAT NO. 2012-18

[Signature]
JOHN J. SHEA, PROFESSIONAL LAND SURVEYOR
REGISTRATION NO. 2751

SURVEYORS CERTIFICATE

I HEREBY CERTIFY THAT THIS PARTITION PLAT IS A TRUE AND CORRECT
REPRESENTATION OF THE LANDS ACTUALLY SURVEYED AND THAT THIS
PARTITION PLAT IS BASED ON ACTUAL SURVEY AND SUBDIVISION OF A PORTION
OF SECTIONS 20 & 29, TOWNSHIP 3 NORTH, RANGE 32 EAST, W.M., THAT
THE DISTANCES, COURSES AND ANGLES SHOWN HEREON ARE CORRECT TO
THE BEST OF MY KNOWLEDGE, INFORMATION, AND BELIEF AND THAT PROPER
MONUMENTS HAVE BEEN SET AND CORNERS ARE STAKED ON THE GROUND.

PARTITION PLAT
IN A PORTION OF THE SW1/4 OF SECTION 20 AND A
PORTION OF THE NW 1/4 OF SECTION 29, T3N, R32E, W.M.
UMATILLA COUNTY, OREGON

 J-U-B ENGINEERS, INC.	J-U-B ENGINEERS, INC. 2810 W. CLEARWATER, STE. 201 KENNEWCK, WA 98336 PHONE: 509-783-2144		
	CALC: JJS	DWG: JJS	CHK: JJS
DATE: AUGUST 27, 2012		PRJ.NO. 30-11-049	
SHEET 4 OF 4			