

STATE OF OREGON,
COUNTY OF UMATILLA }
I certify that this instrument was received and recorded
ON September 18, 2012
at 11:45 o'clock Am., in the record of
PLATS of said County.
YEAR NUMBER Slide
2012 17

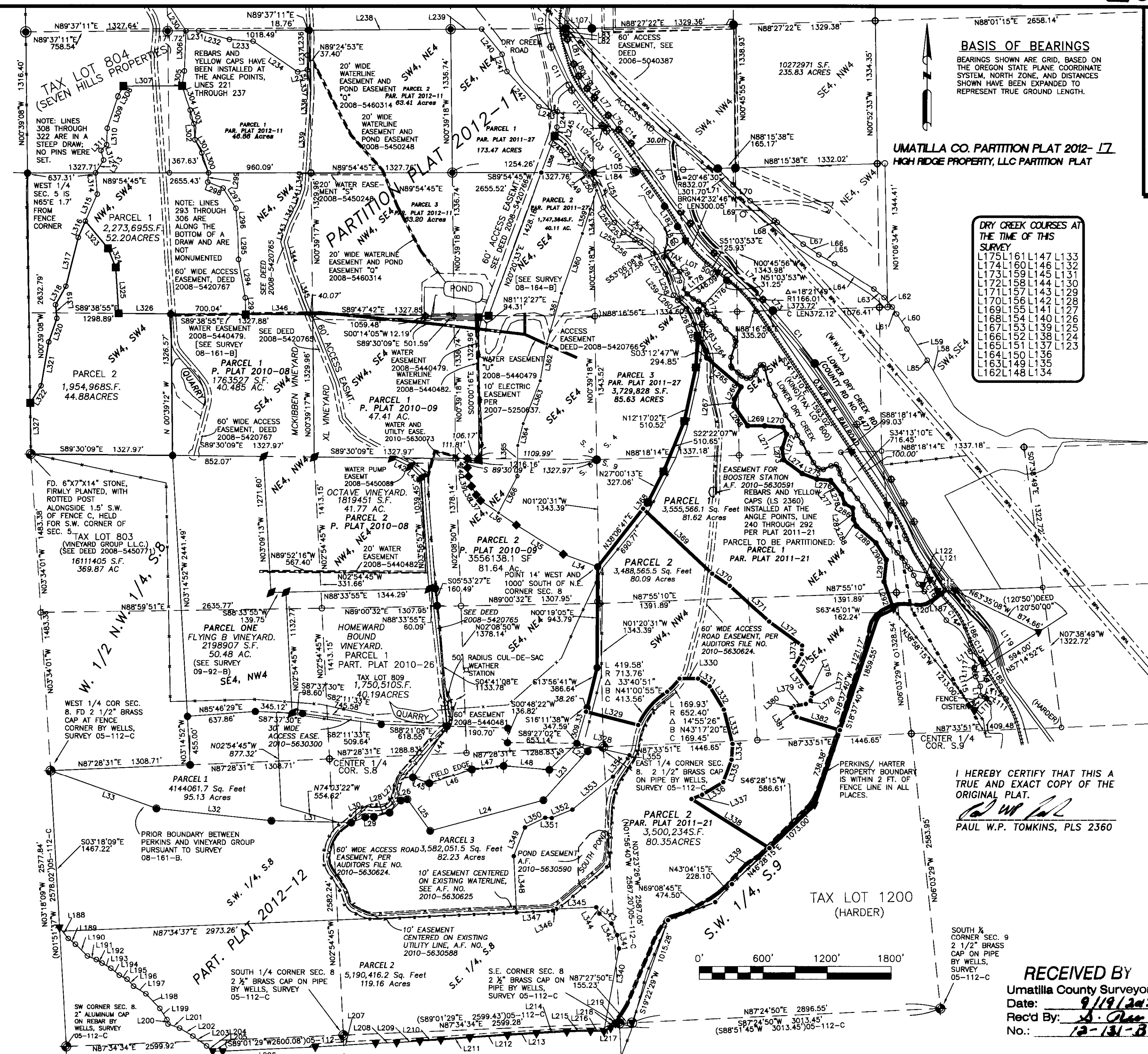
OFFICE OF COUNTY RECORDS
By: JEAN HEMPHILL...Records Officer
Fees \$ 73.00 No. 2012-5960256

BASIS OF BEARINGS
BEARINGS SHOWN ARE GRID, BASED ON THE OREGON STATE PLANE COORDINATE SYSTEM, NORTH ZONE, AND DISTANCES SHOWN HAVE BEEN EXPANDED TO REPRESENT TRUE GROUND LENGTH.

**UMATILLA CO. PARTITION PLAT 2012-17
HIGH RIDGE PROPERTY, LLC PARTITION PLAT**

DRY CREEK COURSES AT THE TIME OF THIS SURVEY

L175	L161	L147	L133
L174	L160	L146	L132
L173	L159	L145	L131
L172	L158	L144	L130
L171	L157	L143	L129
L170	L156	L142	L128
L169	L155	L141	L127
L168	L154	L140	L126
L167	L153	L139	L125
L166	L152	L138	L124
L165	L151	L137	L123
L164	L150	L136	
L163	L149	L135	
L162	L148	L134	



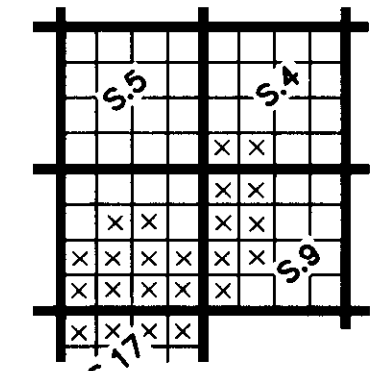
I HEREBY CERTIFY THAT THIS A TRUE AND EXACT COPY OF THE ORIGINAL PLAT.
Paul W.P. Tomkins
PAUL W.P. TOMKINS, PLS 2360



RECEIVED BY
Umatilla County Surveyor
Date: 9/19/2012
Rec'd By: S. Alan
No.: 12-131-B

Project:
A REPLAT OF PARCEL 3, PART. PLAT 2010-26 OF MAP 5N 35, BEING LOCATED IN THE NE 1/4, THE NW 1/4, THE SE 1/4 AND THE SW 1/4 OF SEC. 8, AND IN THE SOUTH 1/2 OF THE SW 1/4 OF SEC. 4, THE NW 1/4 AND SW 1/4 OF SEC. 9, AND THE NW 1/4 AND THE NE 1/4 OF SEC. 17, T5N, R35E, W.M., UMATILLA CO. OR

Client
NORM MCKIBBEN
SEVEIN VINEYARDS
83501 LOWER DRY. CR. RD.
MILTON FREEWATER, OR



Project Mgr.	PWPT
Drawn	PWPT
Checked	GEF
Date	07-01-2012
Scale	1" = 600'
CAD File:	HIGH RIDGE PART EF PLAT 2012.DWG
Sheet Contents:	HIGH RIDGE PART EF PLAT 2012.DWG
Sheet No.:	1 OF 2
U.S.K.H. W.O.	1363200

UMATILLA CO. PARTITION PLAT 2012- 17
HIGH RIDGE PROPERTY, LLC PARTITION PLAT

STATE OF OREGON, }
COUNTY OF UMATILLA }
I certify that this instrument was received and recorded
ON September 18, 2012
at 11:45 o'clock Am., in the record of
PLATS of said County.
YEAR NUMBER Slide
2012 17

OFFICE OF COUNTY RECORDS

By: ...JEAN HEMPHILL...Records Officer

Fees \$ 73.00 No. 2012-5960256

USKH
SHARED VISION. UNIFIED APPROACH.
Architecture • Engineering
Land Surveying • Planning
Environmental Services
www.USKH.com

5 North Colville
Walla Walla, WA 99362
(509) 522-4843

REGISTERED PROFESSIONAL LAND SURVEYOR

OREGON
JULY 26, 1988
PAUL W.P. TOMKINS
2360

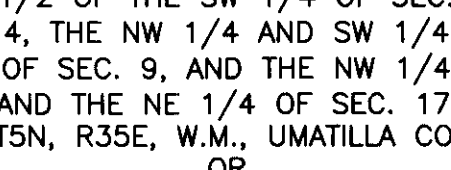
renew 6/30/14

Date Stamped: 9/5/12

Project:
A REPLAT OF PARCEL 3, PART. PLAT 2010-26 OF MAP 5N 35, BEING LOCATED IN THE NE 1/4, THE NW 1/4, THE SE 1/4 AND THE SW 1/4 OF SEC. 8, AND IN THE SOUTH 1/2 OF THE SW 1/4 OF SEC. 4, THE NW 1/4 AND SW 1/4 OF SEC. 9, AND THE NW 1/4 AND THE NE 1/4 OF SEC. 17, T5N, R35E, W.M., UMATILLA CO. OR

Client
NORM MCKIBBEN
SEVEIN VINEYARDS
83501 LOWER DRY. CR. RD.
MILTON FREEWATER, OR

SECTION INDEX, T5N, R35E



Project Mgr. PWPT
Drawn PWPT
Checked GEF
Date 07-02-12
Scale 1" = 600'
CAD File: HIGH RIDGE PART EF PLAT 2012.DWG
Sheet Contents: HIGH RIDGE PART EF PLAT 2012.DWG
Sheet No.: 2 OF 2
U.S.K.H. W.O. 1332700

Table with columns: LINE, BEARING, DISTANCE. Contains lines L1 through L108.

Table with columns: LINE, BEARING, DISTANCE. Contains lines L110 through L219.

Table with columns: LINE, BEARING, DISTANCE. Contains lines L220 through L327.

Table with columns: LINE, BEARING, DISTANCE. Contains lines L328 through L367.

Table with columns: LINE, BEARING, DISTANCE. Contains lines L307 through L327.

Table with columns: LINE, BEARING, DISTANCE. Contains lines L193 through L219.

Table with columns: CURVE, RADIUS, ARC LENGTH, CHORD LENGTH, CHORD BEARING, DELTA ANGLE. Contains curves C1 through C14.

Table with columns: LINE, BEARING, DISTANCE. Contains lines L368 through L382.

LEGEND

- PROPOSED NEW PARCEL BOUNDARY
EASEMENT BOUNDARY
SECTION SUBDIVISION LINE
EXISTING PARCEL LINE
FENCE
RIGHT OF WAY LINE
EXISTING ROAD CENTER LINE
FOUND MONUMENT AS NOTED
CALCULATED POSITION NOTHING FOUND OR SET.
RECORD DIMENSION AS NOTED
FD. 5/8"x30" IRON REBAR WITH PLASTIC YELLOW CAP STAMPED "USKH-OR-2360" PER PERKINS-NORTH SLOPE B.L.A. (COUNTY SURVEY 08-161-B)
FD. 5/8"x30" IRON REBAR WITH PLASTIC YELLOW CAP STAMPED "USKH-OR-2360" PER SURVEY 08-164-B.
FD. A 5/8" X 30" IRON REBAR WITH A YELLOW PLASTIC CAP STAMPED "USKH INC. 2360 OR" PER SURVEY 06-206-C.
FD. A 5/8" X 30" IRON REBAR WITH A YELLOW PLASTIC CAP STAMPED "USKH INC. 2360 OR" PER SURVEY 09-035-C.
FD. 5/8"x30" IRON REBAR WITH PLASTIC YELLOW CAP STAMPED "USKH-OR-2360" SET PER SURVEY 09-092-B
REBAR AND YELLOW CAP ESTABLISHED BY PARTITION PLAT 2010-09.
5/8" REBAR AND YELLOW CAP "USKH-OR-2360" PER PARTITION PLAT 2010-26.
5/8" REBAR AND YELLOW CAP "USKH-OR-2360" ALONG NEW PARCEL BOUNDARY SET IN 2012, PART. PLAT 2012-11, 2012-12, OR THIS SURVEY

NARRATIVE: THIS SURVEY WAS PERFORMED AT THE REQUEST OF NORM MCKIBBEN TO PARTITION LANDS CREATED BY A PARTITION IN 2011. THIS SURVEY WAS PERFORMED AS A REAL TIME KINEMATIC SURVEY USING TOPCON HIPER PLUS DUAL FREQUENCY GPS RECEIVERS WITH A PRECISION OF ONE CENTIMETER ± 1 PPM.

I, PAUL W.P. TOMKINS, PLS 2360, DO HEREBY CERTIFY THAT THIS IS A TRUE AND ACCURATE SURVEY OF THE FOLLOWING DESCRIBED PARCEL OF LAND:

PARCEL 1 OF PARTITION PLAT 2011-21, AS FILED IN THE OFFICE OF THE RECORDER OF UMATILLA COUNTY, OREGON, AND RECORDED AT FILE NUMBER 2011-5830274

APPROVALS APPROVED THIS 1st DAY OF Sept 2012, IN ACCORDANCE WITH UMATILLA COUNTY DEVELOPMENT CODE,

UMATILLA COUNTY PLANNING DIRECTOR

APPROVED THIS 7th DAY OF Sept 2012, IN ACCORDANCE WITH THE UMATILLA COUNTY DEVELOPMENT CODE.

UMATILLA COUNTY SURVEYOR

TAX COLLECTOR'S CERTIFICATE I HEREBY CERTIFY THAT ALL TAXES FOR THE YEAR 2012 AGAINST THE PROPERTY SHOWN HEREIN HAVE BEEN PAID.

UMATILLA COUNTY TAX COLLECTOR

OWNERS' DECLARATION

KNOW ALL MEN BY THESE PRESENTS THAT I, NORM MCKIBBEN, MANAGING PARTNER FOR HIGH RIDGE PROPERTY, L.L.C., OWNER, HAVE CAUSED THESE LANDS TO BE SURVEYED AND SUBDIVIDED AS SHOWN, AND DO HEREBY DEDICATE THE PARTITION PLAT TO UMATILLA COUNTY, OREGON.

NORM MCKIBBEN, MANAGING PARTNER FOR HIGH RIDGE PROPERTY, LLC

ACKNOWLEDEMENT

STATE OF WASHINGTON COUNTY OF WALLA WALLA

BEFORE ME THIS 6th DAY OF Sept 2012, APPEARED NORM MCKIBBEN, MANAGING PARTNER FOR HIGH RIDGE PROPERTY, LLC, TO ME PERSONALLY KNOWN, WHO ACKNOWLEDGED THE FOREGOING PARTITIONING OF LAND TO BE A FREE AND VOLUNTARY ACT AND DEED.

WITNESS MY HAND AND OFFICIAL SEAL THIS 6th DAY OF Sept 2012.

NOTARY PUBLIC FOR THE STATE OF WASHINGTON, RESIDING IN Walla Walla



I HEREBY CERTIFY THAT THIS IS A TRUE AND EXACT COPY OF THE ORIGINAL PLAT.

PAUL W.P. TOMKINS, P.L.S. 2360

RECEIVED BY Umatilla County Surveyor Date: 9/19/2012 Rec'd By: J. Oller No.: 12-131-B