

2012-01

PARTITION PLAT 2012-01

A REPLAT OF PARCEL 3, PARTITION PLAT 1996-31
IN SE 1/4, NW 1/4, SEC. 17, T 4 N, R 28 E,
W.M, UMATILLA COUNTY, OREGON
#LD-4N-942-11

APPROVALS:
UMATILLA COUNTY SURVEYOR
APPROVED THIS 5 DAY OF Jan, 2012
David H. Klein
UMATILLA COUNTY SURVEYOR

UMATILLA COUNTY PLANNING DEPARTMENT
APPROVED THIS 11th DAY OF January, 2012
Jeff Mallett
UMATILLA COUNTY PLANNING DIRECTOR

WESTLAND IRRIGATION DISTRICT
APPROVED THIS 21st DAY OF DEC, 2011.
Mike Clark
MANAGER

UMATILLA COUNTY TAX COLLECTOR
TAXES ARE PAID IN FULL
APPROVED THIS 6th DAY OF January, 2012
Christine Smith by Kristin Ahamed
UMATILLA COUNTY TAX COLLECTOR

BEARING BASE, MY 2001 SURVEY FOR WESTLAND IRRIGATION DIST.

7
18 17
FND. 1" I. PIPE
ORIGIN UNKNOWN

8
1/4
FND. 1" ROD
5/8" IRON REBAR
#506
"WESTLAND ESTATES"

SURVEYOR'S CERTIFICATE & NARRATIVE:

I, G. DENNIS EDWARDS, AM A REGISTERED SURVEYOR OF THE STATE OF OREGON AND HAVE MARKED WITH PROPER MONUMENTS THE LAND SHOWN ON THIS MAP.
THIS TRACT (PARCEL 3 OF PARTITION PLAT 1996-31) WAS NOT SURVEYED WHEN IT WAS CREATED BECAUSE IT IS OVER 10 ACRES.
I RETRACED THOMPSON'S PARTITION PLAT 1996-31 TO ESTABLISH THE NORTH CORNERS OF THIS TRACT AND FOR THE SOUTH CORNERS I USED THE MONUMENTS I SET IN DEC. 2011 TO CORRECT A 2001 SURVEY I DID FOR WESTLAND IRRIGATION DISTRICT.
THIS SURVEY WAS CONDUCTED WITH A TOPCON HIPER+ G.P.S. AND A SOKKIA SET 300 TOTAL STATION.
THE DESCRIPTION OF THIS TRACT IS PARCEL 3 OF PARTITION PLAT 1996-31 IN THE SE 1/4 OF THE NW 1/4 OF SECTION 17, T 4 N, R 28 E, UMATILLA COUNTY OREGON.

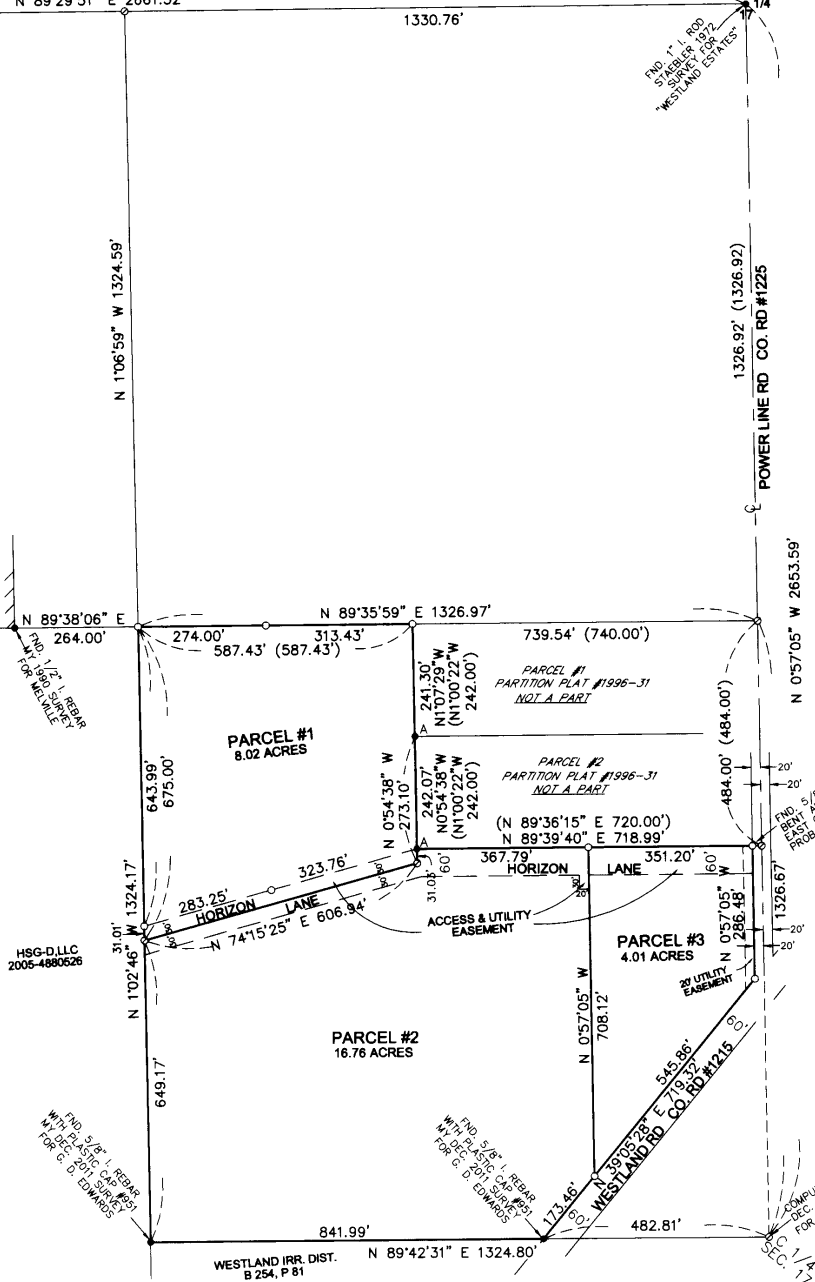
REGISTERED PROFESSIONAL LAND SURVEYOR
G. Dennis Edwards
OREGON
JULY 16, 1971
G. DENNIS EDWARDS
RENEWS 12/31/2011

OWNER'S DECLARATION:

HSG-D,LLC, THE OWNERS OF THE ABOVE DESCRIBED LAND, HEREBY DECLARE THAT WE HAVE CAUSED THIS PLAT TO BE PREPARED.
WE HEREBY DEDICATE A 60 FOOT WIDE STRIP OF LAND AND A 20' BY 30' HAMMER HEAD TURN AROUND, SHOWN AS HORIZON LANE, FOR AN EASEMENT FOR INGRESS, EGRESS, AND UTILITIES FOR THE USE OF ALL THREE PARCELS AND FOR THE USE OF LAND LYING WESTERLY OF THIS TRACT.
WE ALSO DEDICATE A 20 FOOT WIDE UTILITY EASEMENT ALONG THE EAST LINE OF PARCEL THREE FOR AN EXISTING POWER LINE AND OTHER UTILITIES.

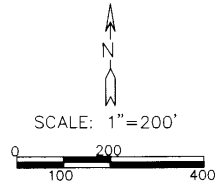
Stephen F. Gass
STEPHEN F. GASS, MANAGER OF HSG-D, LLC

STATE OF OREGON
COUNTY OF Washington
BEFORE ME THIS 29 DAY OF December, 2011
APPEARED STEPHEN F. GASS, MANAGER OF HSG-D,LLC,
AND ACKNOWLEDGED THE FOREGOING DECLARATION
Patience R. Terrazzino
NOTARY PUBLIC FOR OREGON
PRINTED NAME Patience R. Terrazzino
COMMISSION NO. 450368
MY COMMISSION EXPIRES June 27, 2014



RECEIVED BY
Umatilla County Surveyor
Date: 3/5/2012
Rec'd By: J. R. Rasmussen
No.: 12-05-0

STATE OF OREGON, COUNTY OF UMATILLA }
I certify that this instrument was received and recorded
ON January 19, 2012
at 3:00 o'clock Pm., in the record of PLATS of said County.
YEAR NUMBER Slide
2012 01
OFFICE OF COUNTY RECORDS
By: JEAN HEMPHILL, Records Officer
Fees \$ 65.00 No. 2012-5870162



- LEGEND:
- FOUND MONUMENTS AS NOTED UNLESS NOTED AS BELOW
 - ▲ FOUND 5/8" IRON REBAR WITH PLASTIC CAP #506, THOMPSON 1996, PARTITION PLAT 1996-31
 - SET 5/8"x30" IRON REBAR WITH PLASTIC CAP #951
 - ⊙ COMPUTED LOCATION
 - (000) OF RECORD, PARTITION PLAT 1996-31

THIS IS AN EXACT COPY: *G. Dennis Edwards*
G. DENNIS EDWARDS

JOB# 50801017
EDWARDS SURVEYING P.O. BOX 763
541-567-3336 HERMISTON, OREGON 97838
DRAWN BY JMC