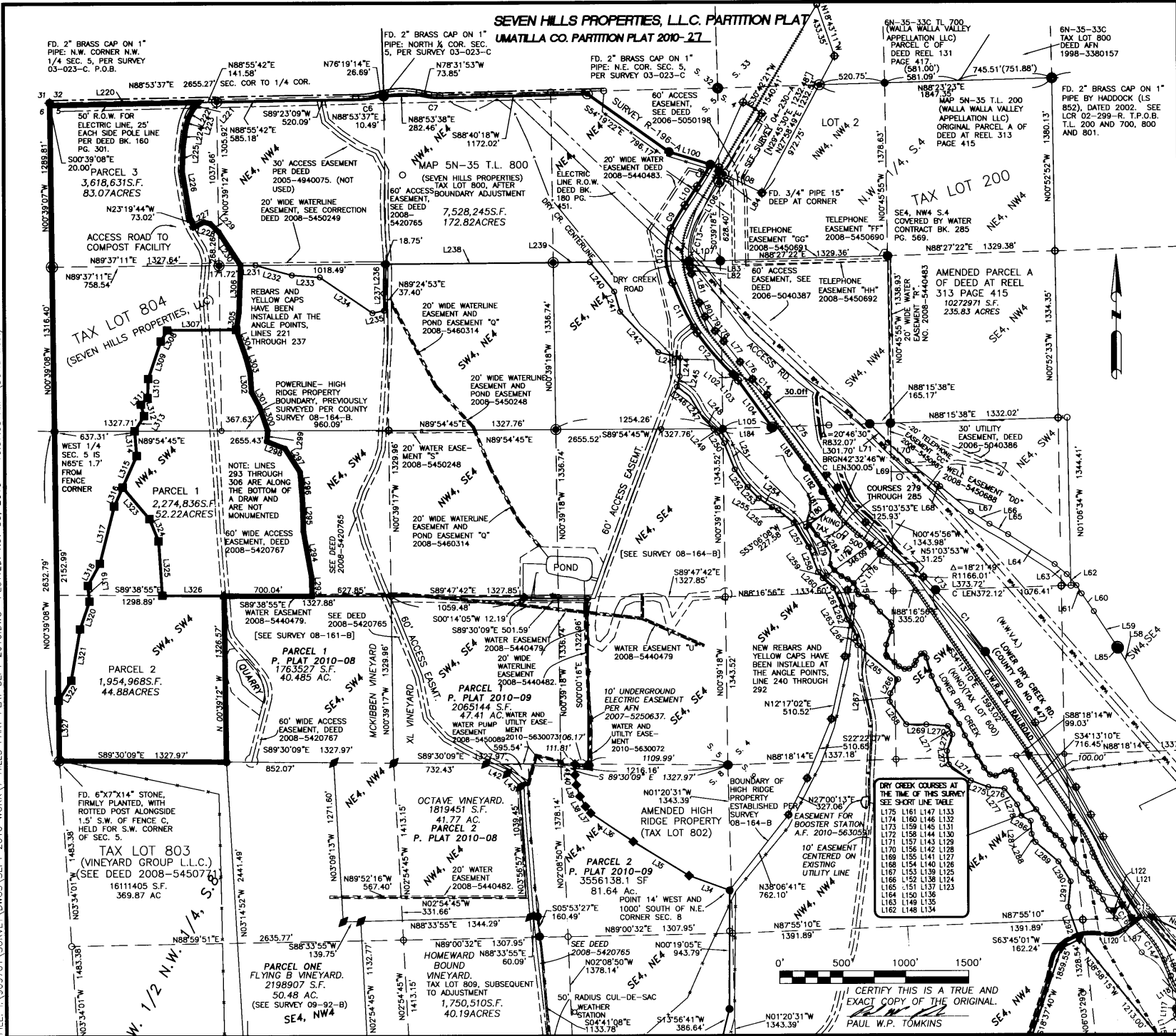


SEVEN HILLS PROPERTIES, L.L.C. PARTITION PLAT  
UMATILLA CO. PARTITION PLAT 2010-27



STATE OF OREGON,  
COUNTY OF UMATILLA }  
I certify that this instrument was received and recorded  
ON December 6, 2010  
at 1:30 o'clock P.m., in the record of  
PLATS of said County.  
YEAR NUMBER Slide  
2010 27  
**OFFICE OF COUNTY RECORDS**  
By: JHEAN HEMPHILL, Records Officer  
Fees \$ 65.00 No. 2010-5730073

**USKH**  
SHARED VISION. UNIFIED APPROACH.  
Architecture • Engineering  
Land Surveying • Planning  
Environmental Services  
www.USKH.com  
5 North Colville  
Walla Walla, WA 99362  
(509) 522-4843  
REGISTERED PROFESSIONAL LAND SURVEYOR  
OREGON  
JULY 26, 1988  
PAUL W.P. TOMKINS  
2360  
renew 6/30/12

Date Stamped: 11/30/10  
Project:  
A PARTITION PLAT OF TAX  
LOT 804, BEING LOCATED IN  
THE NW 1/4, NW 1/4, THE  
NE 1/4, NW 1/4, THE SW  
1/4, NW 1/4, THE SE 1/4,  
NW 1/4, THE NW 1/4, SW  
1/4, THE NE 1/4, SW 1/4,  
AND THE SW 1/4, SW 1/4,  
ALL IN SEC. 5 OF T5N,  
R35E, WM, UMATILLA CO. OR  
Client:  
BOB BUCHANNAN  
NORTH SLOPE PROPERTIES  
83501 LOWER DRY CR. RD.  
MILTON FREEMANOR, OR

SECTION INDEX

X	X	X	X
X	X	X	X
X	X	X	X
X	X	X	X

SEC. 5, T5N, R35E, W.M.

Project Mgr.	PWPT
Drawn	PWPT
Checked	GEF
Date	11-30-10
Scale	1" = 500'
CAD File:	7 HILLS PART PLAT SEPT 2010.DWG
Sheet Contents:	7 HILLS PART PLAT SEPT 2010.DWG
Sheet No.:	1 OF 3
U.S.K.H. W.O. 909701	Umatilla County Surveyor 12-10

FILE: \\1009701\SURVEY\DWGS\SEPT 2010 WORK\7 HILLS PART PLAT SEPT 2010.DWG PLOTTED: Nov. 30, 2010 - 10:07:03 AM (David West)

DRY CREEK COURSES AT THE TIME OF THIS SURVEY  
SEE SURVEY LINE TABLE  
L175 L161 L147 L133  
L174 L160 L146 L132  
L173 L159 L145 L131  
L172 L158 L144 L130  
L171 L157 L143 L129  
L170 L156 L142 L128  
L169 L155 L141 L127  
L168 L154 L140 L126  
L167 L153 L139 L125  
L166 L152 L138 L124  
L165 L151 L137 L123  
L164 L150 L136 L122  
L163 L149 L135  
L162 L148 L134

I CERTIFY THIS IS A TRUE AND EXACT COPY OF THE ORIGINAL.  
PAUL W.P. TOMKINS

Handed by: EK  
10-182-B



SEVEN HILLS PROPERTIES, L.L.C. PARTITION PLAT  
UMATILLA CO. PARTITION PLAT 2010-27

STATE OF OREGON, }  
COUNTY OF UMATILLA }  
I certify that this instrument was received and recorded

ON December 6, 2010  
at 1:30 o'clock P.m., in the record of  
PLATS of said County.  
YEAR NUMBER Slide  
2010 27

OFFICE OF COUNTY RECORDS

By: ...JEAN HEMPHILL...Records Officer

Fees \$ 65.00 No. 2010-5730073

APPROVALS  
APPROVED THIS 6<sup>th</sup> DAY OF December  
2010, IN ACCORDANCE WITH UMATILLA COUNTY  
DEVELOPMENT CODE,

[Signature]  
UMATILLA COUNTY PLANNING DIRECTOR

APPROVED THIS 6 DAY OF December  
2010, IN ACCORDANCE WITH THE UMATILLA  
COUNTY DEVELOPMENT CODE.

[Signature]  
UMATILLA COUNTY SURVEYOR

TAX COLLECTOR'S CERTIFICATE  
I HEREBY CERTIFY THAT ALL TAXES FOR THE YEAR  
2010 AGAINST THE PROPERTY SHOWN  
HEREIN HAVE BEEN PAID.

[Signature] 12/31/2010  
UMATILLA COUNTY TAX COLLECTOR DATE

OWNERS' DECLARATION  
KNOW ALL MEN BY THESE PRESENTS THAT I, NORM MCKIBBEN,  
MANAGING PARTNER FOR SEVEN HILLS PROPERTIES, L.L.C., OWNER,  
HAVE CAUSED THESE LANDS TO BE SURVEYED AND SUBDIVIDED AS  
SHOWN, AND DO HEREBY DEDICATE THE PARTITION PLAT TO  
UMATILLA COUNTY, OREGON.

[Signature] Managing Partner  
NORM MCKIBBEN, MANAGING PARTNER FOR SEVEN HILLS  
PROPERTIES, L.L.C. DATE 12/4/2010

ACKNOWLEDGEMENT

STATE OF WASHINGTON  
COUNTY OF WALLA WALLA

BEFORE ME THIS 1<sup>st</sup> DAY OF December, 2010 APPEARED  
NORM MCKIBBEN, MANAGING PARTNER FOR SEVEN HILLS  
PROPERTIES, LLC, TO ME PERSONALLY KNOWN, WHO  
ACKNOWLEDGED THE FOREGOING PARTITIONING OF LAND TO BE A  
FREE AND VOLUNTARY ACT AND DEED.

WITNESS MY HAND AND OFFICIAL SEAL THIS 1<sup>st</sup> DAY OF  
December, 2010.

MY COMMISSION EXPIRES June 4, 2012  
[Signature]  
NOTARY PUBLIC FOR THE STATE OF WASHINGTON, RESIDING IN  
UMATILLA, OR



SHARED VISION. UNIFIED APPROACH.  
Architecture • Engineering  
Land Surveying • Planning  
Environmental Services  
www.USKH.com

5 North Colville  
Walla Walla, WA 99362  
(509) 522-4843

REGISTERED  
PROFESSIONAL  
LAND SURVEYOR

[Signature]  
OREGON  
JULY 26, 1988  
PAUL W.P. TOMKINS  
2360

enclosure 6/30/12  
Date Stamped: 11/20/10

Project:  
A PARTITION PLAT OF TAX  
LOT 804, BEING LOCATED IN  
THE NW1/4, NW 1/4, THE  
NE 1/4, NW 1/4, THE SW  
1/4, NW 1/4, THE SE 1/4,  
NW 1/4, THE NW 1/4, SW  
1/4, THE NE 1/4, SW 1/4,  
AND THE SW 1/4, SW 1/4,  
ALL IN SEC. 5 OF T5N,  
R35E, WM, UMATILLA CO. OR

Client  
BOB BUCHANNAN  
NORTH SLOPE PROPERTIES  
83501 LOWER DRY. CR. RD.  
MILTON FREEWATER, OR

SECTION INDEX

X	X		
X	X		
X	X		
X			

SEC. 5, T5N, R35E, W.M.

Project Mgr.	PWPT
Drawn	PWPT
Checked	GEF
Date	11-30-10
Scale	1" = 500'

CAD File:  
7 HILLS PART PLAT SEPT  
2010.DWG

Sheet Contents:  
7 HILLS PART PLAT SEPT  
2010.DWG

Sheet No.: 3 OF 3

U.S.K.H. W.O.  
909701

I CERTIFY THIS IS A TRUE AND EXACT  
COPY OF THE ORIGINAL.  
[Signature]  
PAUL W.P. TOMKINS  
Umatilla County Surveyor

12-10  
Drawn by SK  
Date 10-18-10