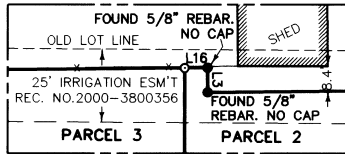


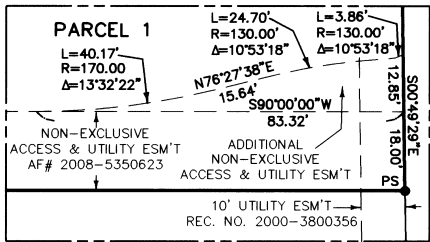
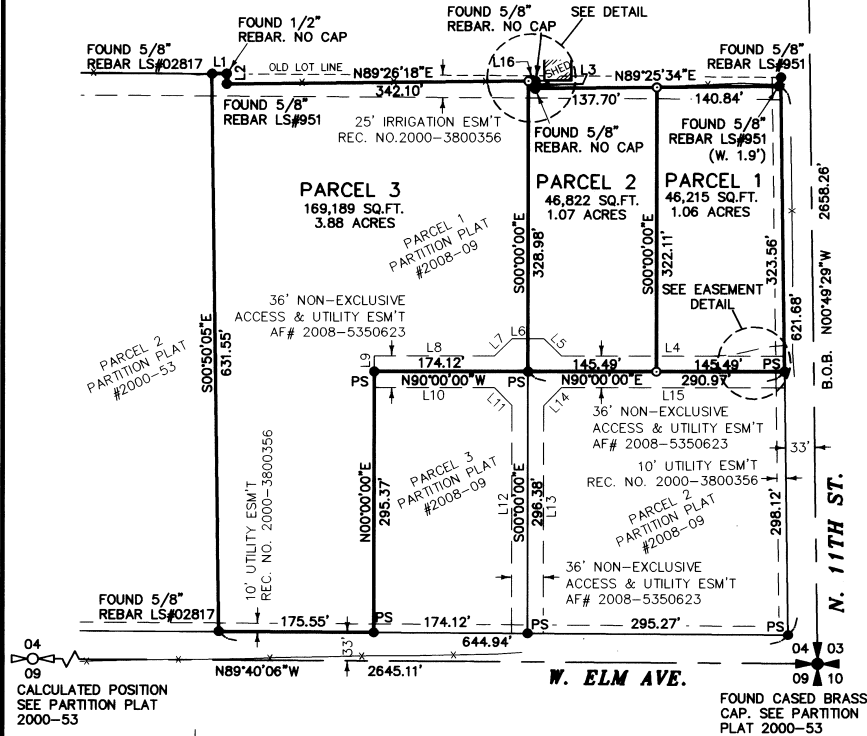
PARTITION PLAT NO. 2009-22

A REPLAT OF PARCEL 1, PARTITION PLAT NO. 2008-09
 S.E. 1/4 OF THE S.E. 1/4, SEC. 4, T. 4N., R. 28 E., W.M.
 CITY OF HERMISTON
 UMATILLA COUNTY, OREGON



DETAIL
SCALE: 1" = 30'

FOUND ALUMINUM CAP
1/2" BELOW ASPHALT SURFACE.
SEE PARTITION PLAT 2000-53



EASEMENT DETAIL
SCALE: 1" = 20'

SCALE 1" = 100'



BASIS OF BEARING
PARTITION PLAT NO. 2000-53

EQUIPMENT USED
A THREE-SECOND TOTAL STATION
TOPCON RTK GPS

NOTES

I DO CERTIFY THAT THIS IS A TRUE AND EXACT COPY OF THE ORIGINAL PARTITION PLAT AS FILED FOR 11TH & ELM PROPERTIES, LLC IN UMATILLA COUNTY, OREGON.

ROBERT H. STRATTON, PLS 1111

REGISTERED PROFESSIONAL LAND SURVEYOR

ROBERT H. STRATTON
1111
RENEWAL JUNE 30, 2010

DESCRIPTION

PARCEL 1 OF PARTITION PLAT NO. 2008-09 (INSTRUMENT NO. 2008-5350623 OFFICE OF UMATILLA COUNTY RECORDS) LOCATED IN THE SOUTHEAST QUARTER OF THE SOUTHEAST QUARTER OF SECTION 4, TOWNSHIP 4 NORTH, RANGE 28 EAST OF THE WILLAMETTE MERIDIAN, UMATILLA COUNTY, OREGON.

DEDICATION

I, WE, MEMBERS OF 11TH & ELM PROPERTIES, LLC, DO HEREBY DEDICATE TO THE PUBLIC FOREVER ALL STREET RIGHT-OF-WAY SHOWN WITHIN THIS PLAT, AND DO HEREBY GRANT ALL EASEMENTS, NOT PREVIOUSLY GRANTED OR CONVEYED, AS SHOWN OR NOTED WITHIN THIS PLAT. I, WE, TOO, HEREBY, ACKNOWLEDGE THAT I, WE HAVE CAUSED THIS PLAT TO BE CREATED AND RECOGNIZE THIS PLAT AS THE OFFICIAL PLAT AND MAP OF THE PARTITION FILED IN THE COUNTY OF UMATILLA, STATE OF OREGON.

11TH & ELM PROPERTIES, LLC

MEMBER, Peter Loues DATE 6/23/09

ACKNOWLEDGMENT

STATE OF OREGON
COUNTY OF DESCHUTES

I CERTIFY THAT I KNOW OR HAVE SATISFACTORY EVIDENCE THAT PETER LOUES, MEMBER OF 11TH & ELM PROPERTIES, LLC, SIGNED THIS PARTITION PLAT, ON OATH STATED THAT HE WAS AUTHORIZED TO EXECUTE THIS AND ACKNOWLEDGED IT AS THE MANAGING MEMBER OF 11TH & ELM PROPERTIES, LLC TO BE THE FREE AND VOLUNTARY ACT OF SUCH PARTY FOR THE USES AND PURPOSES MENTIONED ON THIS PARTITION PLAT.

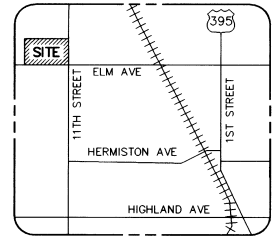
DATE: JUNE 23, 2009
Finda Sinclair DECEMBER 21, 2012

NOTARY PUBLIC, Comm. No. 434730 MY APPOINTMENT EXPIRES

LEGEND

- = SET 5/8" x 30" REBAR W/ YELLOW PLASTIC CAP MARKED "STRATTON 1111"
- = FOUND AS INDICATED
- PS● = PREVIOUSLY SET 5/8" x 30" REBAR W/YELLOW PLASTIC CAP MARKED "STRATTON 1111" FOR PARTITION PLAT NO. 2008-09
- B.O.B. = BASIS OF BEARING
- ▨ = SHED

LINE	LENGTH	BEARING
L1	16.62	N89°40'49"W
L2	11.41	S00°49'45"E
L3	8.32	S00°00'00"E
L4	252.71	N90°00'00"E
L5	28.28	N45°00'00"W
L6	36.00	N90°00'00"E
L7	28.28	N45°00'00"E
L8	136.12	S90°00'00"E
L9	18.00	N00°00'00"E
L10	136.12	N90°00'00"E
L11	28.28	S45°00'00"E
L12	258.28	S00°00'00"E
L13	258.49	S00°00'00"E
L14	28.28	N45°00'00"E
L15	253.23	N90°00'00"E
L16	7.79	N89°26'18"E



VICINITY SKETCH
NOT TO SCALE

APPROVALS

I CERTIFY I HAVE EXAMINED AND APPROVED THIS PARTITION PLAT ON THIS 10 DAY OF JUNE, 2009
Margaret Saylor
 CITY OF HERMISTON PLANNING COMMISSION

I CERTIFY I HAVE EXAMINED AND APPROVED THIS PARTITION PLAT ON THIS 29 DAY OF JUNE, 2009
Dawn H. Kelly
 UMATILLA COUNTY SURVEYOR

I CERTIFY I HAVE EXAMINED AND APPROVED THIS PARTITION PLAT ON THIS 9 DAY OF JUNE, 2009
Cheryl Wilson
 HERMISTON IRRIGATION DISTRICT

I CERTIFY THAT TAXES ARE PAID ON THIS 29 DAY OF JUNE, 2009
Beth Ann Emig
 UMATILLA COUNTY TAX COLLECTOR

RECORDING INFORMATION SEAL

STATE OF OREGON, COUNTY OF UMATILLA }
 I certify that this instrument was received and recorded
 ON June 29, 2009
 at 11:45 o'clock Am., in the record of PLATS of said County.
 YEAR NUMBER Slide
 2009 22

OFFICE OF COUNTY RECORDS

By: Jean Hemphill, Records Officer
 Fees \$ 50.00 No. 2009-5330165

SURVEY FOR

11TH & ELM PROPERTIES, LLC

INDEX

1/4	1/4	SEC	T.	R.
		4	4 N	28 E

STRATTON SURVEYING & MAPPING, PC
 7525 W. DESCHUTES PL. UNIT 1C
 KENNEWICK, WA. 99336
 (509) 735-7364
 FAX: (509) 735-6560
 survey@strattonsurvey.com

3990SP2.DWG
 DATE: 6/1/09
 DRAWN BY: RHS/DA
 SHEET 1 OF 1
 JOB # 3990

09-115-B