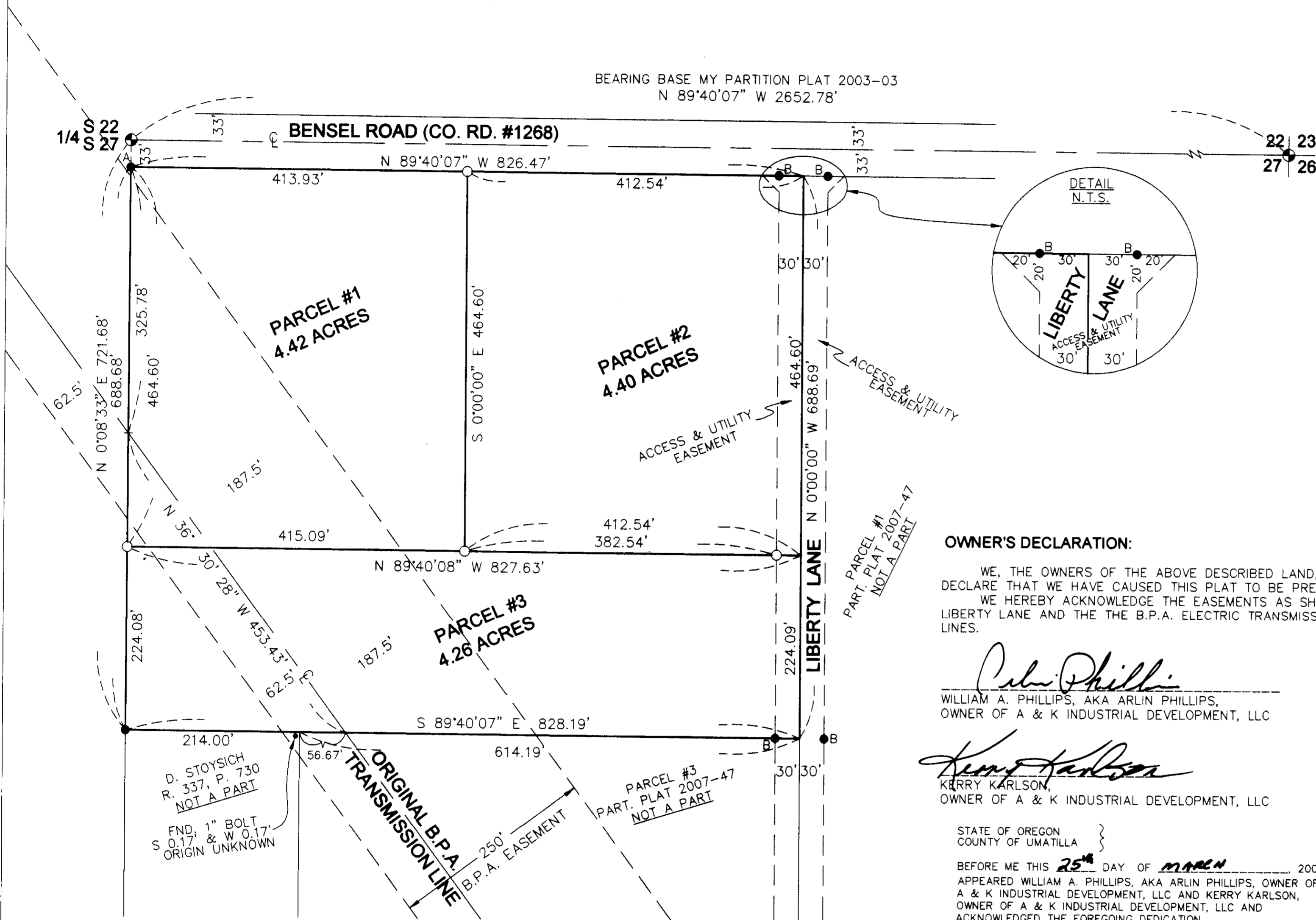


2009-07

PARTITION PLAT 2009-07

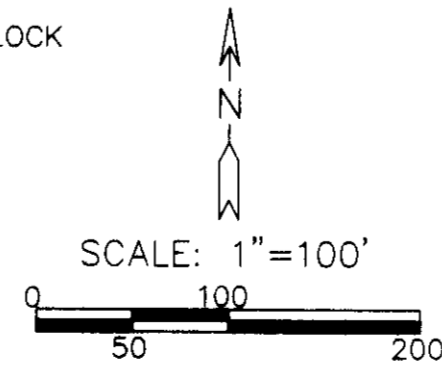
A REPLAT OF PARCEL 2 OF PARTITION PLAT 2007-47
 IN NW 1/4, NE 1/4, SEC. 27, T 5 N,
 R 28 E, W.M., UMATILLA COUNTY, OREGON
 #LD-5N-740-08

BEARING BASE MY PARTITION PLAT 2003-03
 N 89°40'07" W 2652.78'



LEGEND:

- FND. 5/8" IRON REBAR KRUMBEIN SET IN 1975 SURVEY FOR BENSEL OR 1975 SURVEY FOR BLOCK
- ▲ FND. 5/8" IRON REBAR ME, PARTITION PLAT 2003-03
- FND. 5/8" IRON REBAR ME, PARTITION PLAT 2007-47
- SET 5/8"x30" IRON REBAR WITH PLASTIC CAP #951
- FND. 2 1/2" B.C. KRUMBEIN SET IN 1972 (REV. 1975) SURVEY FOR BENSEL



OWNER'S DECLARATION:

WE, THE OWNERS OF THE ABOVE DESCRIBED LAND, HEREBY DECLARE THAT WE HAVE CAUSED THIS PLAT TO BE PREPARED. WE HEREBY ACKNOWLEDGE THE EASEMENTS AS SHOWN FOR LIBERTY LANE AND THE THE B.P.A. ELECTRIC TRANSMISSION LINES.

William A. Phillips
 WILLIAM A. PHILLIPS, AKA ARLIN PHILLIPS,
 OWNER OF A & K INDUSTRIAL DEVELOPMENT, LLC

Kerry Karlson
 KERRY KARLSON,
 OWNER OF A & K INDUSTRIAL DEVELOPMENT, LLC

STATE OF OREGON }
 COUNTY OF UMATILLA }
 BEFORE ME THIS 25th DAY OF MARCH, 2009
 APPEARED WILLIAM A. PHILLIPS, AKA ARLIN PHILLIPS, OWNER OF A & K INDUSTRIAL DEVELOPMENT, LLC AND KERRY KARLSON, OWNER OF A & K INDUSTRIAL DEVELOPMENT, LLC AND ACKNOWLEDGED THE FOREGOING DEDICATION.

Donna M. Brown
 NOTARY PUBLIC FOR OREGON
 DONNA M. BROWN
 PRINTED NAME
 COMMISSION NO. 430688
 MY COMMISSION EXPIRES JULY 19, 2012

APPROVALS:

UMATILLA COUNTY SURVEYOR
 APPROVED THIS 31 DAY OF MARCH, 2009.
David H. Klein
 UMATILLA COUNTY SURVEYOR

HERMISTON IRRIGATION DISTRICT
 APPROVED THIS 25th DAY OF MARCH, 2009.
Chuck Wilcox
 MANAGER

UMATILLA COUNTY PLANNING DEPARTMENT
 APPROVED THIS 1st DAY OF APRIL, 2009.
Kep. Mabbitt
 UMATILLA COUNTY PLANNING DIRECTOR

UMATILLA COUNTY TAX COLLECTOR
 TAXES ARE PAID IN FULL
 APPROVED THIS 2nd DAY OF APRIL, 2009.
Bertina Smith by Kristin Shannon
 UMATILLA COUNTY TAX COLLECTOR

STATE OF OREGON, }
 COUNTY OF UMATILLA }
 I certify that this instrument was received and recorded

ON April 2, 2009
 at 1:45 o'clock Pm., in the record of
 PLATS of said County.
 YEAR 2009 NUMBER 07 Slide

OFFICE OF COUNTY RECORDS
 By: *Shirley Chambers* Records Officer
 Fees \$ 50 No. 2009-5490437

SURVEYOR'S CERTIFICATE:

I, G. DENNIS EDWARDS, AM A REGISTERED SURVEYOR OF THE STATE OF OREGON AND HAVE MARKED WITH LEGAL MONUMENTS THE LAND SHOWN ON THIS PLAT. I SURVEYED THIS TRACT IN PARTITION PLAT 2007-47. THE DESCRIPTION OF THIS TRACT IS PARCEL 2 OF PARTITION PLAT 2007-47 IN THE NW 1/4 OF THE NE 1/4 OF SECTION 27, T 5 N, R 28 E, WILLAMETTE MERIDIAN, UMATILLA COUNTY, OREGON.

REGISTERED PROFESSIONAL LAND SURVEYOR
G. Dennis Edwards
 OREGON
 JULY 16, 1971
 G. DENNIS EDWARDS
 9 5 1
 RENEWS 12/31/2008

JOB# S0901015
 EDWARDS SURVEYING P.O. BOX 763
 541-567-3336 HERMISTON, OREGON 97838
 DRAWN BY: JWC BY

Umatilla County Surveyor
 Date 4-09
 Rec'd by KF
 No. 09-52-B