

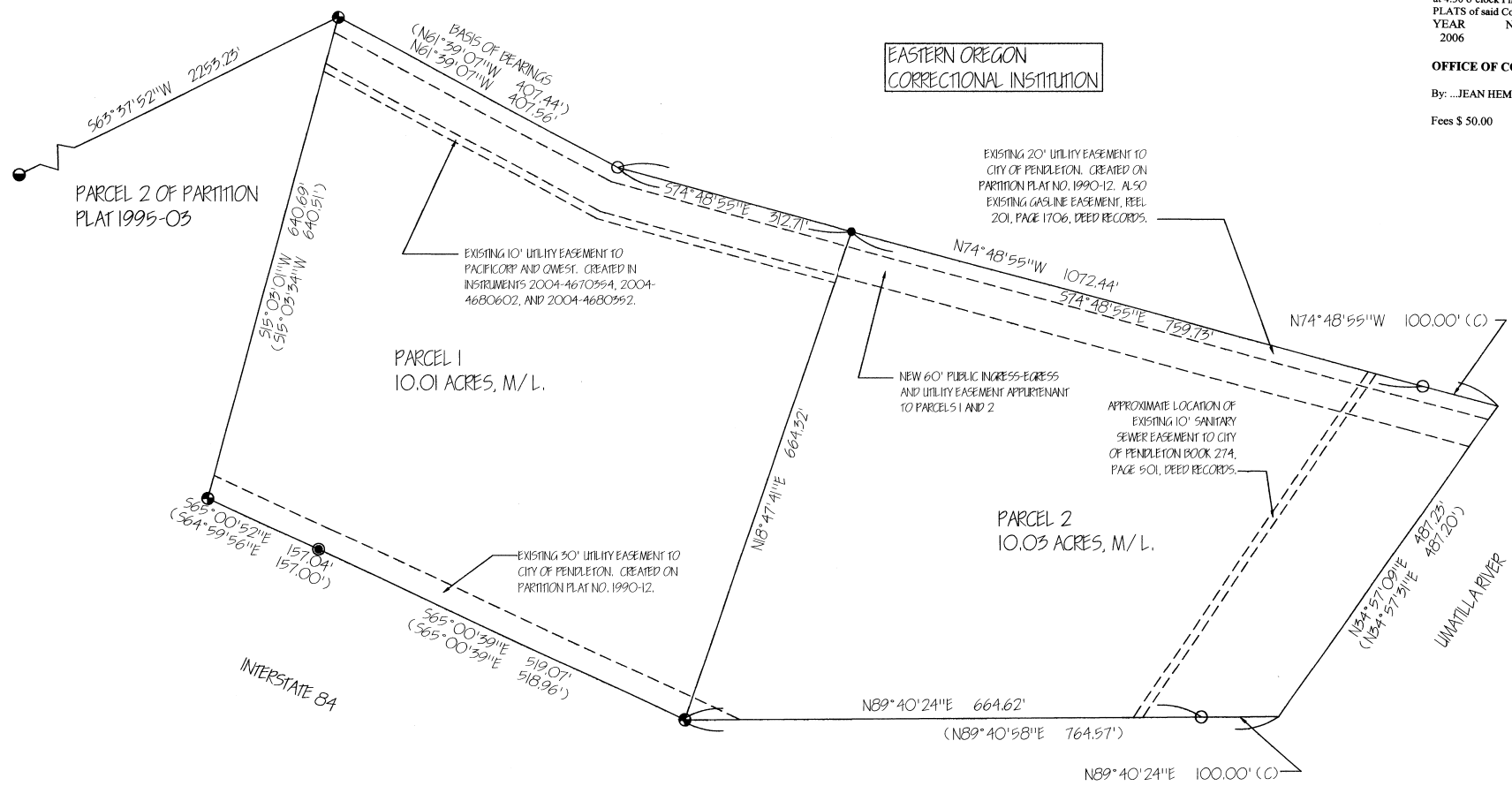
PARTITION PLAT FOR THE CITY OF PENDLETON
 500 SW DORRIN AVE, PENDLETON, OREGON 97801
 A PARTITION OF PARCEL 3 OF PARTITION PLAT 1995-03,
 LOCATED IN THE N 1/2 SECTION 9 AND THE NE 1/4 SECTION 8,
 T2N., R32E., W.M. UMATILLA COUNTY, OREGON.
 FEBRUARY, 2006

PARTITION PLAT NO. 2006-16
 SHEET 1 OF 2

STATE OF OREGON }
 COUNTY OF UMATILLA }
 I certify that this instrument was received and
 recorded
 ON June 26, 2006
 at 4:30 o'clock P.m., in the record of
 PLATS of said County.
 YEAR NUMBER Slide
 2006 16

OFFICE OF COUNTY RECORDS
 By: ...JEAN HEMPHILL... Records Officer
 Fees \$ 50.00 No. 2006-5030278

EASTERN OREGON
 CORRECTIONAL INSTITUTION



- LEGEND
- - FOUND 2-3/8" BRASS CAP MARKED "12N1832E 1/4 S8, S9, 2002 PLS 1106"
 - - SET 5/8" BY 30" IRON PIN WITH 1/2" YELLOW PLASTIC CAP MARKED "PLS 2824 COP"
 - - FOUND 5/8" IRON PIN WITH 1/2" YELLOW PLASTIC CAP MARKED "W.R. WELLS, PLS 1106"
 - - FOUND STATE HIGHWAY DIVISION MONUMENT, 5/8" IRON PIN WITH 1/2" ALUM. CAP.
 - - FOUND 5/8" IRON PIN WITH 1/2" ALUM. CAP MARKED "KILMURDIN ENG. PLS 933"
- (XOX) - RECORD DIMENSIONS PER PARTITION PLAT NO. 1995-03
 (C) - CALCULATED LOCATION

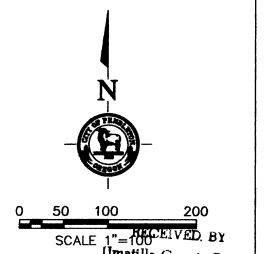
I CERTIFY THIS IS AN EXACT COPY OF PARTITION PLAT NO. 2006-16

TIMOTHY M. SIMONS, P.E., PLS

REGISTERED
 PROFESSIONAL
 LAND SURVEYOR
 OREGON
 JUNE 30, 1997
 TIMOTHY M. SIMONS
 2824
 RENEWAL DATE: 06/30/06
 DATE SIGNED: 06/20/06



CITY OF PENDLETON
 ENGINEERING DEPARTMENT
 PARTITION PLAT
 CITY OF PENDLETON



RECEIVED BY
 Umatilla County Surveyor
 Date: 7-06
 Record by: KK
 No.: 06-467-8
 DATE: 02/09/06
 DN BY: WCC CK BY: TMS
 DWG No:
 PAGE:

PARTITION PLAT FOR THE CITY OF PENDLETON
500 SW DORION AVE., PENDLETON, OREGON 97801
A PARTITION OF PARCEL 3 OF PARTITION PLAT 1995-03,
LOCATED IN THE N 1/2 SECTION 9 AND THE NE 1/4 SECTION 8,
12N., R32E., W.M. UMATILLA COUNTY, OREGON.
FEBRUARY, 2006

PARTITION PLAT NO. 2006-16
SHEET 2 OF 2

STATE OF OREGON, }
COUNTY OF UMATILLA }
I certify that this instrument was received and recorded
ON June 26, 2006
at 4:30 o'clock P.m., in the record of
PLATS of said County.
YEAR NUMBER Slide
2006 16

OFFICE OF COUNTY RECORDS
By: JEAN HEMPHILL, Records Officer
Fees \$ 50.00 No. 2006-5030278

APPROVALS

CITY OF PENDLETON PLANNING COMMISSION
THIS MINOR PARTITION PLAT IS APPROVED THIS 20 DAY OF JUNE, 2006.

Vivian R. Cypel PLANNING COMMISSION CHAIRPERSON
Paul H. Keller PLANNING DIRECTOR

UMATILLA COUNTY SURVEYOR
THIS MINOR PARTITION PLAT IS APPROVED THIS 26 DAY OF JUNE, 2006.

David H. Keller
COUNTY SURVEYOR

UMATILLA COUNTY TAX COLLECTOR
TAXES ARE CURRENT

Rhonda J. Schultz, by Margie Feulton
COUNTY TAX COLLECTOR

SURVEYORS CERTIFICATE & NARRATIVE

I HEREBY CERTIFY THAT I HAVE CORRECTLY SHOWN PARCELS 1 AND 2 OF THIS MINOR PARTITION PLAT IN ACCORDANCE WITH ORS CHAPTER 92, AS REVISED, AND CITY OF PENDLETON ORDINANCE. THE BOUNDARY BETWEEN PARCELS 1 AND 2 WAS SURVEYED AND MONUMENTED AS PART OF THIS PARTITION PLAT.

THE SURVEY WAS MADE AT THE REQUEST OF THE CITY MANAGER FOR THE CITY OF PENDLETON TO DIVIDE PARCEL 3 OF PARTITION PLAT 1995-03 INTO 2 SEPARATE PARCELS. ADDITIONALLY, A NEW 40 FOOT INGRESS-EGRESS AND UTILITY EASEMENT WAS CREATED ALONG A PORTION OF THE NORTHERLY LINE OF THE PROPOSED PARCELS.

THIS SURVEY WAS MADE BY OPEN FIELD TRAVERSE WITH RADIAL TIES WITH A LEICA TCM 1100 TOTAL STATION. ANGLES WERE DOUBLED WHEN TYING CONTROL POINTS AND MONUMENTS AND SETTING THE NEW BOUNDARY MONUMENT. BEARINGS ARE BASED ON PARTITION PLAT NO. 1995-03.

REAL PROPERTY DESCRIPTION OF PARTITIONED LANDS

PARCEL 3 OF PARTITION 1995-03, LOCATED IN THE NORTH HALF OF SECTION 9, TOWNSHIP 2 NORTH RANGE 32 EAST OF THE WILLAMETTE MERIDIAN, UMATILLA COUNTY, OREGON.

Timothy M. Simons
TIMOTHY M. SIMONS, PE, PLS

OWNERS DECLARATION AND EASEMENT DEDICATION

THE CITY OF PENDLETON, A OREGON MUNICIPAL CORPORATION, DOES HEREBY ACKNOWLEDGE IT HAS CAUSED THIS PARTITION PLAT TO BE PREPARED AND THIS LAND PARTITIONED IN ACCORDANCE WITH ORS CHAPTER 92, AS REVISED, AND PENDLETON CITY ORDINANCE. THE CITY OF PENDLETON HEREBY DESIGNATES FOR THE USE AND BENEFIT OF THE OWNERS OF PARCELS 1 AND 2, THEIR HEIRS, SUCCESSORS AND ASSIGNS, THE NEW PRIVATE INGRESS-EGRESS AND UTILITY EASEMENT IDENTIFIED ON SHEET 1 OF 2.

THE CITY OF PENDLETON, A OREGON MUNICIPAL CORPORATION HEREBY RETAINS AN APPURTENANT EASEMENT ACROSS THE PARCELS DESIGNATED "NEW 60' PUBLIC INGRESS-EGRESS AND UTILITY EASEMENT APPURTENANT TO PARCELS 1 AND 2", SHOWN ON SHEET 1 OF 2. THE DEDICATED EASEMENT IS PERPETUAL AND NON-EXCLUSIVE. THE EASEMENT IS FOR THE CONSTRUCTION, RECONSTRUCTION, MAINTENANCE, REPAIR AND SERVICE OF UTILITY LINES. BURIED UTILITY LINES SHALL BE CONSTRUCTED AND MAINTAINED AS TO DO THE LEAST DAMAGE TO THE PREMISES. CONSISTENT WITH THE PROPER USE, OPERATION AND MAINTENANCE OF SAID UTILITY LINES AS DETERMINED BY GRANTEE, THE GRANTEE, ITS SUCCESSORS AND ASSIGNEES, SHALL HAVE THE RIGHT TO ENTER UPON SAID EASEMENT AT ANY AND ALL TIMES IN THE FUTURE FOR THE PURPOSE OF INSPECTION, CONSTRUCTION, RECONSTRUCTION, INSTALLATION, OPERATION, MAINTENANCE, REPAIR AND SERVICE OF SAID UTILITY LINES. IF THE SURFACE OF THE GROUND IS DISTURBED, THEN IT SHALL BE RESTORED AS NEARLY AS PRACTICABLE TO ITS ORIGINAL CONDITION. THE GRANTEE AGREES TO KEEP THE EASEMENT FREE FROM ANY AND ALL TREES AND STRUCTURES.

CITY OF PENDLETON

Phillip W. Hawk MAYOR
Judi A. Zoske CITY RECORDER

ON THIS 20 DAY OF JUNE, 2006, PERSONALLY APPEARED THE ABOVE NAMED MAYOR AND CITY RECORDER OF THE CITY OF PENDLETON, AND EACH BEING FULLY SWORN, DID SAY THAT THEY ARE THE MAYOR AND CITY RECORDER OF THE CITY OF PENDLETON, A MUNICIPAL CORPORATION IN THE STATE OF OREGON, AND THIS INSTRUMENT WAS SIGNED ON BEHALF OF SAID CORPORATION BY AUTHORITY OF ITS COUNCIL.

NOTARY PUBLIC FOR OREGON Linda M. Anderson
MY COMMISSION EXPIRES April 12, 2010



RECEIVED BY
Umatilla County Surveyor
Date 7-06
Recorded KK
No. 06-467-B

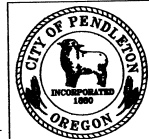
I CERTIFY THIS IS AN EXACT COPY OF PARTITION PLAT NO. 2006-16

Timothy M. Simons
TIMOTHY M. SIMONS, PE, PLS

REGISTERED PROFESSIONAL LAND SURVEYOR

OREGON
JUNE 30, 1997
TIMOTHY M. SIMONS
2824

RENEWAL DATE: 06/30/06
DATE SIGNED: 06/20/06



CITY OF PENDLETON
ENGINEERING DEPARTMENT

PARTITION PLAT
CITY OF PENDLETON

DATE: 02/09/06
DN BY: WCS CK BY: TMS
DWG No:
PAGE: