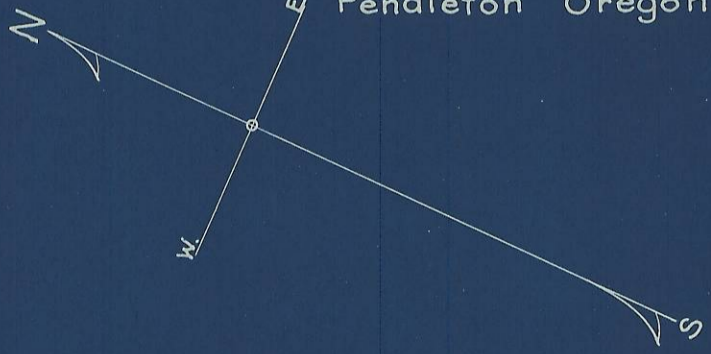


PLAT  
OF  
FAIR STREET

From Mill Street to River

Oct. 21, 1910. Scale 100' = 1" Willard Bradley

Note: This is a copy of the plat found at page 86 of the Milton City Plat Book at Milton Oregon. However this plat does not appear on the public official records of Umatilla County Oregon.  
Hartman Abstract Company  
Pendleton Oregon.



11-160-A  
(5N 35 12 AC)