

- LEGEND
- Embankment
  - Excavation
  - Dumped riprap in plan
  - Levee-existing (Site Map & Plan)
  - Dumped riprap in section
  - Levee to be raised (Site Map)
  - Excavation (Site Map)
  - Levee to be repaired
  - Dumped riprap (Site Map)
  - Railroad
  - Right-of-way
  - Utilities
  - Fences

PLAN  
SCALE IN FEET  
0 800 1600 2400

DEPARTMENT OF THE ARMY  
OFFICE OF THE WALLA WALLA DISTRICT ENGINEER  
NORTH PACIFIC DIVISION

REAL ESTATE  
PENDLETON LEVEES  
CHANNEL AND LEVEE RIGHT OF WAY  
INDEX MAP  
UMATILLA COUNTY, OREGON

DRAWN BY: C.V.C.  
TRACED BY: C.V.C.  
CHECKED BY: H.A.L.  
SUBMITTED BY: *Harvey A. Pender*  
CHIEF, INDUSTRIAL SECTION

APPROVED BY: *Monte T. Gowan*  
CHIEF, REAL ESTATE DIVISION

APPROVED BY: *[Signature]*  
COLONEL, CORPS OF ENGINEERS, PORTLAND DISTRICT ENGINEER

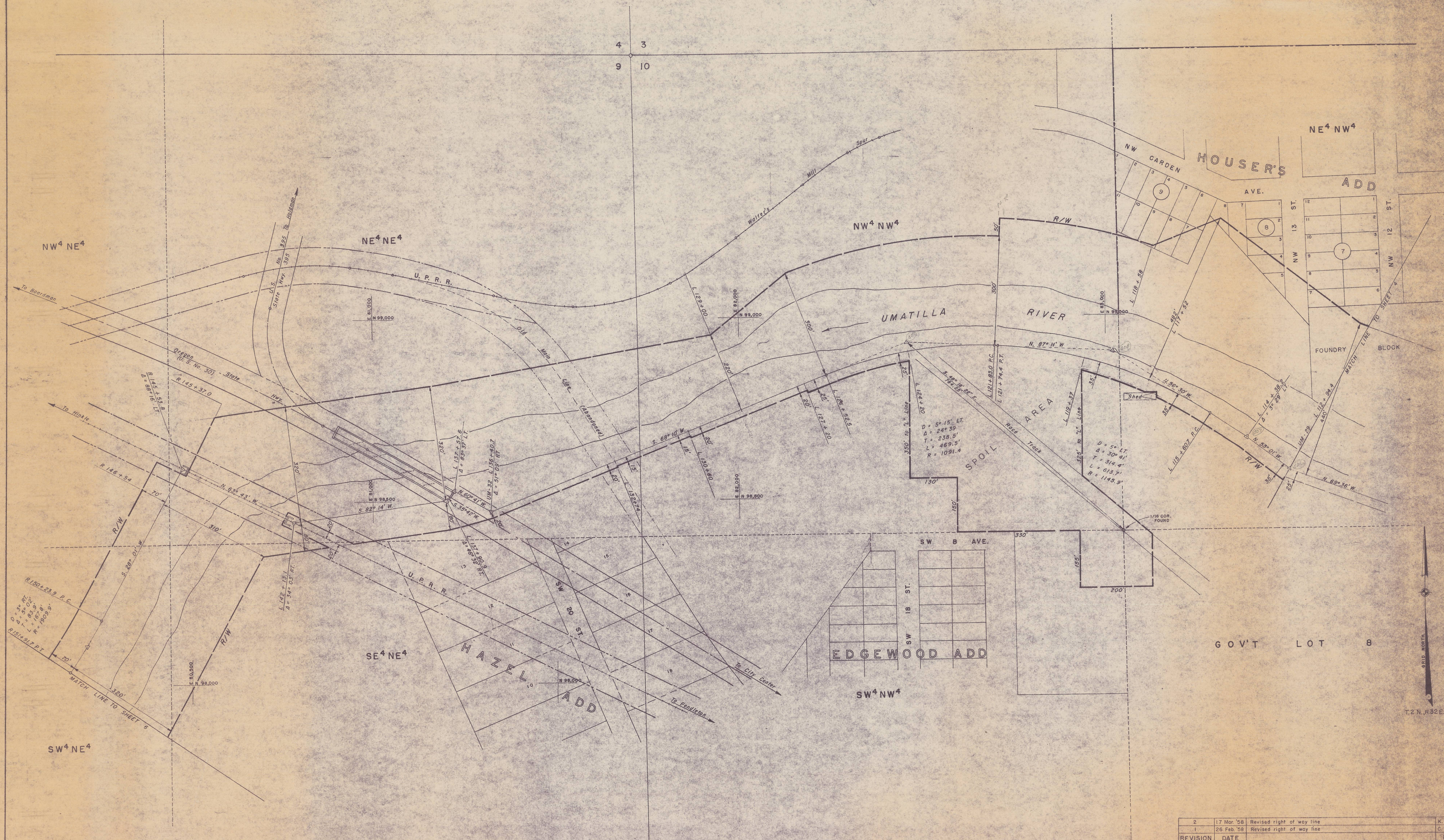
DATE: 15 JAN. 1958

SCALE IN FEET  
800 400 0 800 1600

SHEET 1 OF 7 DRAWING NO. WW-RE-179



4 3  
9 10



2	17 Mar '58	Revised right of way line	K.D.M.
1	26 Feb '58	Revised right of way line	C.V.C.
REVISION	DATE		BY

DEPARTMENT OF THE ARMY  
OFFICE OF THE WALLA WALLA DISTRICT ENGINEER  
NORTH PACIFIC DIVISION

REAL ESTATE  
PENDLETON LEVEES  
CHANNEL AND LEVEE RIGHT OF WAY  
UMATILLA RIVER  
UMATILLA COUNTY, OREGON

DRAWN BY: C.V.C.  
TRACED BY: C.V.C.  
CHECKED BY: H.A.L.  
SUBMITTED BY: *Harvey Anderson*  
CHIEF, CADASTRAL SECTION

RECOMMENDED BY: *Max K. Ryan*  
CHIEF, REAL ESTATE DIVISION

APPROVED BY: *[Signature]*  
COLONEL, CORPS OF ENGINEERS, DISTRICT ENGINEER

GATE 15 JAN. 1958

SCALE IN FEET  
100' 0' 100' 200'

SHEET 5 OF 11 DRAWING NO. WW-RE-17B

24-5439