

- LEGEND
- Embankment
 - Excavation
 - Dumped riprap in plan
 - Levee-existing (Site Map & Plan)
 - Dumped riprap in section
 - Levee to be raised (Site Map)
 - Excavation (Site Map)
 - Levee to be repaired
 - Dumped riprap (Site Map)
 - Railroad
 - Right-of-way
 - Utilities
 - Fences

DEPARTMENT OF THE ARMY
OFFICE OF THE WALLA WALLA DISTRICT ENGINEER
NORTH PACIFIC DIVISION

REAL ESTATE
PENDLETON LEVEES
CHANNEL AND LEVEE RIGHT OF WAY
INDEX MAP
UMATILLA COUNTY, OREGON

DRAWN BY: C.V.C.
TRACED BY: C.V.C.
CHECKED BY: H.A.L.
SUBMITTED BY: *Harvey A. Pender*
CHIEF, INDUSTRIAL SECTION

APPROVED BY: *Monte T. Gowan*
CHIEF, REAL ESTATE DIVISION

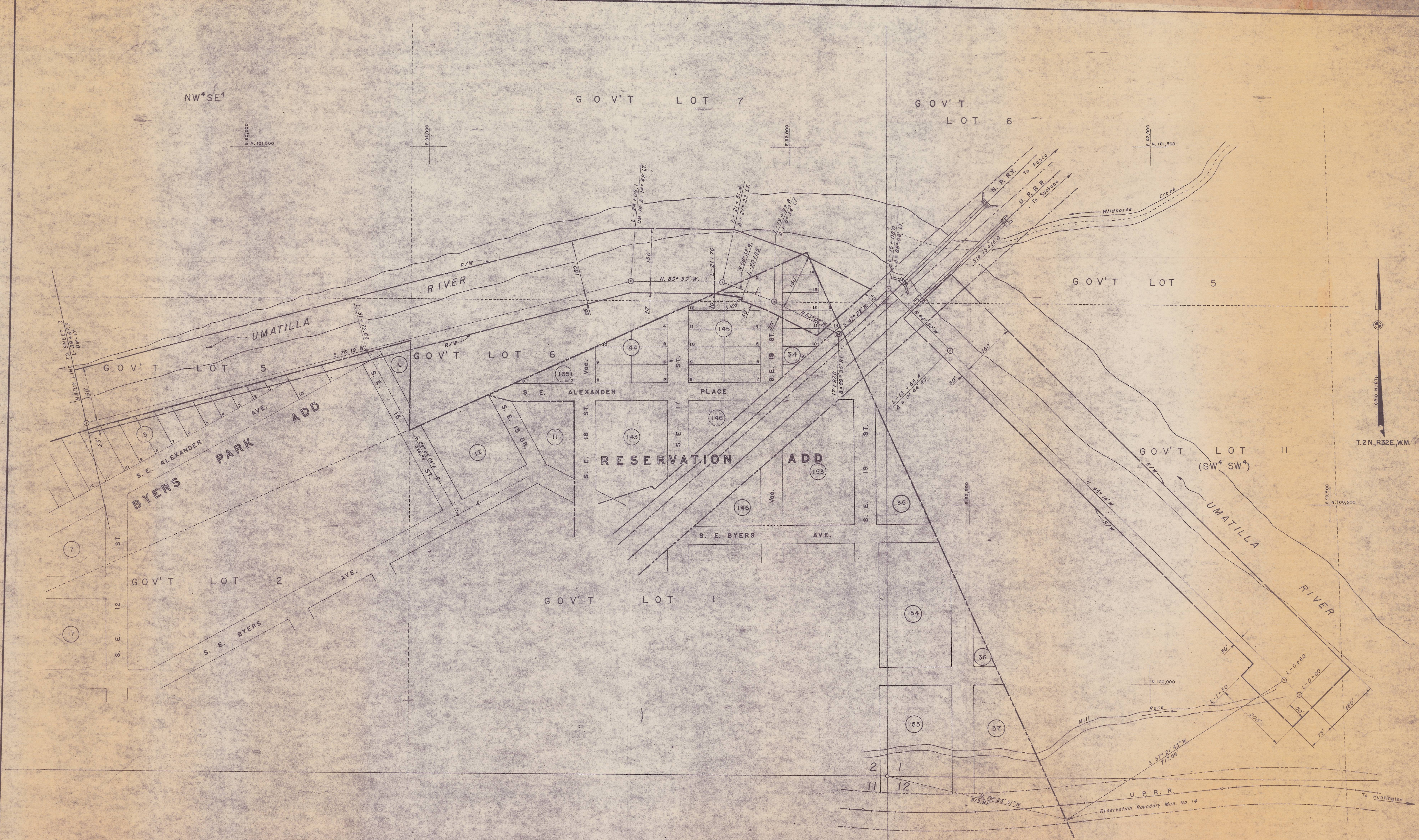
APPROVED BY: *[Signature]*
COLONEL, CORPS OF ENGINEERS, PORTLAND DISTRICT ENGINEER

DATE: 15 JAN. 1958

SCALE IN FEET
800 400 0 800 1600

SHEET 1 OF 7 DRAWING NO. WW-RE-179

24-5439



T.2N, R32E, W.M.

1	21 July 1958	Revised right of way line	C.V.C.
REVISION	DATE		BY
DEPARTMENT OF THE ARMY OFFICE OF THE WALLA WALLA DISTRICT ENGINEER NORTH PACIFIC DIVISION			
REAL ESTATE PENDLETON LEVEES CHANNEL AND LEVEE RIGHT OF WAY UMATILLA RIVER UMATILLA COUNTY, OREGON			
DRAWN BY: C.V.C. TRACED BY: C.V.C. CHECKED BY: H.A.L. SUBMITTED BY: <i>Nancy A. Pendleton</i> CHIEF, CADASTRAL SECTION RECOMMENDED BY: <i>May K. Jones</i> CHIEF, REAL ESTATE DIVISION	APPROVED BY: <i>[Signature]</i> DATE 15 JAN 1958 COLONEL, CORPS OF ENGINEERS, DISTRICT ENGINEER		
SCALE IN FEET 0 100 200			
SHEET 2 OF 7 DRAWING NO. WW-RE-125			

24-5439