

This map was prepared for Assessment & Taxation purposes only and was NOT prepared nor is it suitable for legal, engineering or surveying purposes.

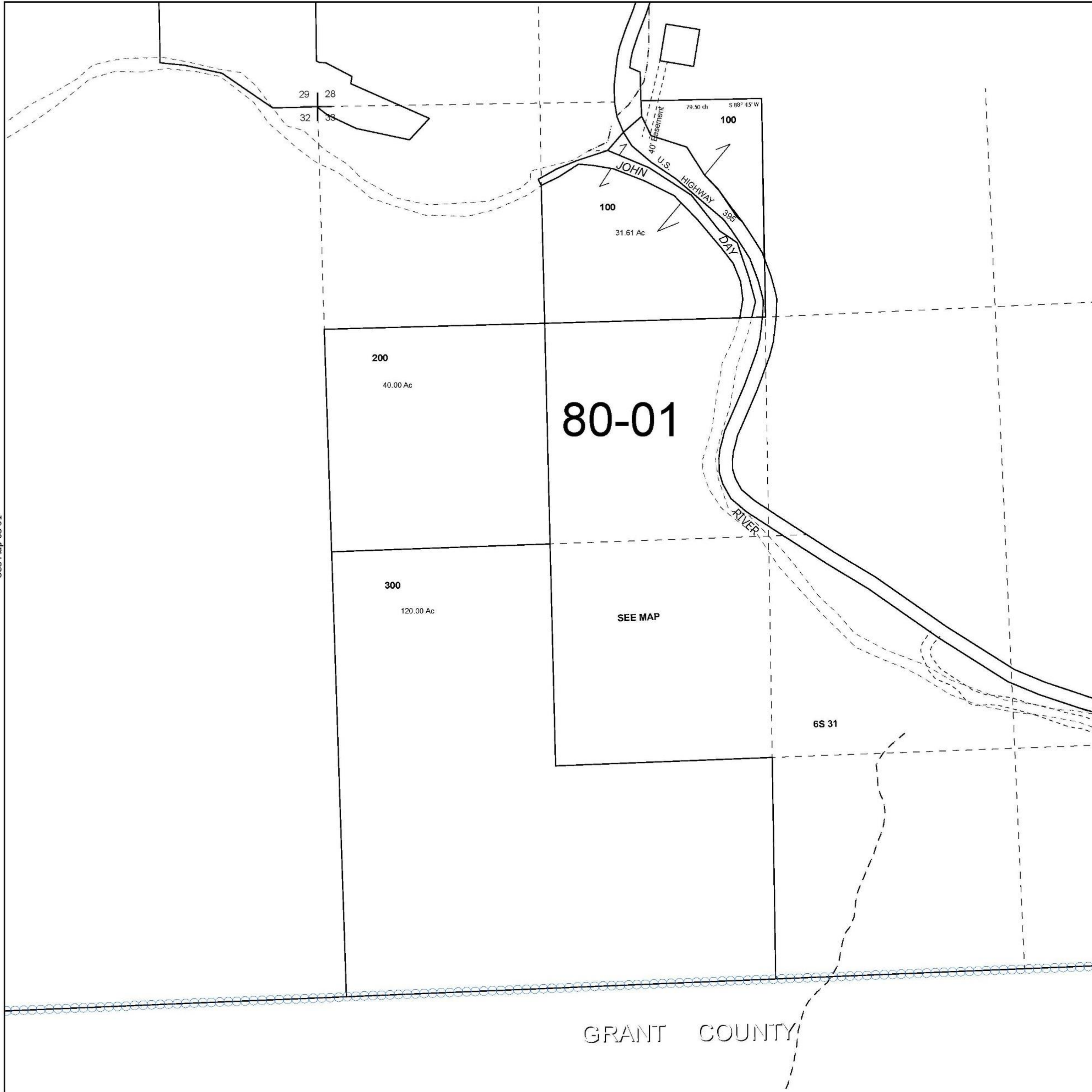
Cancelled Tax Lots

SEC 33 T6S R31E WM UMATILLA COUNTY

6S 31 33

SCALE 1" = 400'

See Map 6S 31



See Map 6S 31

See Map 6S 31

Revised 1/21/2025

6S 31 33