

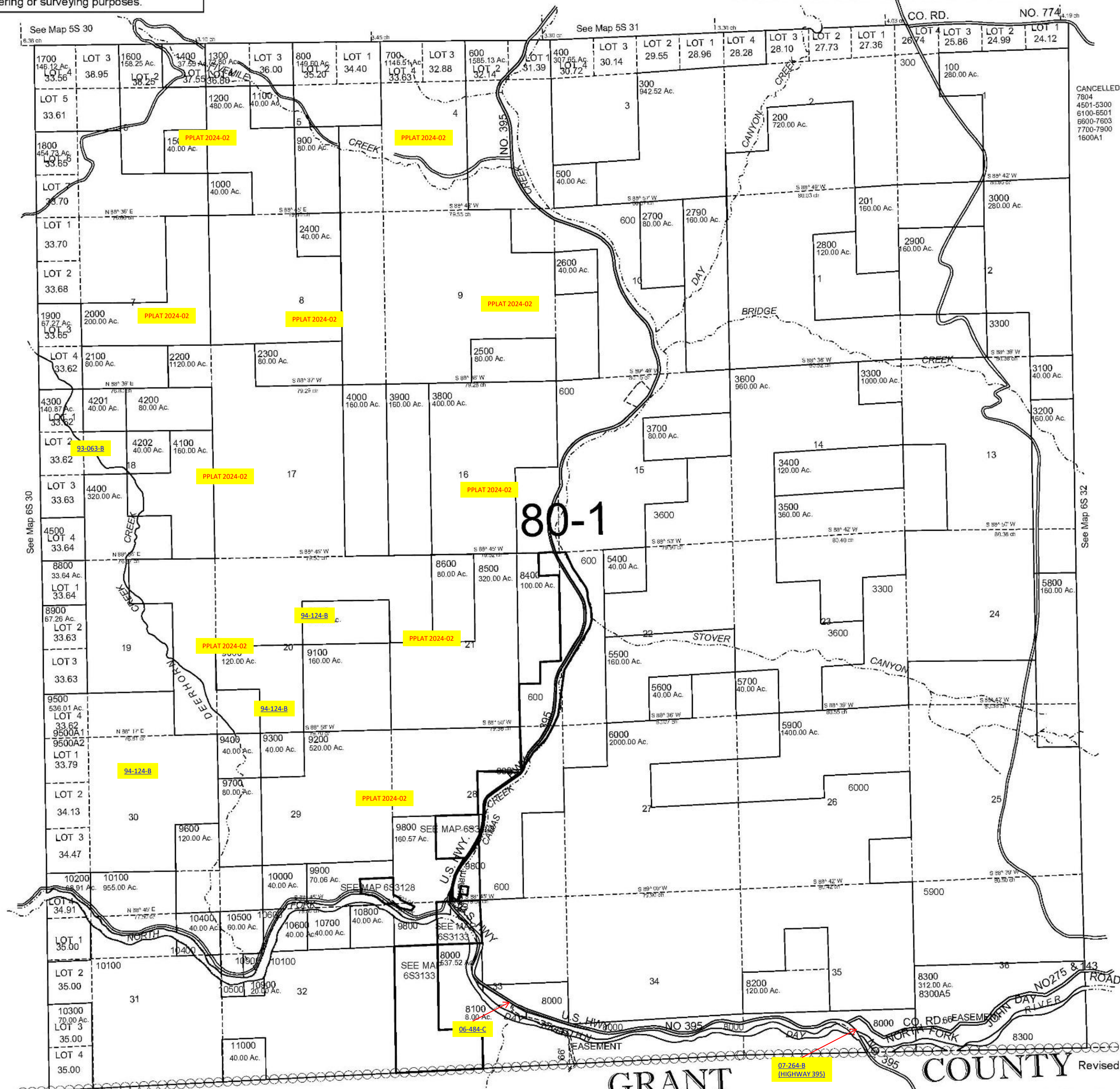
This map was prepared for Assessment & Taxation purposes only and was NOT prepared nor is it suitable for legal, engineering or surveying purposes.

# T6S R31E WM UMATILLA COUNTY

1"=2000'

## 6S 31

AFRIAL PHOTO NO 9P 5-12 21-28 & 10P 115-123



CANCELLED  
7804  
4501-5300  
6100-6501  
6900-7603  
7700-7900  
1600A1

# GRANT

# COUNTY

## 6S 31

Revised: 07-30-2021