

This map was prepared for Assessment & Taxation purposes only and was NOT prepared nor is it suitable for legal, engineering or surveying purposes.

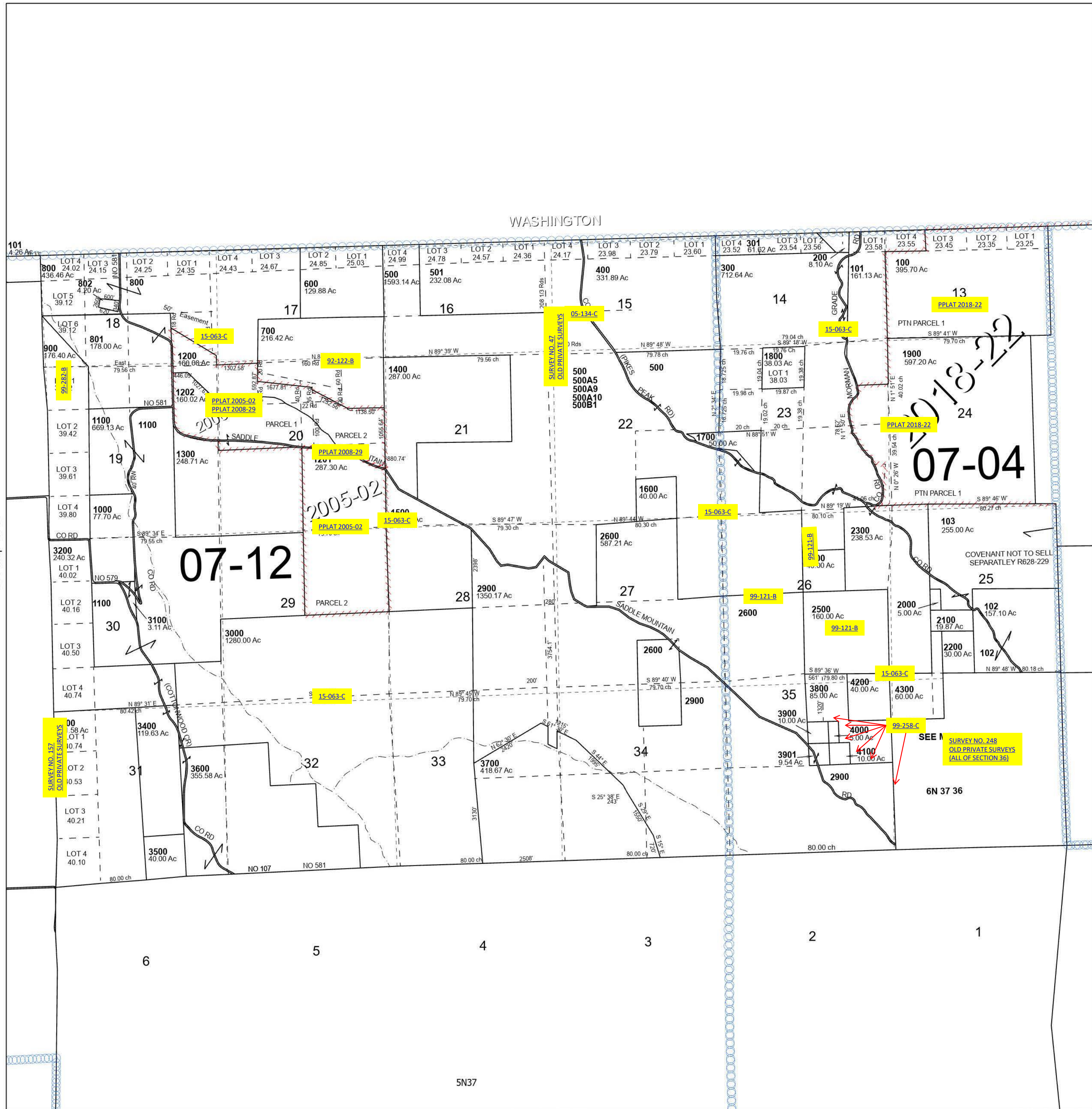
ALSO SEE SURVEYS 01-064-B, 03-023-C, 03-291-A, 09-010-C, 12-031-C, 15-063-C; CORNER RECORDS; G.L.O. SURVEYS

# T&N R27E WM UMATILLA COUNTY

SCALE 1" = 2,000'

6N 37

Cancelled Tax Lots  
2700  
2800  
3801



Revised 8/16/2023

See Map 5N 37

6N 37