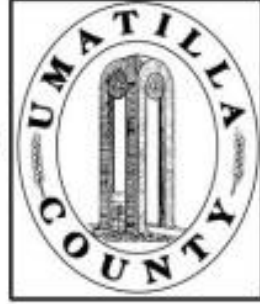


This map was prepared for Assessment purposes only.



NE 1/4 SEC 35 T 6N R 35 E WM UMATILLA COUNTY, OR

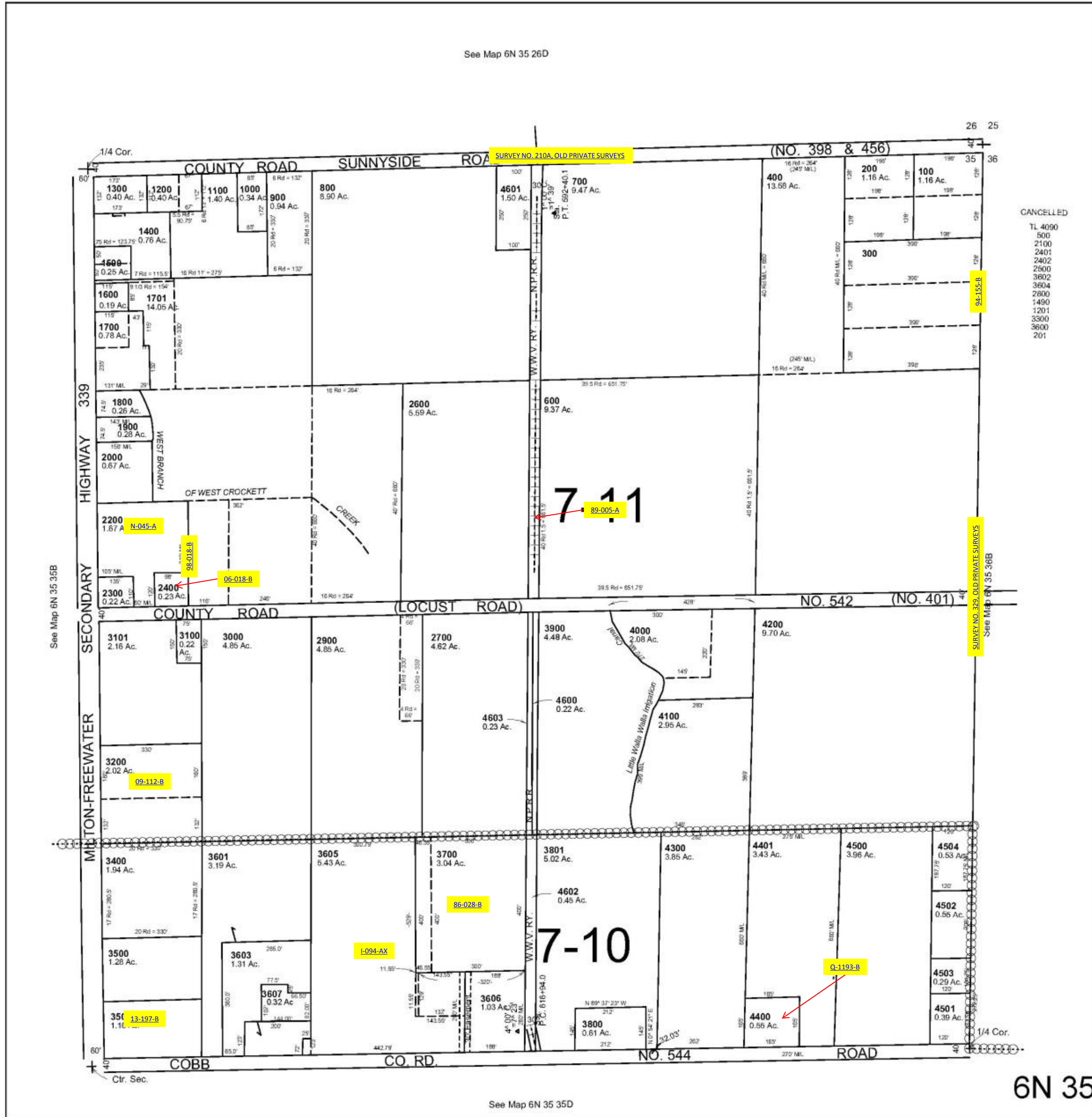
10/22/03

6N 35 35A

AERIAL PHOTO NO. NZ-6P-63

SCALE: 1" = 200'

See Map 6N 35 26D



6N 35 35A

See Map 6N 35 35D