

This map was prepared for Assessment & Taxation purposes only and was NOT prepared nor is it suitable for legal, engineering or surveying purposes.

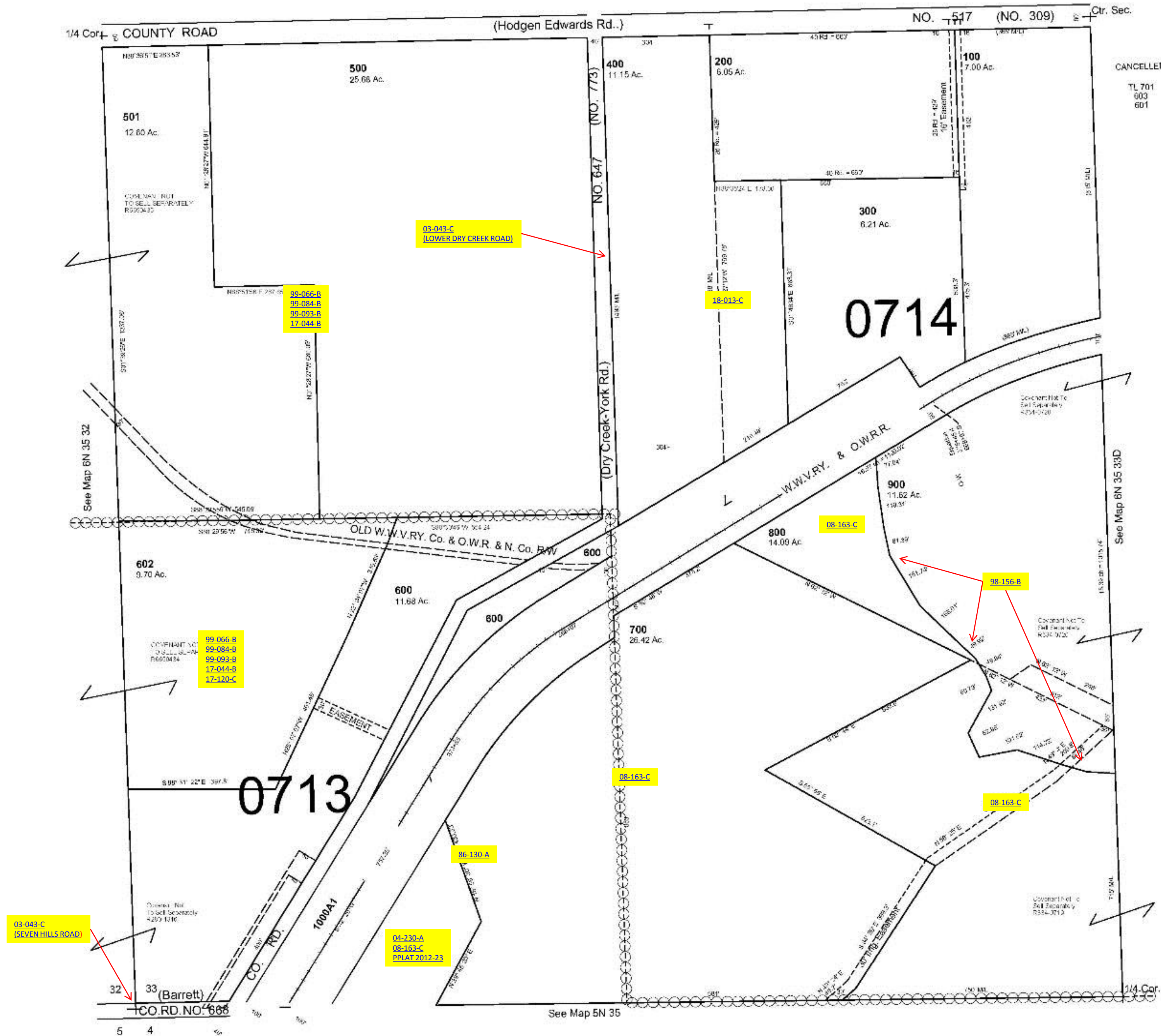
SW1/4 SEC 33 T6N R35E WM UMATILLA COUNTY

SCALE 1"=200'

6N 35 33C

AERIAL PHOTO NO. NZ 6P-61

See Map 6N 35 33B



Revised: 05-01-18

6N 35 33C