

ALSO SEE SURVEYS 89-005-A, 03-023-C, 12-033-C, 12-048-AX, 98-147-G; CORNER RECORDS; G.L.O. SURVEYS; SURVEY NO. 72, OLD PRIVATE SURVEYS

This map was prepared for Assessment & Taxation purposes only and was NOT prepared nor is it suitable for legal, engineering or surveying purposes.

# NW 1/4 SEC 26 T6N R35E WM UMATILLA COUNTY

## 6N 35 26B

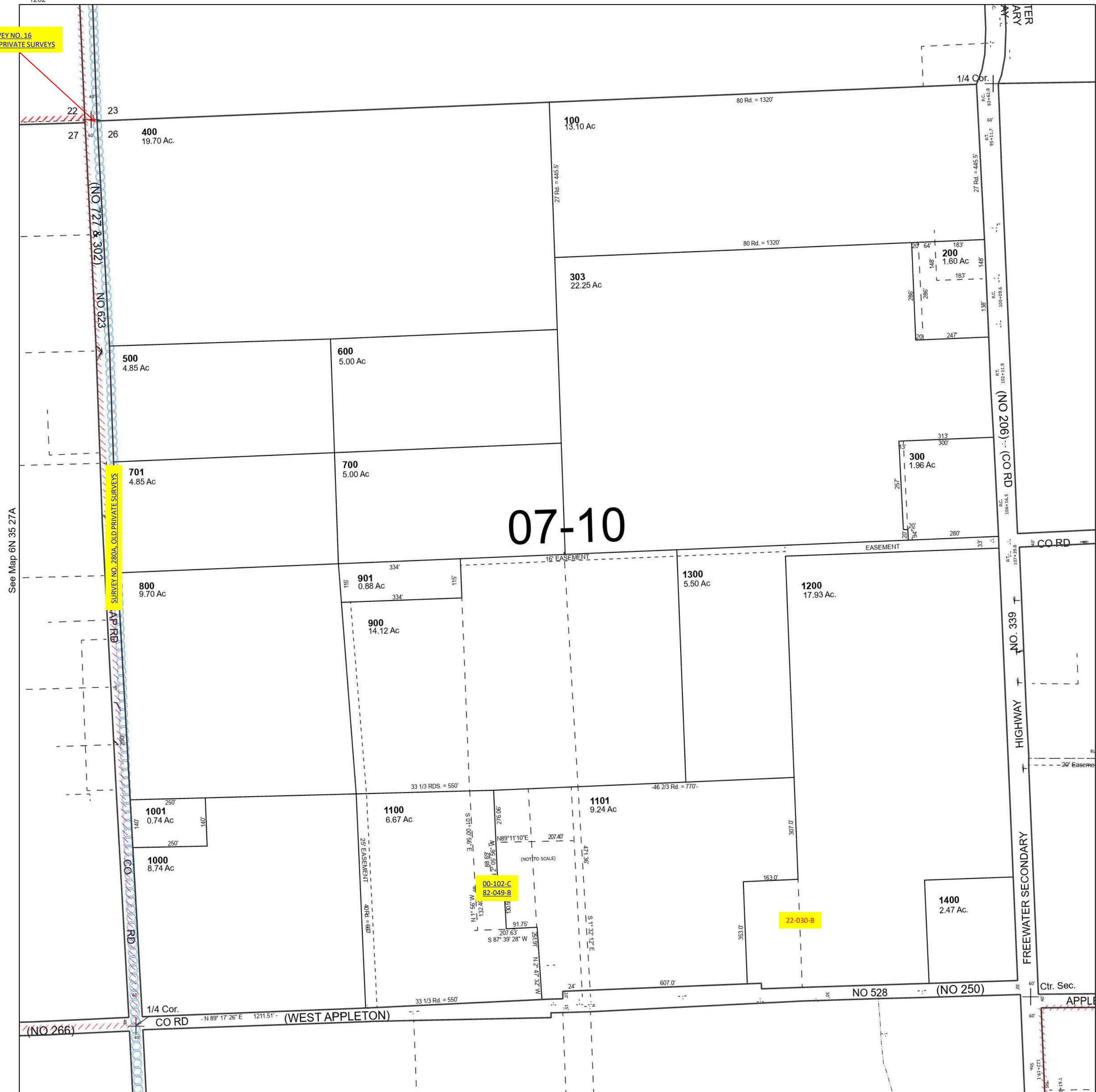
SCALE 1" = 200'

See Map 6N 35 23C

Cancelled Tax Lots

- 302
- 304
- 305
- 401
- 1102
- 1201
- 1202
- 301
- 1203
- 1202

SURVEY NO. 16  
OLD PRIVATE SURVEYS



Revised 5/24/2023

See Map 6N 35 26C

## 6N 35 26B