

ALSO SEE SURVEYS 03-023-C, 09-010-C, 12-033-C; CORNER RECORDS; G.L.O. SURVEYS

This map was prepared for Assessment & Taxation purposes only and was NOT prepared nor is it suitable for legal, engineering or surveying purposes.

NE 1/4 SEC 24 T6N R35E WM UMATILLA COUNTY

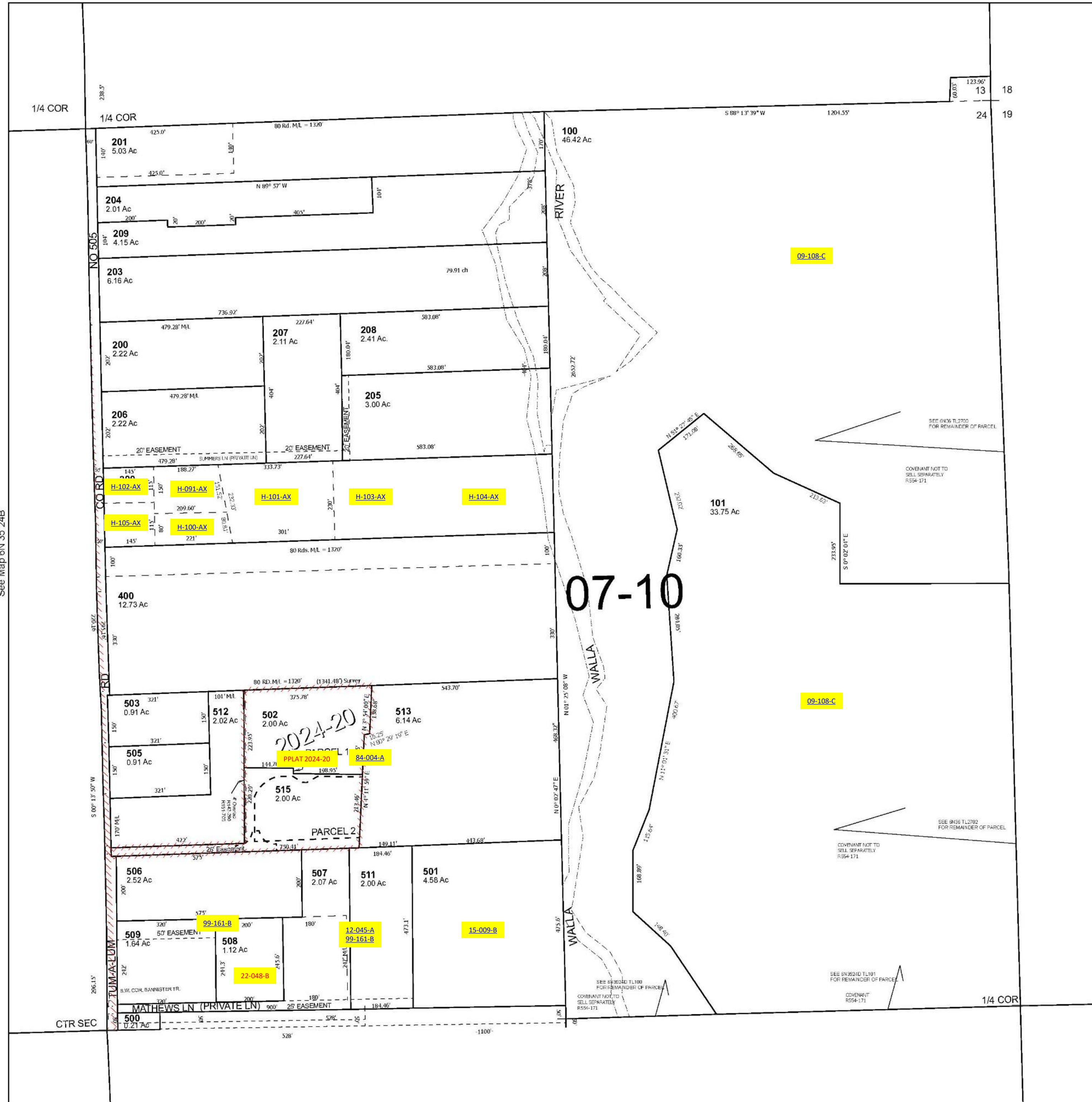
6N 35 24A

SCALE 1" = 200'

Cancelled Tax Lots

- 202
- 301
- 302
- 303
- 304
- 510
- 514

See Map 6N 35 13D



See Map 6N 35 24B

See Map 6N 36

Revised 12/27/2024

See Map 6N 35 24D

6N 35 24A