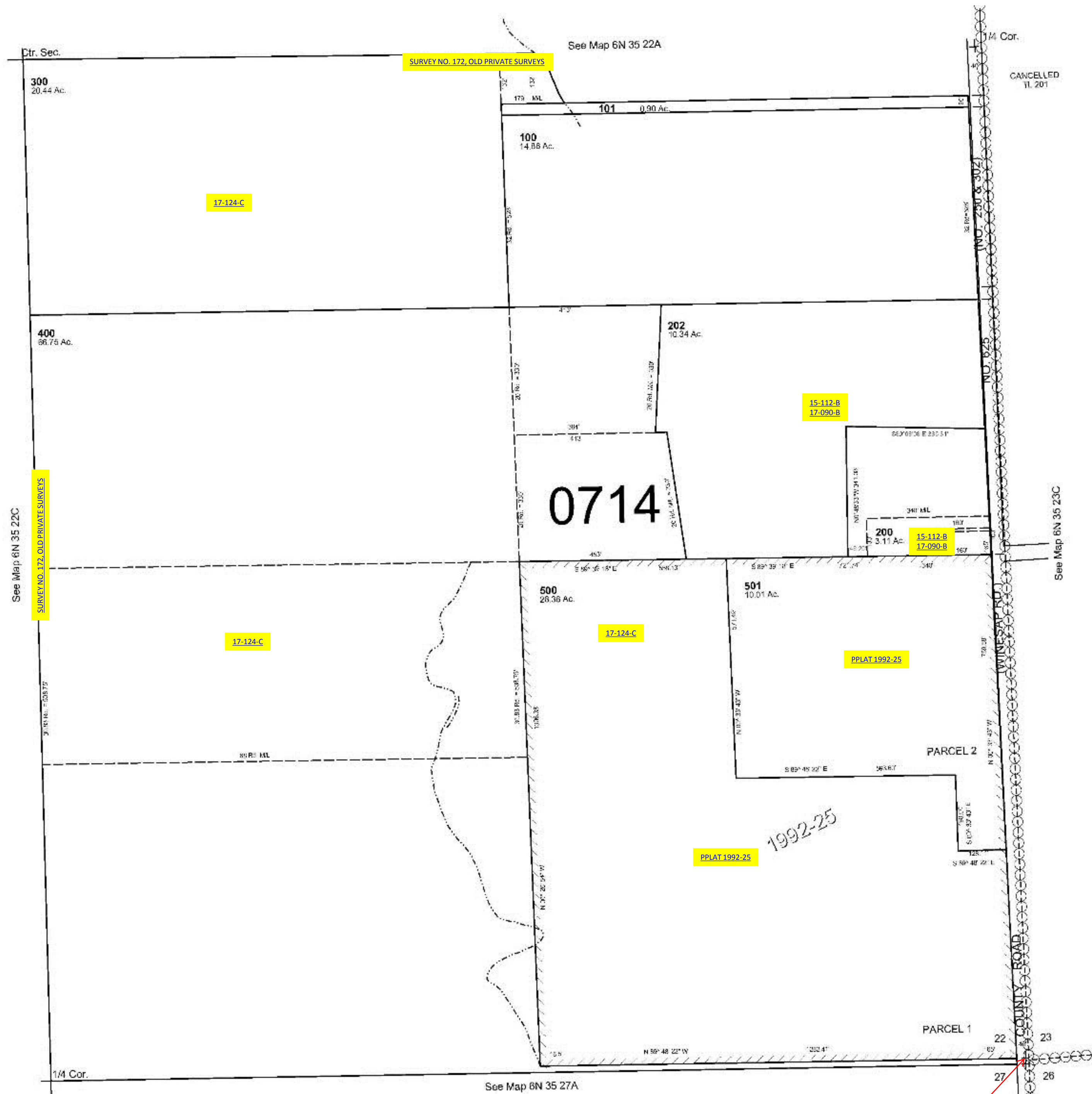


ALSO SEE SURVEYS 03-023-C, 12-033-C; CORNER RECORDS; G.L.O. SURVEYS

This map was prepared
for assessment purposes

SE 1/4 SEC 22 T6N R35E WM
UMATILLA COUNTY
SCALE 1"=200'

6N 35 22D
AERIAL PHOTO NO. 6P-19



Revised: 11-30-17
6N 35 22D
SURVEY NO. 16
OLD PRIVATE SURVEYS