

This map was prepared for Assessment & Taxation purposes only and was NOT prepared nor is it suitable for legal, engineering or surveying purposes.

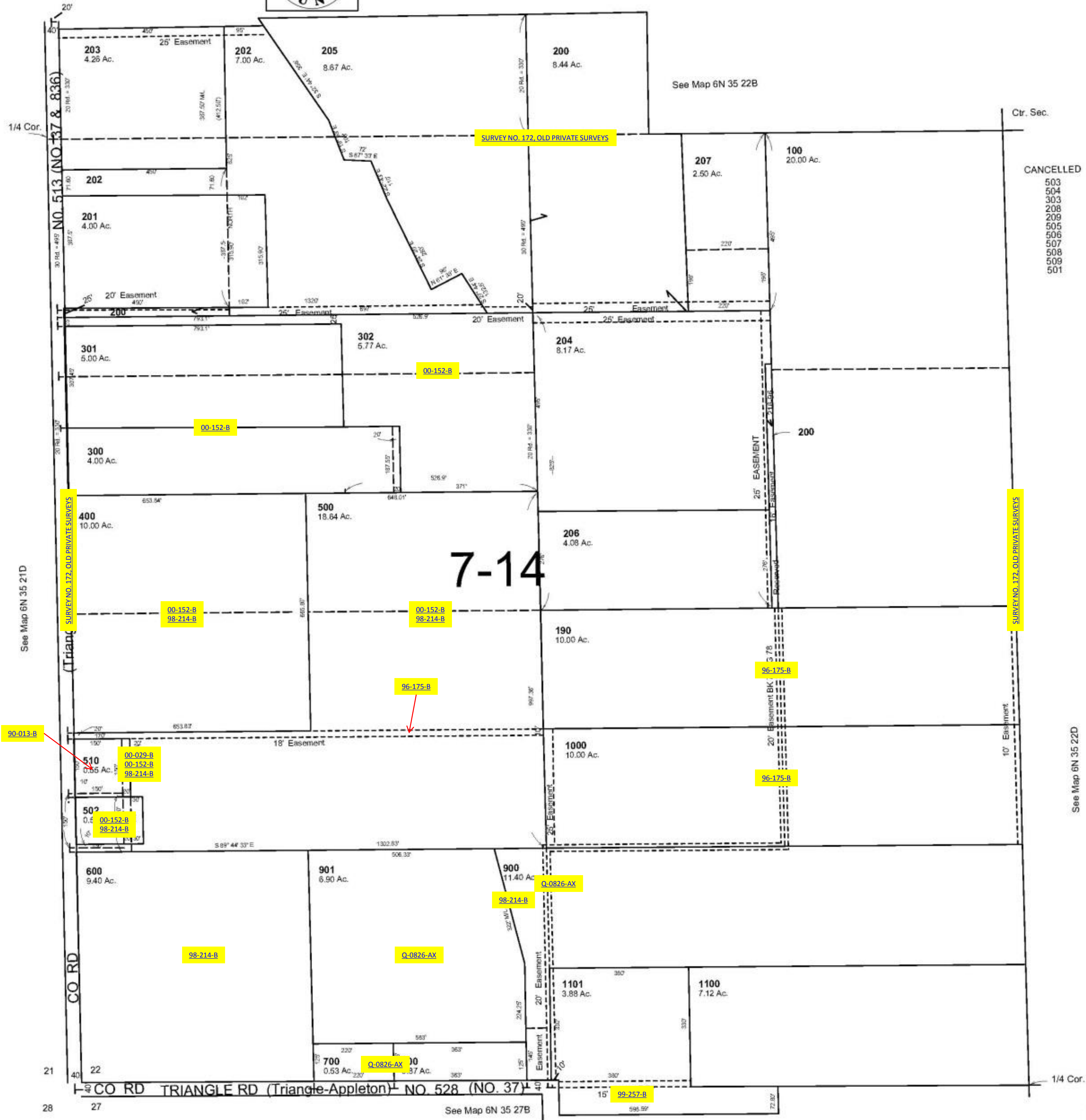


SW1/4 SEC 22 T6N R35E WM UMATILLA COUNTY, OR

SCALE: 1" = 200'

6N3522C

AERIAL PHOTO NO 6P-19



CANCELLED
503
504
505
506
507
508
509
501

Revised: 9/9/10

6N3522C