

ALSO SEE SURVEYS 03-023-C, 12-031-C, 12-033-C; CORNER RECORDS; G.L.O. SURVEYS

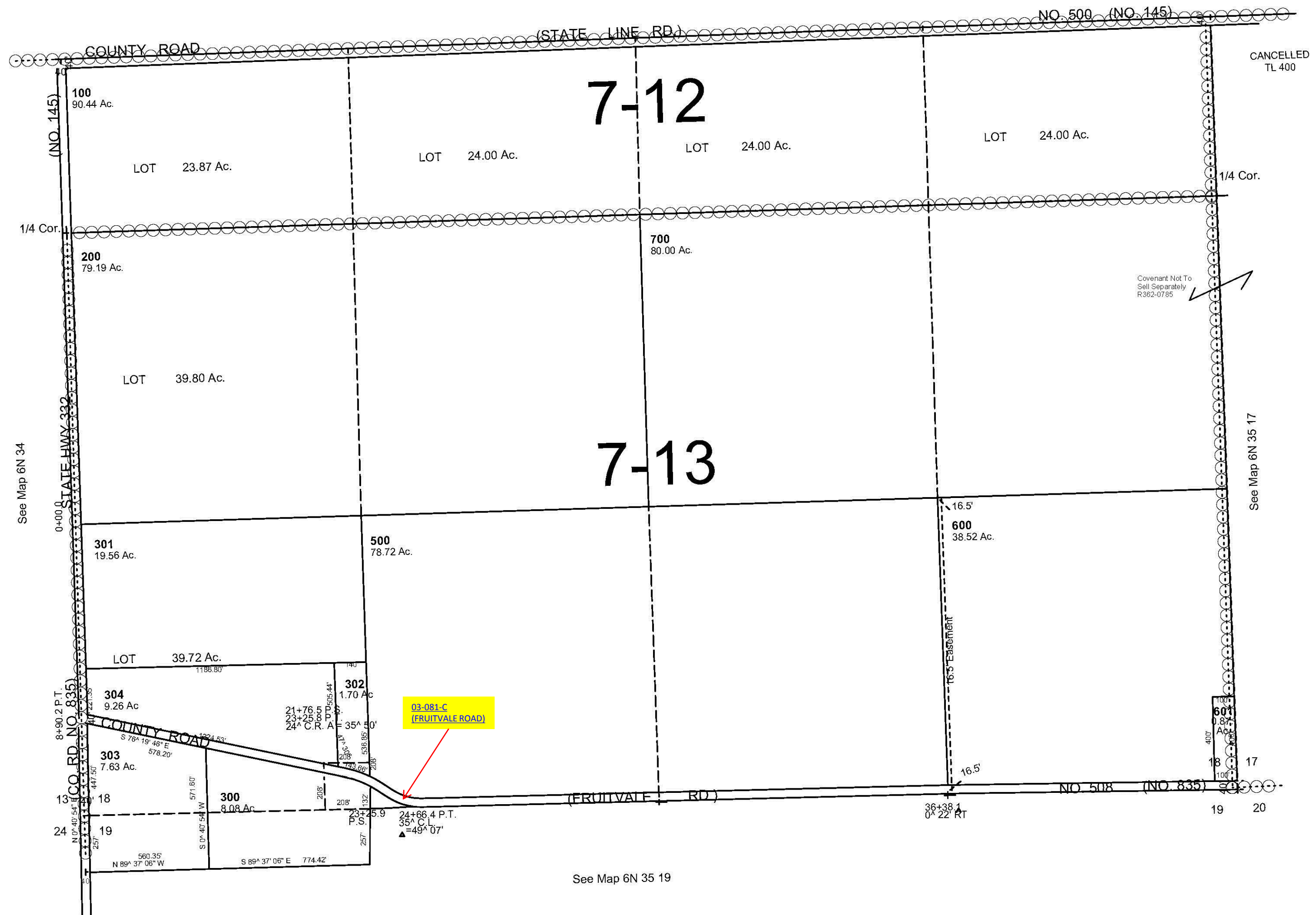
This map was prepared for Assessment & Taxation purposes only and was NOT prepared nor is it suitable for legal, engineering or surveying purposes.

SEC 18 T6N R35E WM UMATILLA COUNTY

6N 35 18

AERIAL PHOTO NO NZ 6P-21

1"=400'



See Map 6N 35 19

Revised: 4/25/11

6N 35 18