

This map was prepared for Assessment & Taxation purposes only and was NOT prepared nor is it suitable for legal, engineering or surveying purposes.

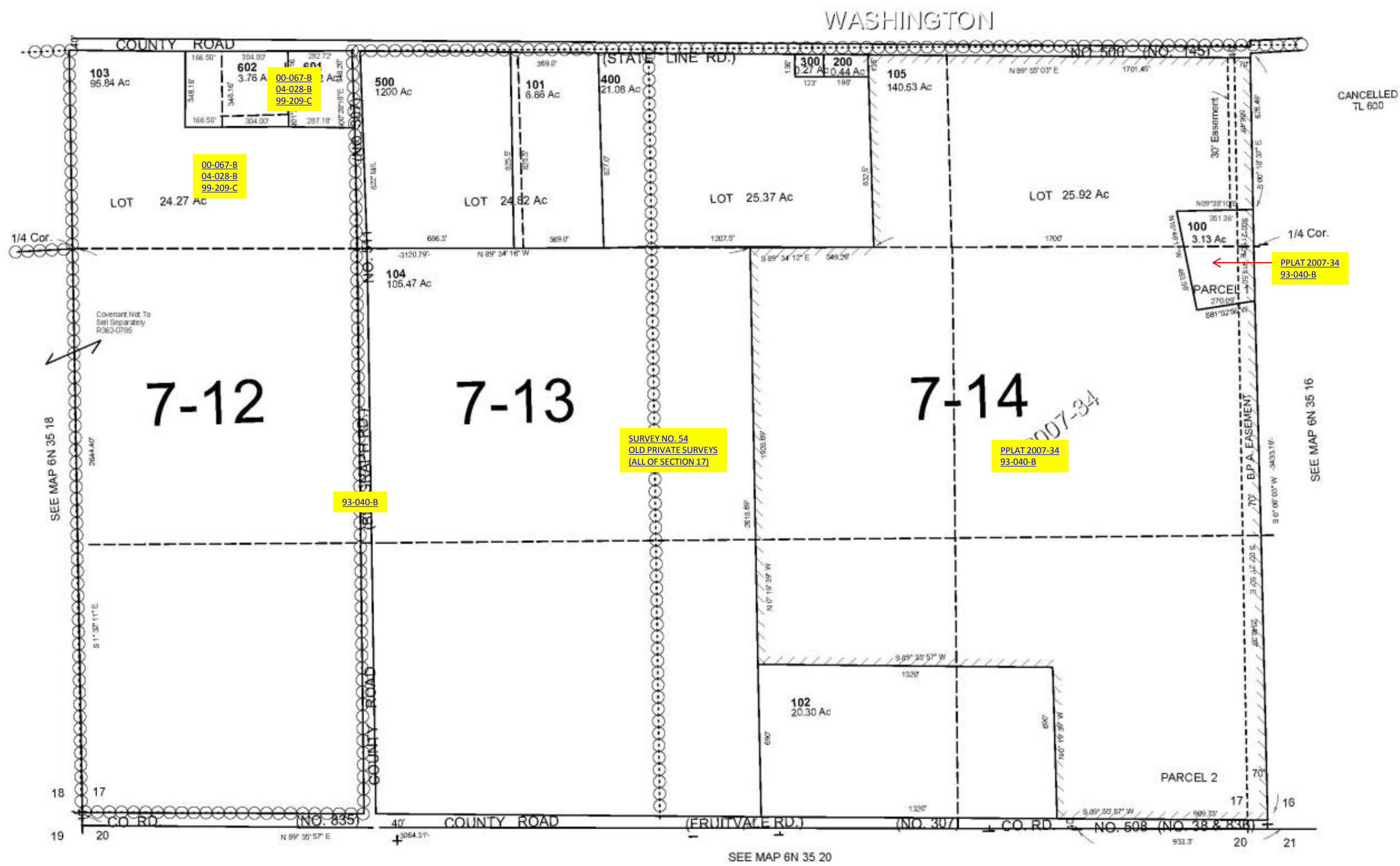


SEC 17 T 6N R 35E WM UMATILLA COUNTY, OR

SCALE: 1" = 400'

6N 35 17

AERIAL PHOTO NO 6P 20-21



Revised: 4/25/11

6N 35 17