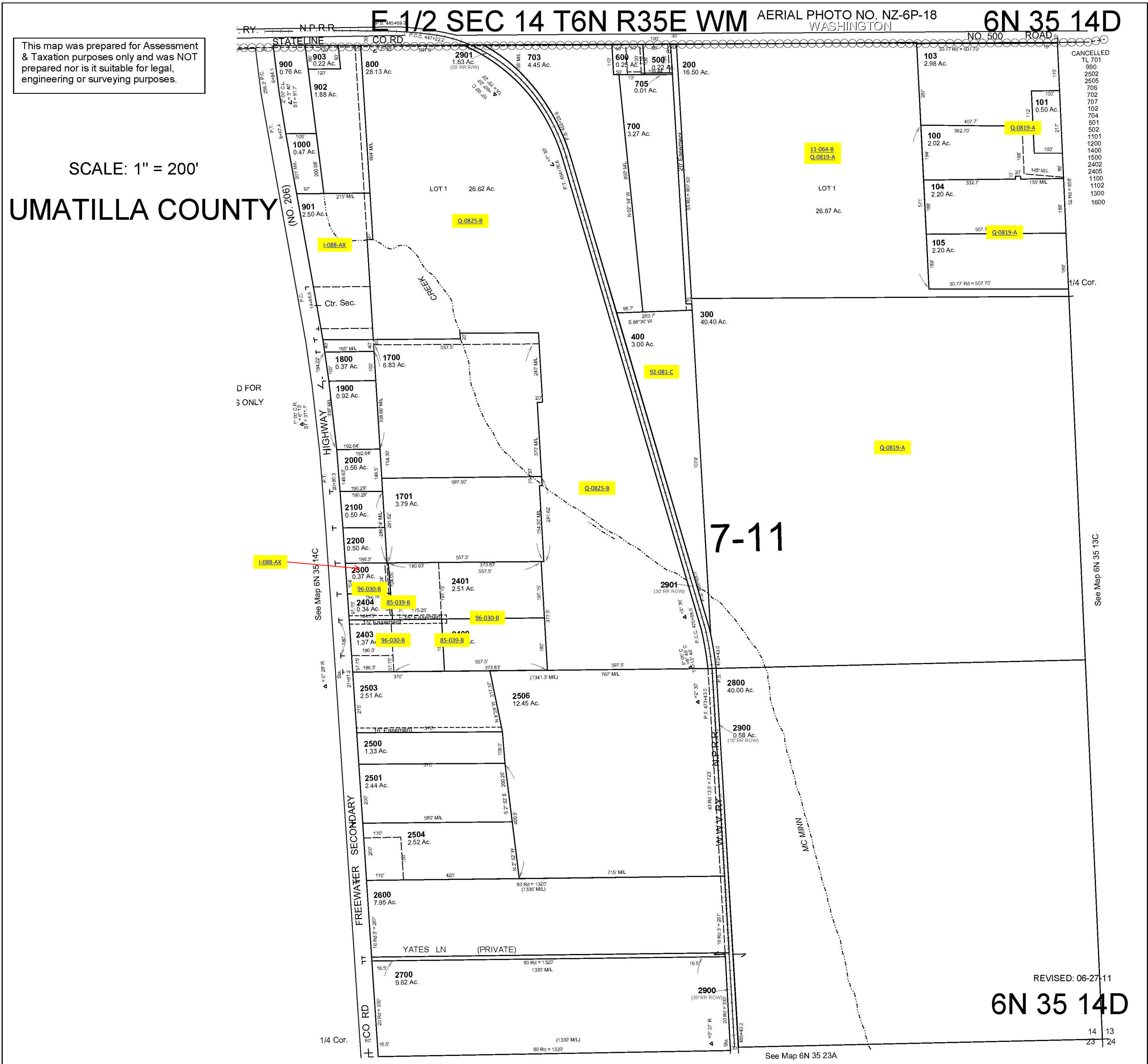


ALSO SEE SURVEYS 06-082-A, 12-032-A, 89-005-A, 13-023-C, 12-031-C, 12-033-C, 86-014-A; CORNER RECORDS; G.L.O. SURVEYS



This map was prepared for Assessment & Taxation purposes only and was NOT prepared nor is it suitable for legal, engineering or surveying purposes.

SCALE: 1" = 200'

UMATILLA COUNTY

E 1/2 SEC 14 T6N R35E WM AERIAL PHOTO NO. NZ-6P-18 WASHINGTON 6N 35 14D

- CANCELLED
- TL 701
- 900
- 2502
- 2505
- 706
- 702
- 707
- 102
- 704
- 501
- 502
- 1101
- 1200
- 1400
- 1500
- 2402
- 2405
- 1100
- 1102
- 1300
- 1600

D FOR S ONLY

See Map 6N 35 13C

REVISED: 06-27-11

6N 35 14D

14 13  
23 24

See Map 6N 35 23A