

This map was prepared for Assessment & Taxation purposes only and was NOT prepared nor is it suitable for legal, engineering or surveying purposes.



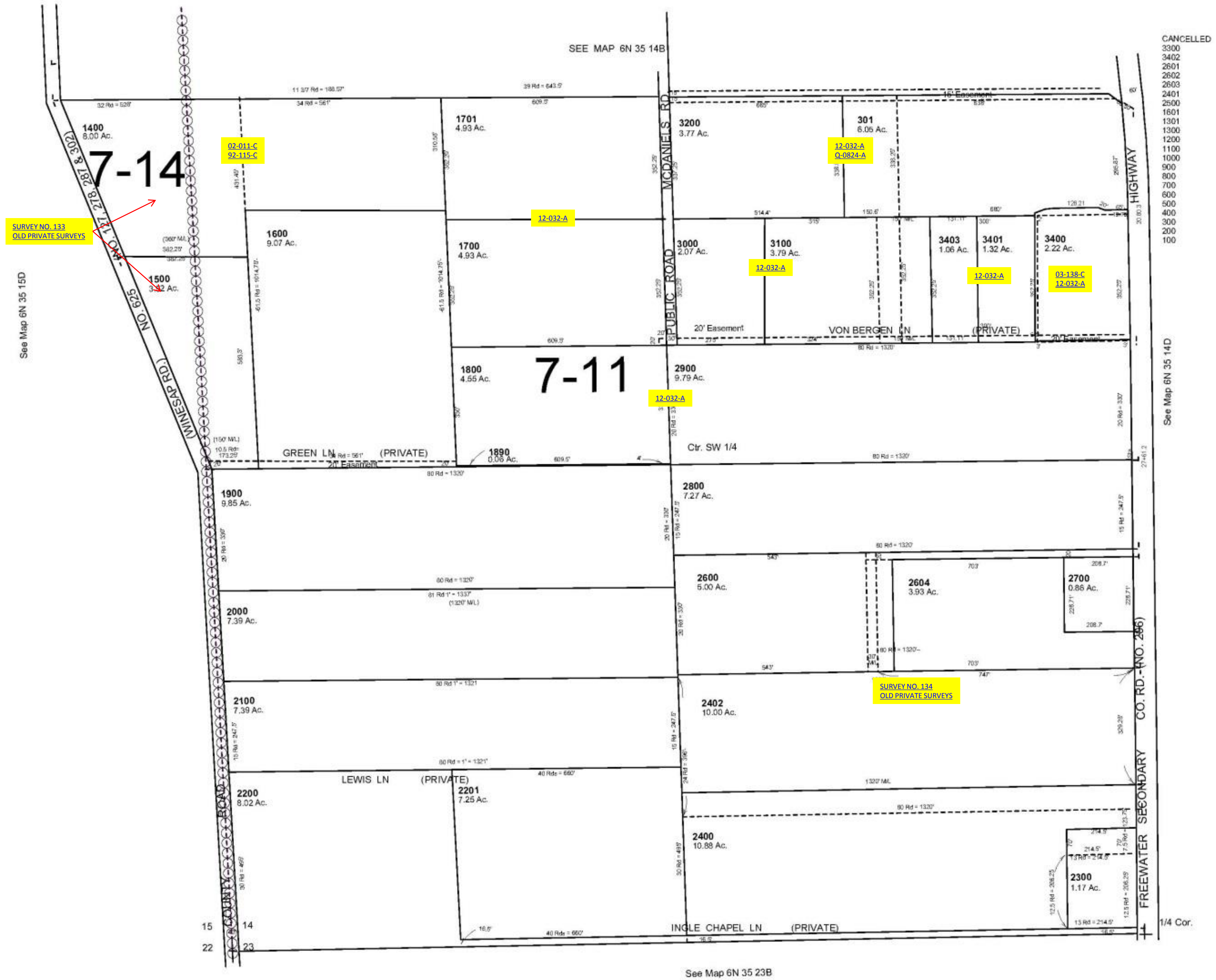
SW1/4 SEC 14 T6N R35E WM  
UMATILLA COUNTY, OR

REVISED: 4/28/08

6N 35 14C

AERIAL PHOTO NO. NZ-6P-19

SCALE: 1" = 200



CANCELLED  
3300  
3402  
2601  
2602  
2603  
2401  
2500  
1601  
1301  
1300  
1200  
1100  
1000  
900  
800  
700  
600  
500  
400  
300  
200  
100

See Map 6N 35 14D

See Map 6N 35 23B

6N 35 14C