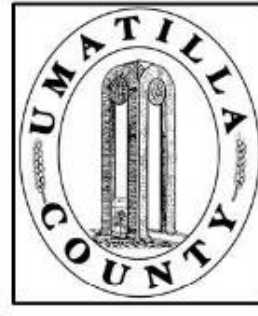


This map was prepared for Assessment & Taxation purposes only and was NOT prepared nor is it suitable for legal, engineering or surveying purposes.

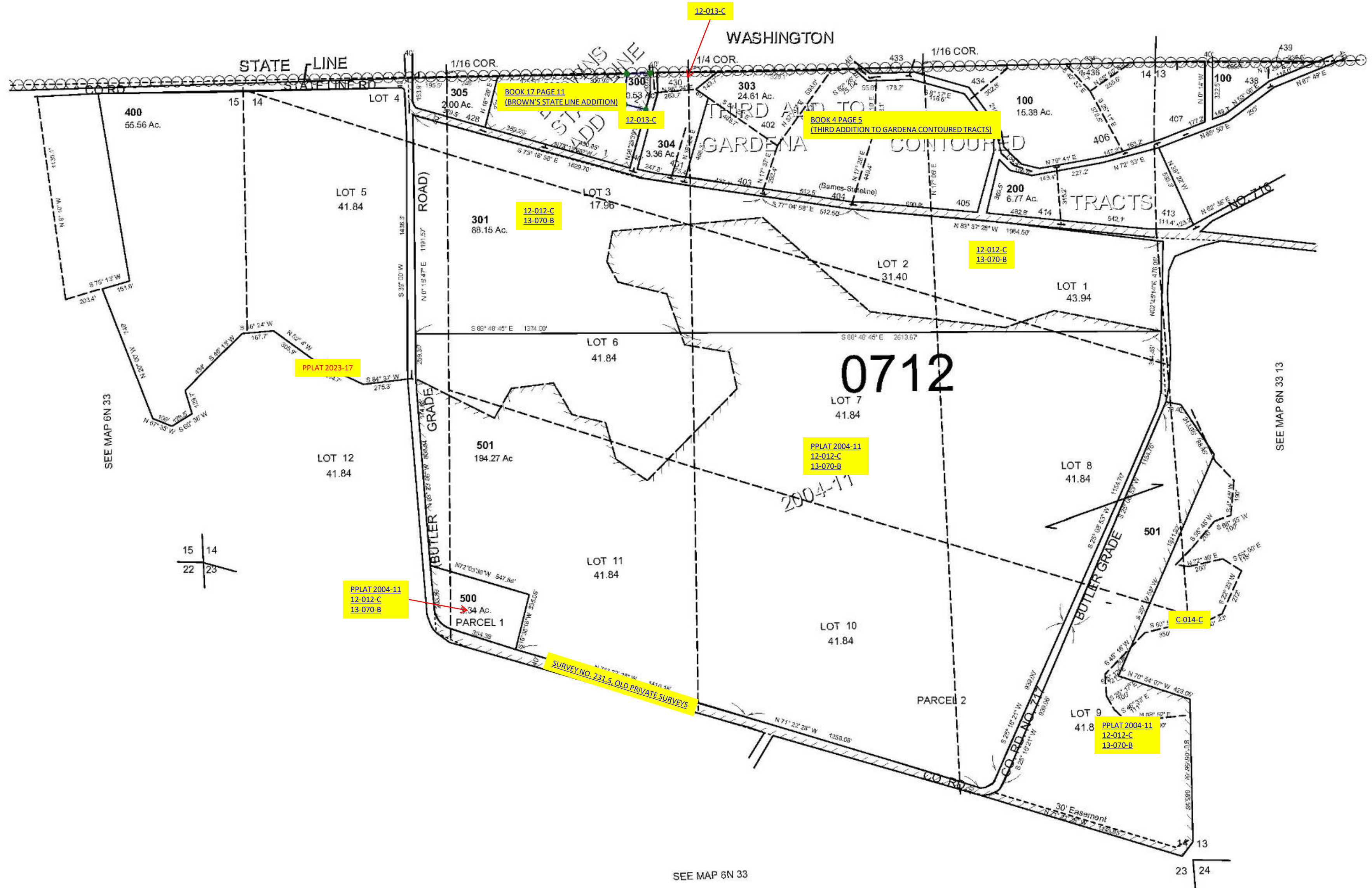


SEC 14 T 6N R 33E WM UMATILLA COUNTY

6N 33 14

SCALE: 1" = 400'

AERIAL PHOTO NO. 6P-28



Revised: 01-12-2021

6N 33 14