

This map was prepared for assessment purposes

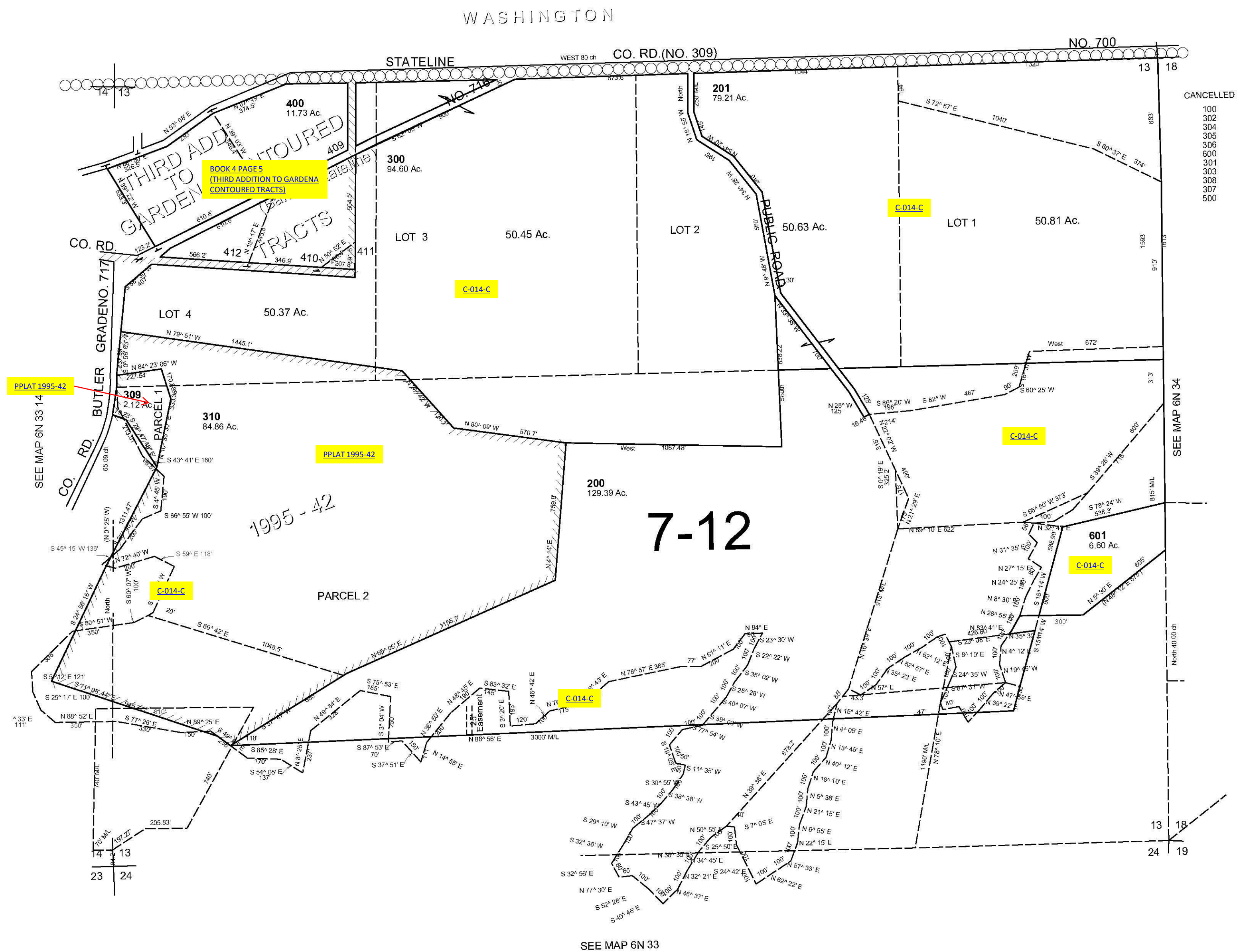
SEC 13 T6N R33E WM UMATILLA COUNTY

5/4/06

6N 33 13

AERIAL PHOTO NO. NZ 6P-28

SCALE 1"=400'



- CANCELLED
- 100
 - 302
 - 304
 - 305
 - 306
 - 600
 - 301
 - 303
 - 308
 - 307
 - 500

6N 33 13