

ALSO SEE SURVEYS 06-571-AX, 13-179-B, 82-032-A, 93-115-C, R-0187-B; CORNER RECORDS; G.L.O. SURVEYS

This map was prepared for Assessment & Taxation purposes only and was NOT prepared nor is it suitable for legal, engineering or surveying purposes.

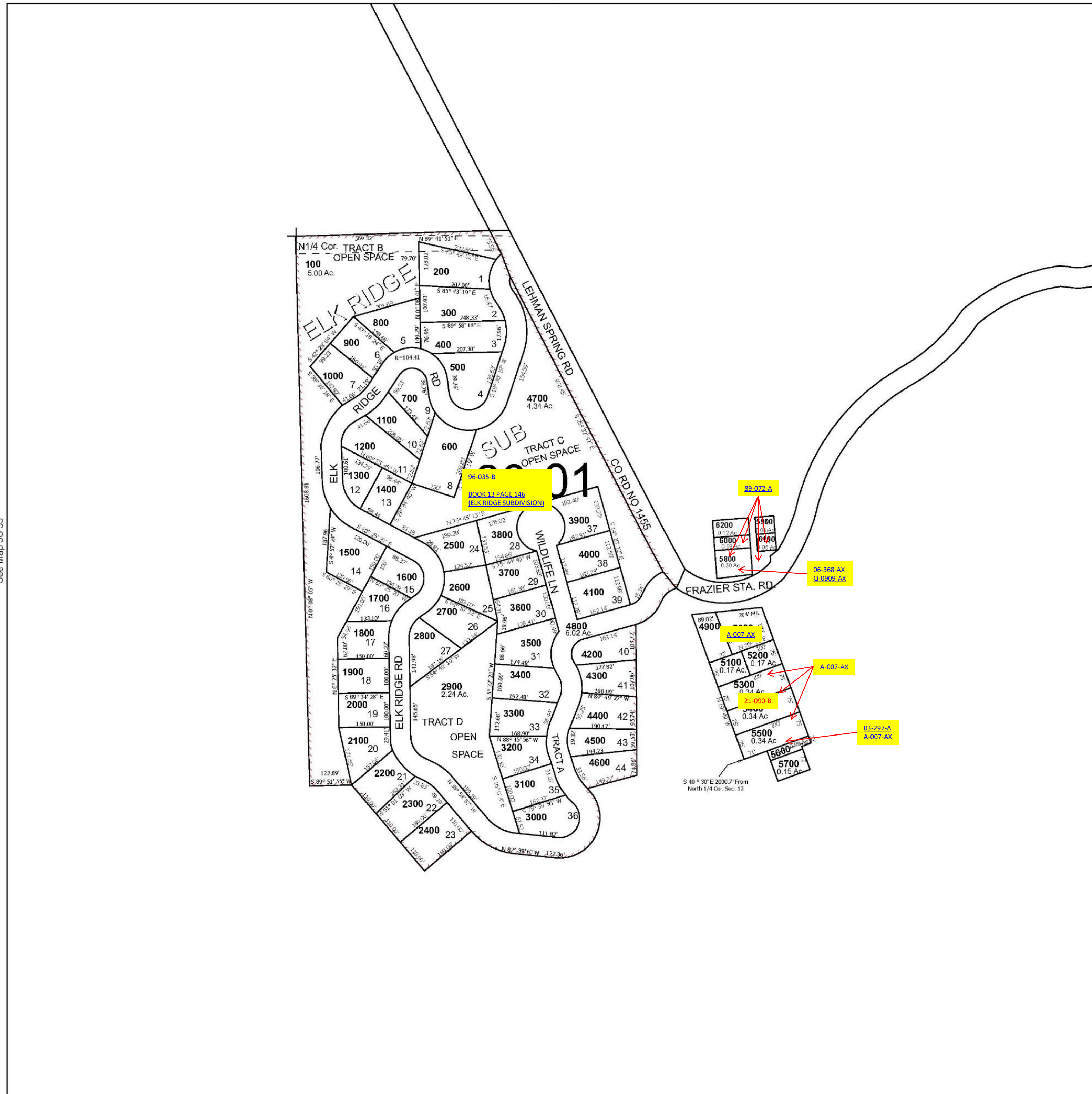
Cancelled Tax Lots

NE 1/4 SEC 12 T5S R33E WM UMATILLA COUNTY

SCALE 1" = 200'

5S 33 12A

See Map 5S 33



Revised 1/15/2025

See Map 5S 33

5S 33 12A