

ALSO SEE SURVEYS 06-571-AX, 13-179-B, 82-032-A, H-050-B, 03-019-B, 14-006-B, 84-101-B, 85-118-B, Q-1134-B, Q-1223-B; CORNER RECORDS; G.L.O. SURVEYS

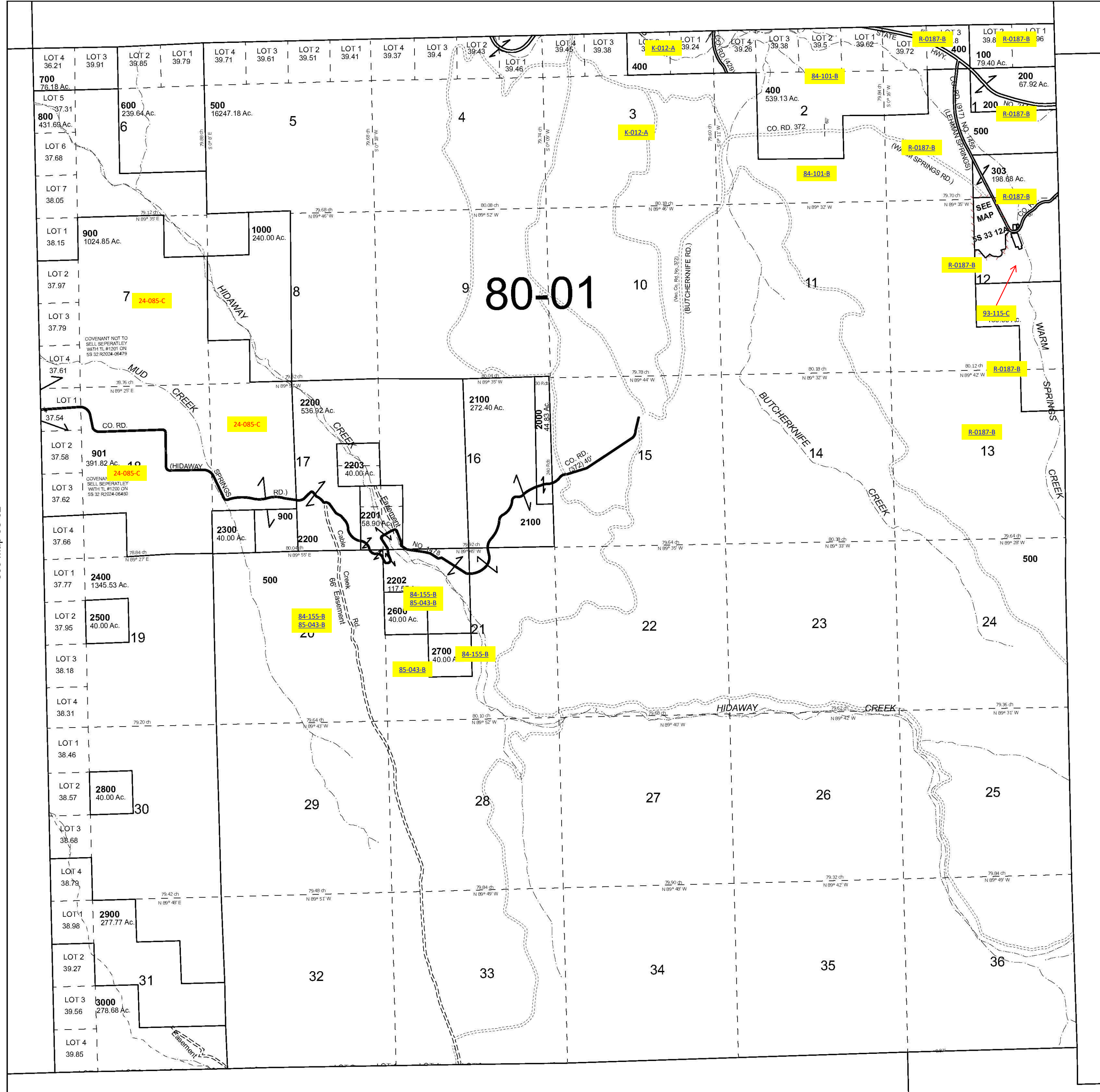
This map was prepared for Assessment & Taxation purposes only and was NOT prepared nor is it suitable for legal, engineering or surveying purposes.

# T5S R33E WM UMATILLA COUNTY SCALE 1" = 2,000'

5S 33

Cancelled Tax Lots	
301	1500
302	1600
1100	1700
1101	1800
1102	1900
1103	1901
1200	
1300	
1301	
1400	

See Map 4S 33



See Map 5S 32

See Map 5S 33 H

Revised 12/30/2024

See Map 6S 33

5S 33