

ALSO SEE SURVEY 12-155-C; CORNER RECORDS; G.L.O. SURVEYS

This map was prepared for Assessment & Taxation purposes only and was NOT prepared nor is it suitable for legal, engineering or surveying purposes.

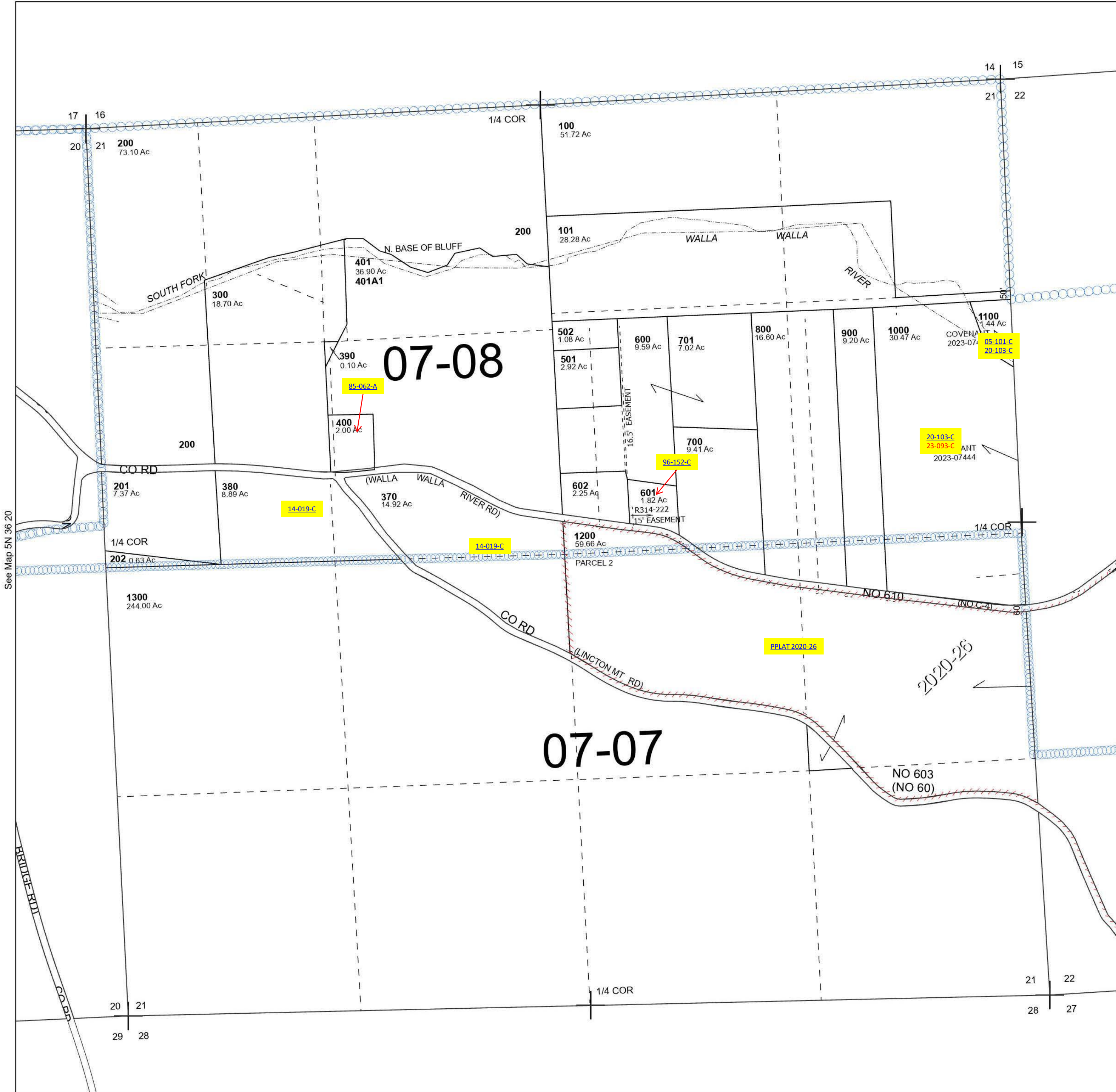
Cancelled Tax Lots
102
500

SEC 21 T5N R36E WM UMATILLA COUNTY

5N 36 21

SCALE 1" = 400'

See Map 5N 36



Revised 3/6/2024

See Map 5N 36

5N 36 21