

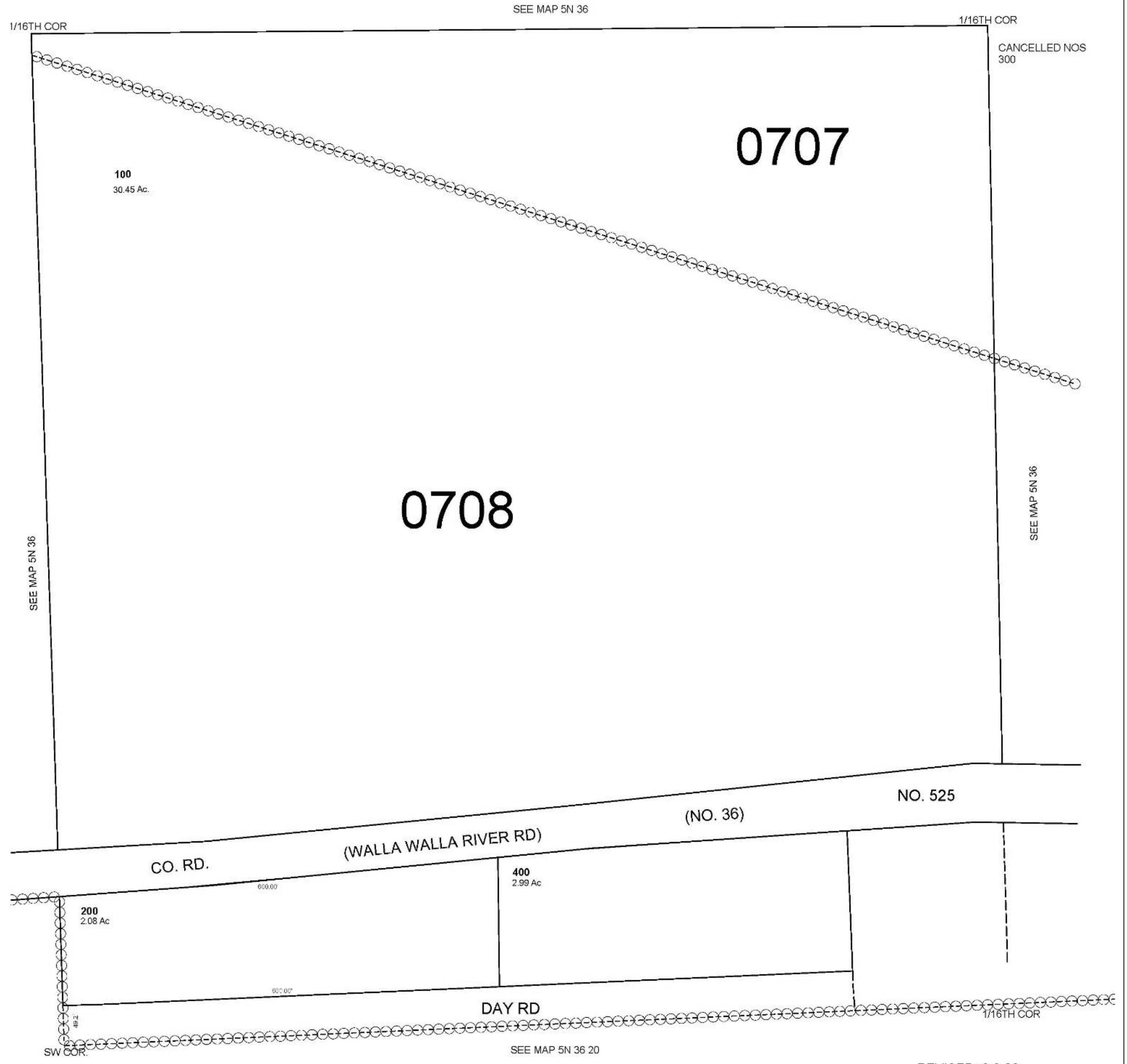
This map was prepared for Assessment & Taxation purposes only and was NOT prepared nor is it suitable for legal, engineering or surveying purposes.

# SW1/4 SW1/4 T5N R36E WM UMATILLA COUNTY

1"=100'

## 5N 36 17CC

AERIAL PHOTO NO. 5P 12-16, 6P 120-123, 11P 51-53



REVISED: 6-6-08

## 5N 36 17CC