

This map was prepared for Assessment & Taxation purposes only and was NOT prepared nor is it suitable for legal, engineering or surveying purposes.

Cancelled Tax Lots.

NW 1/4 SE 1/4 SEC 13 T5N R35E WM

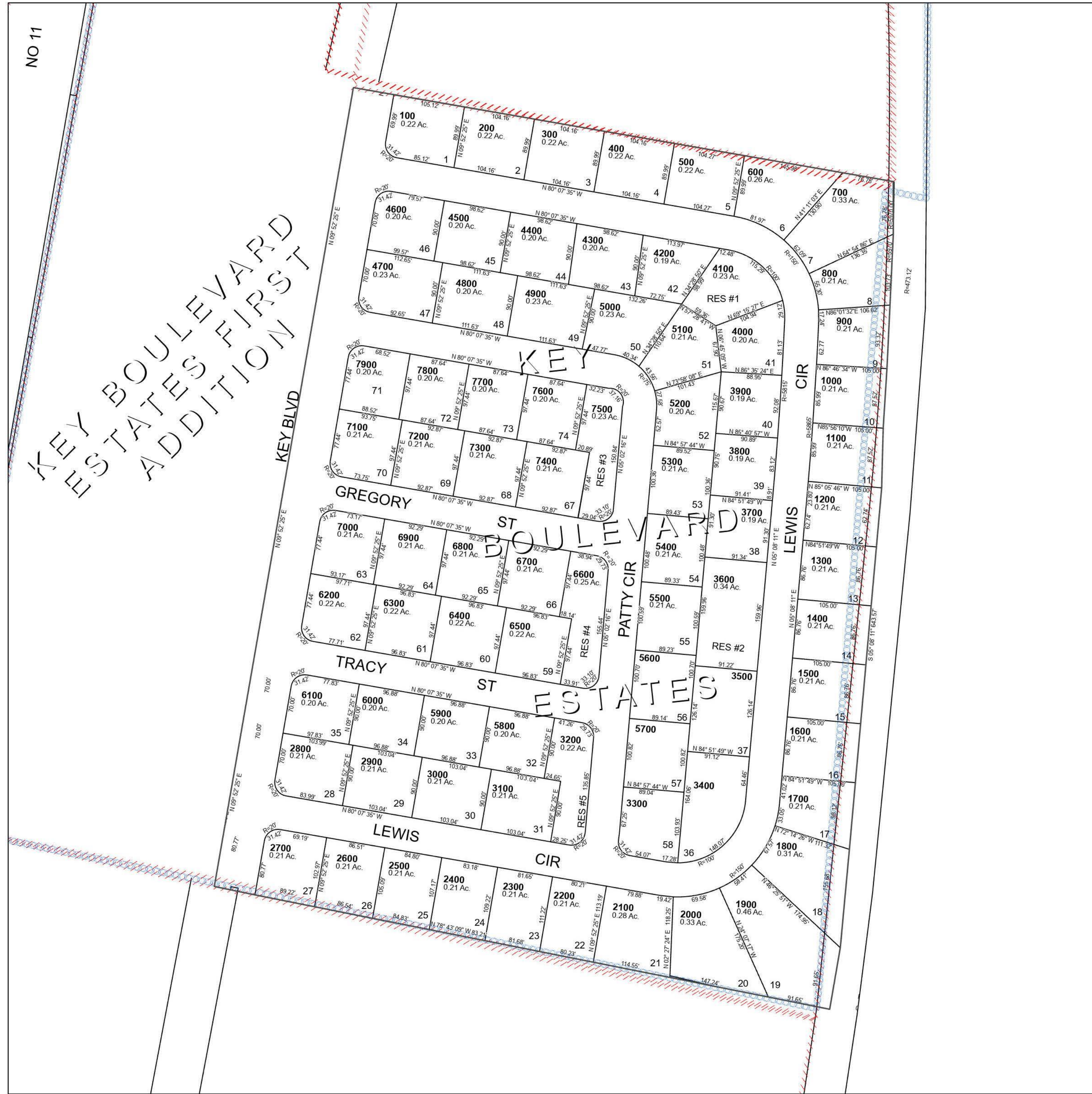
UMATILLA COUNTY

SCALE 1" = 100'

Milton-Freewater

5N 35 13DB

See Map 5N 35 13AC



See Map 5N 35 13

Revised 5/15/2023

See Map 5N 35

5N 35 13DB