

This map was prepared for Assessment & Taxation purposes only and was NOT prepared nor is it suitable for legal, engineering or surveying purposes.

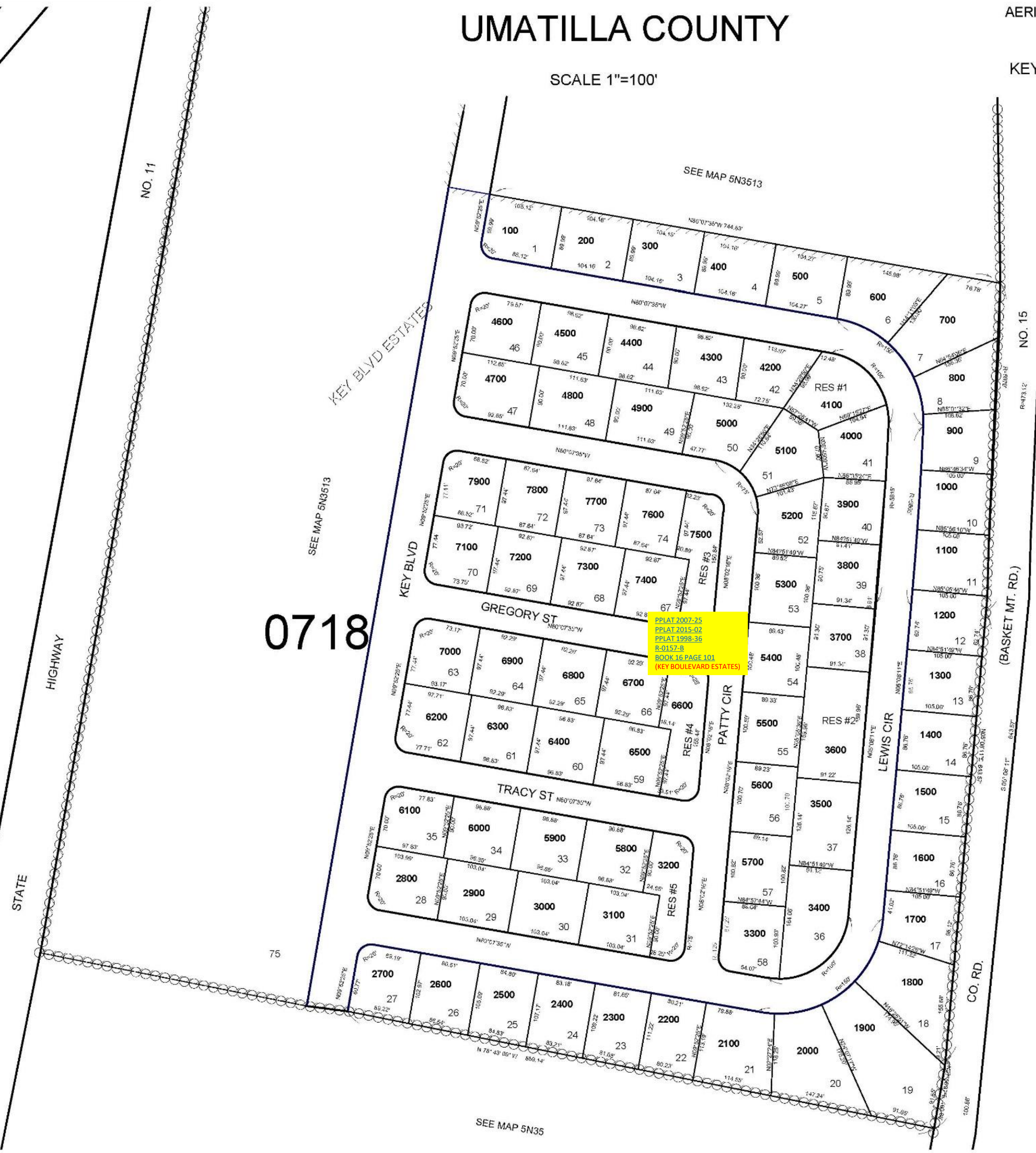
SW 1/4 NE 1/4 Sec 13 T5N R35E WM UMATILLA COUNTY

5N3513AD

AERIAL PHOTO NO 11P-82
6P-119

SCALE 1"=100'

KEY BOULEVARD ESTATES



0718

REVISED 04-22-2020

5N3513AD