

ALSO SEE SURVEYS Q-0801-A, Q-0881-A, 05-112-C, 12-155-C, 98-147-G, Q-0802-B, R-0118-B, S-157-C; CORNER RECORDS; G.L.O. SURVEYS

This map was prepared for Assessment & Taxation purposes only and was NOT prepared nor is it suitable for legal, engineering or surveying purposes.

Cancelled Tax Lots

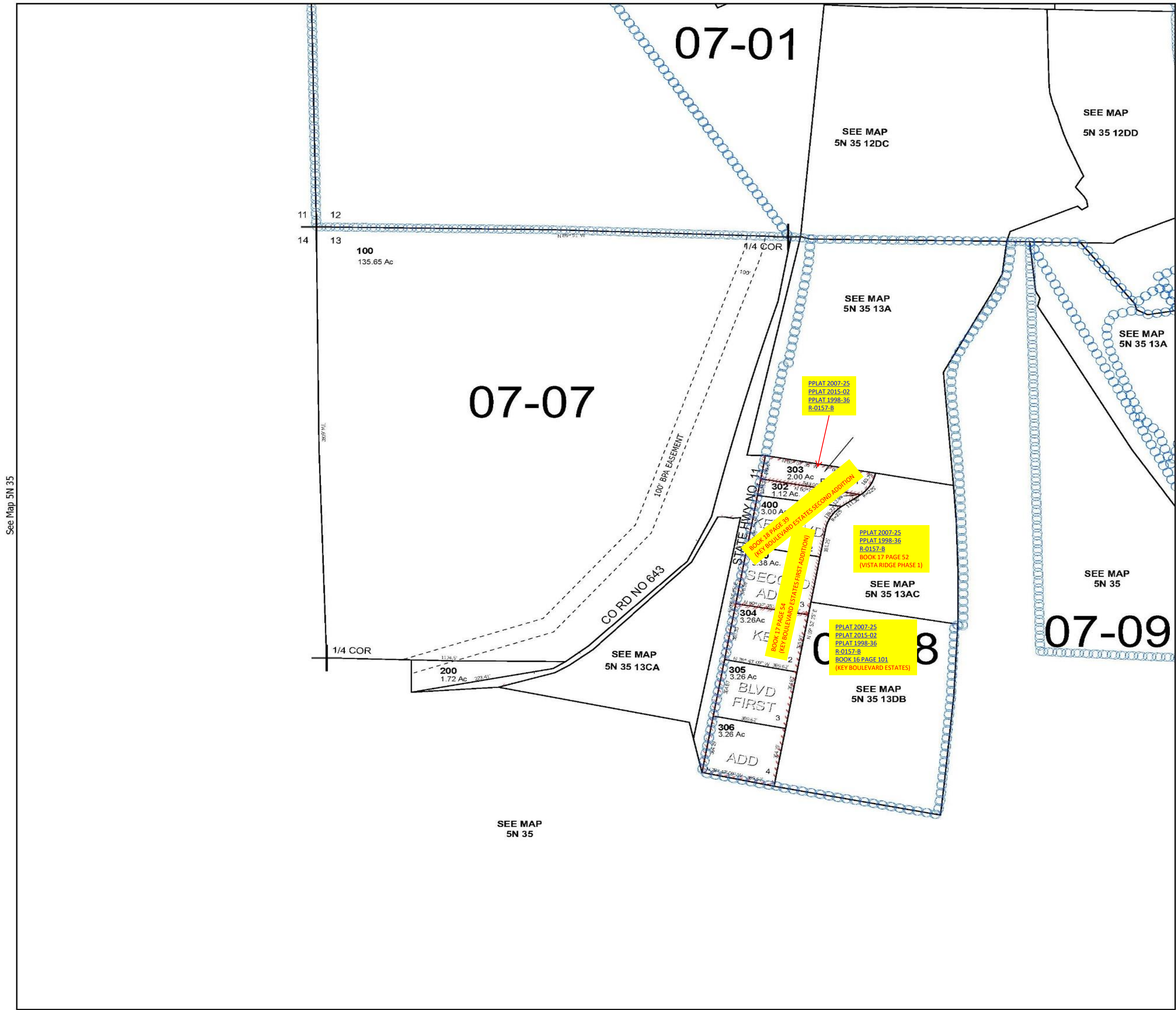
SEC 13 T5N R35E WM UMATILLA COUNTY

SCALE 1" = 400'

5N 35 13

Milton-Freewater

See Map 5N 35 12



See Map 5N 35

See Map 5N 35 13AC

Revised 12/18/2024

See Map 5N 35

5N 35 13