

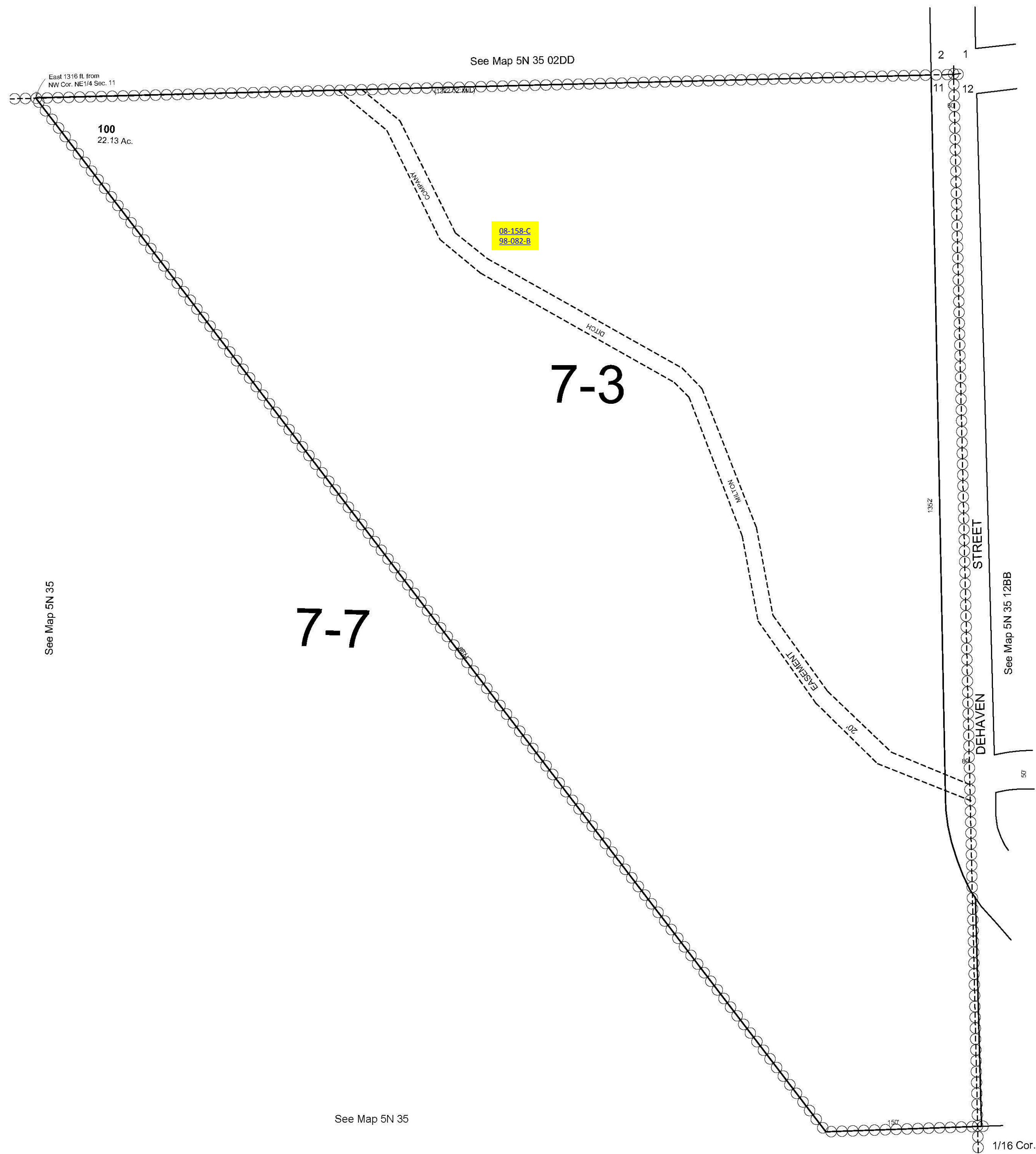
ALSO SEE SURVEY NO. 36, OLD PRIVATE SURVEYS

This map was prepared
for assessment purposes

NE1/4 NE1/4 SEC 11 T5N R35E WM
UMATILLA COUNTY
SCALE 1"=100'

10/04/06

5N 35 11AA
AERIAL PHOTO NO. 11P-83



5N 35 11AA