

ALSO SEE SURVEYS 03-023-C, 12-033-C, 98-147-G, S-157-C; CORNER RECORDS; G.L.O. SURVEYS

This map was prepared for Assessment & Taxation purposes only and was NOT prepared nor is it suitable for legal, engineering or surveying purposes.

# SEC 03 T5N R35E WM UMATILLA COUNTY

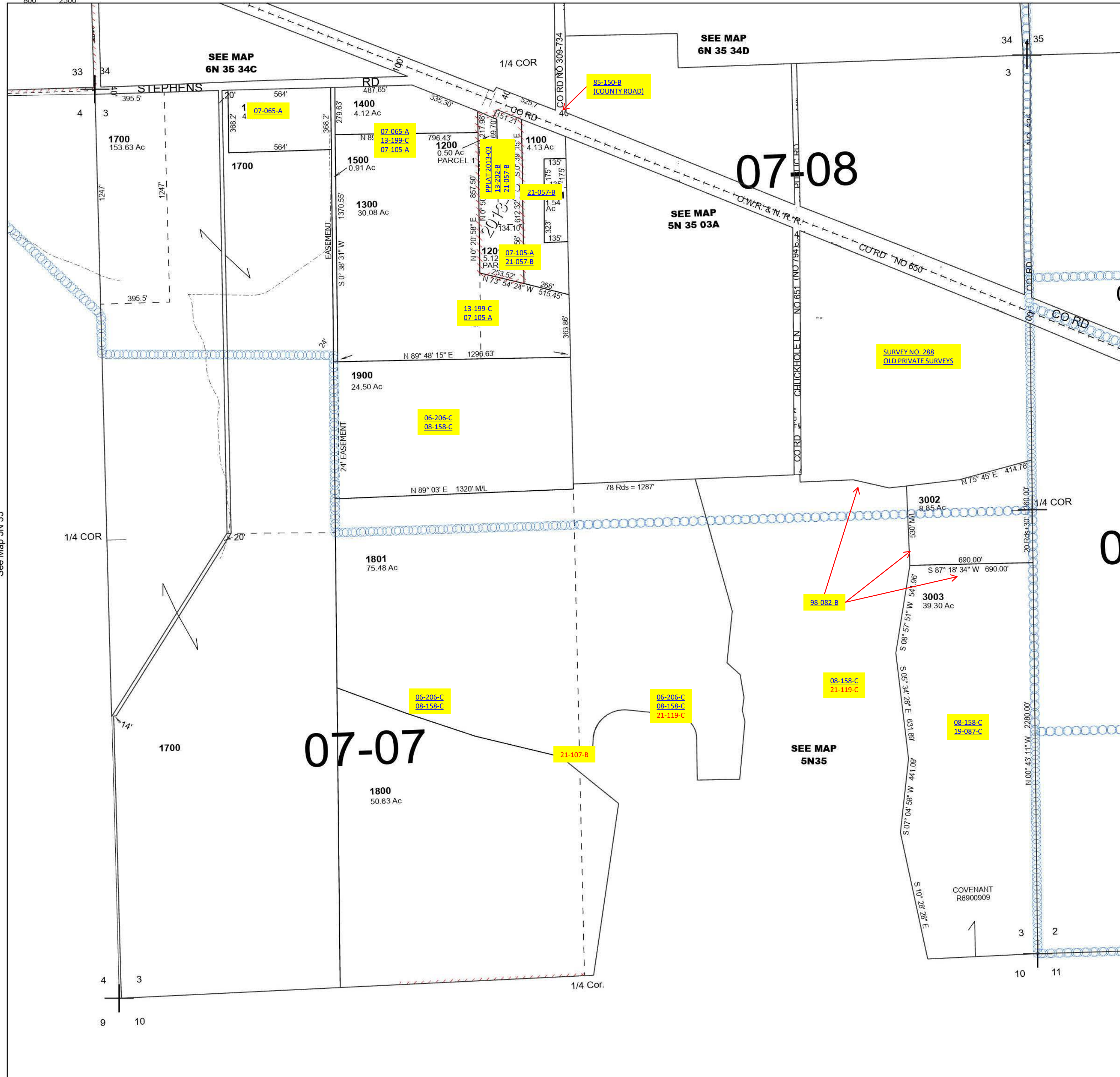
5N 35 03

SCALE 1" = 400'

See Map 6N 35

Cancelled Tax Lots

100	900	2600
200-203	901	2700
300-302	1000	2800
390	1102	2900
400	2000	3000
401	2100	3001
500	2200	3100
600	2300	
700	2400	
800	2500	



See Map 5N 35

See Map 5N 35 02

Revised 2/6/2024

See Map 5N 35

5N 35 03