

ALSO SEE SURVEYS 03-023-C, 05-112-C, 12-033-C; CORNER RECORDS; G.L.O. SURVEYS; SURVEY 27A, OLD PRIVATE SURVEYS

This map was prepared for Assessment & Taxation purposes only and was NOT prepared nor is it suitable for legal, engineering or surveying purposes.

NW1/4 T5N R35E WM UMATILLA COUNTY

SCALE 1"=1000'

5N35B

AERIAL PHOTO NO 11P 81-88
6P 114-120
5P 17-22

03-022-B
03-043-C
(SEVEN HILLS ROAD)

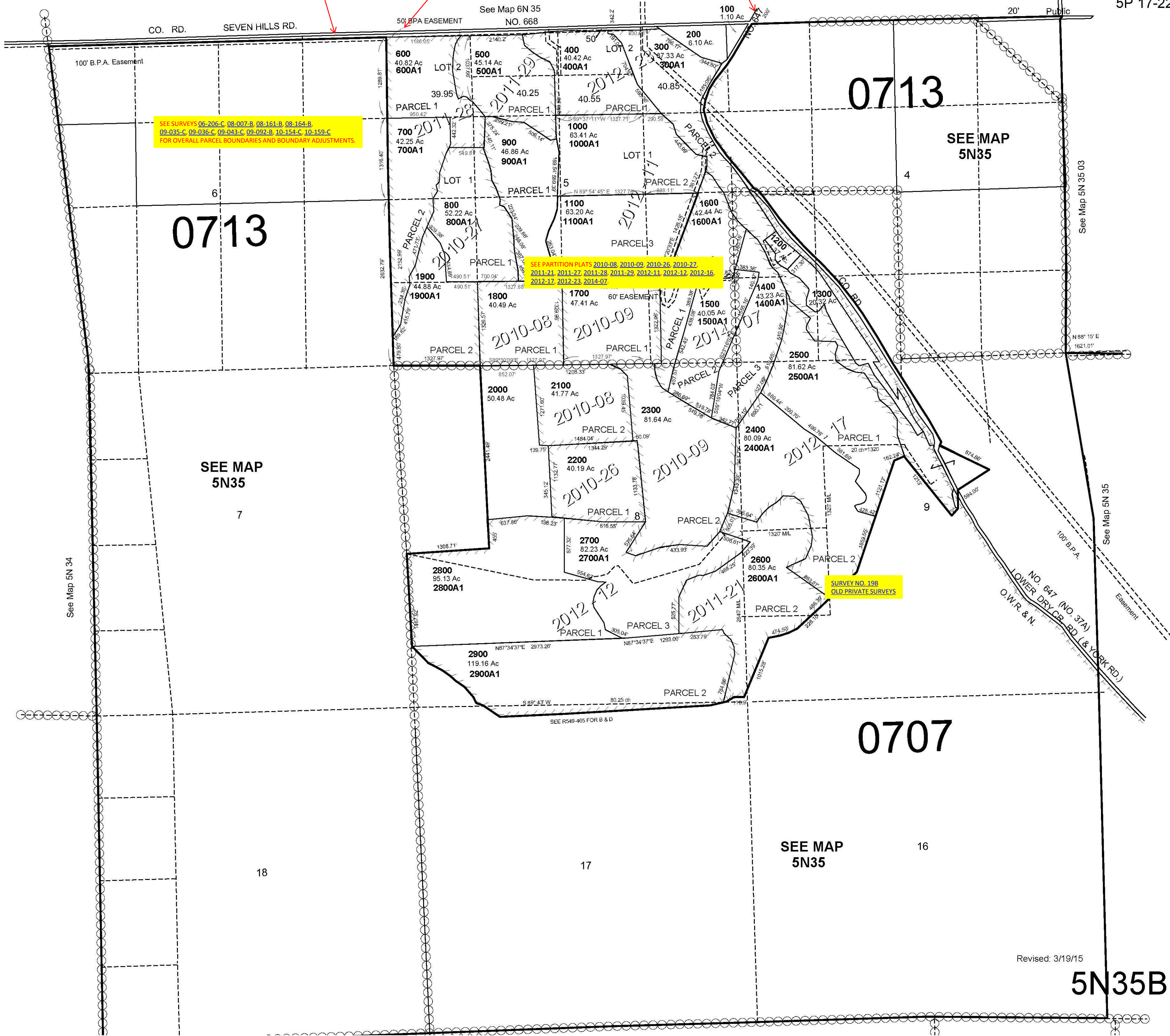
09-102-B
(B.P.A. EASEMENT)

03-043-C
(LOWER DRY CREEK ROAD)

SEE SURVEYS 06-206-C, 08-007-B, 08-161-B, 08-164-B,
09-016-C, 09-016-C, 09-043-C, 09-092-B, 10-154-C, 10-159-C
FOR OVERALL PARCEL BOUNDARIES AND BOUNDARY ADJUSTMENTS.

SEE PARTITION PLATS 2010-08, 2010-09, 2010-26, 2010-27,
2011-21, 2011-27, 2011-28, 2011-29, 2012-11, 2012-12, 2012-16,
2012-17, 2012-23, 2014-07

SURVEY NO. 199
OLD PRIVATE SURVEYS



Revised: 3/19/15

5N35B